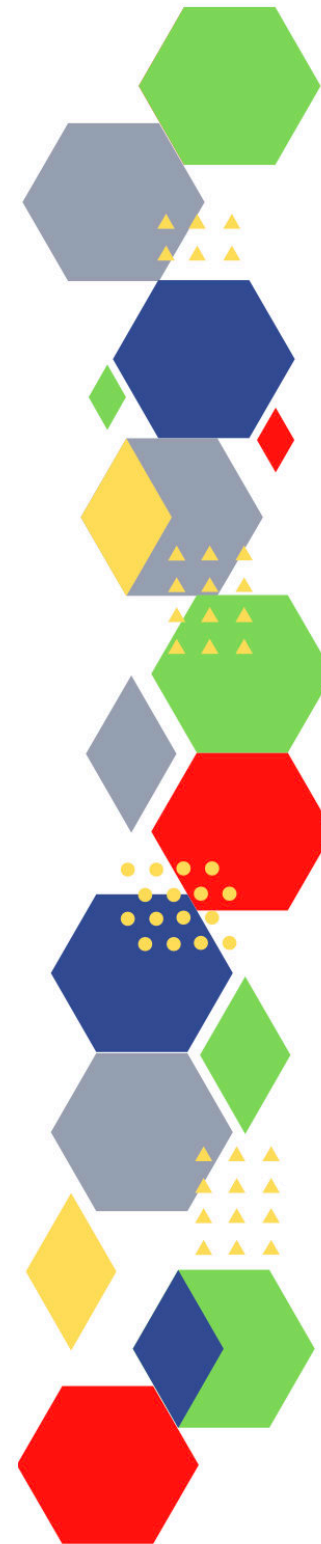


Future Proof Health Presents

Weekly News

26th August 2021



Communication	
Communication with Patients	
Communication within Teams	
People and Personal Development	
Personal / HR & People Development / Leadership	<ul style="list-style-type: none">• Job Vacancies• Accountability and delegation in practice

Health, Safety & Security

- [HSE Weekly Digest eBulletin](#)
- [NPSA](#)

CQC

Vaccines & Medications

- [Protocol for ordering, storing and handling vaccines](#)
- [Second SGLT2 inhibitor approved for heart failure](#)
- [SGLT2 inhibitor licensed to treat chronic kidney disease](#)

Drug / Device Alerts (MHRA)

- [Letters and medicine recalls sent to healthcare professionals in July 2021](#)
- [Irbesartan batches recalled over contamination](#)
- [COVID-19 vaccines: updates for August 2021](#)

Emergency Situations

- [The updated National Early Warning Score and its use with suspected Sepsis](#)
- [Resuscitation Council UK](#)

Infection Control

Safe Guarding

- [Female genital mutilation \(FGM\)](#)
- [PREVENT](#)
- [Child protection system in the UK](#)
- [Safeguarding Adults](#)
- [Safeguarding children: detailed information](#)

Practice Policies

Audit

Information Governance

- [Guide to Data Protection](#)

Quality & Service Improvement	
Quality & Service	<ul style="list-style-type: none"> • The PRSB • General Practice Assessment Questionnaire (GPAQ) • Healthwatch • NHS Five Year Forward View • General Practice Forward View • NMC • QOF QI hub
Improvement	
New Roles in General Practice	<ul style="list-style-type: none"> • Standards for nursing associates
Personal Practice & Development	<ul style="list-style-type: none"> • Building a culture of learning and accountability: learning from when things go wrong (virtual conference) • Anchor institutions: using resources and influence to reduce health inequalities (virtual conference) • Urgent and emergency care (virtual conference)
NHS Self Care & Resilience	
ICS / PCN	<ul style="list-style-type: none"> • Integrated care systems and place-based partnerships six months on (virtual conference)
Leadership	

Personalised Care	
Personalised Care / Self Care	<ul style="list-style-type: none"> • The National Academy for Social Prescribing • Self care forum • Personalised Care Institute • NHS Personalised care • Making some noise
Social Prescribing / Health Coaching	
Group consultation	Group consultations: Together, patients are stronger

Equality & Diversity	
Equality & Diversity	• Public Health Profiles
Inclusion Health	
Poverty / Homelessness	
Health Inequalities	• Ideas that change health and care
Migrant Health	• Model of oral healthcare for asylum seekers and refugees

Management of Emergency Situations	
Management of Emergency Situations	<ul style="list-style-type: none"> • The updated National Early Warning Score and its use with suspected Sepsis
Red Flags	
Sepsis	<ul style="list-style-type: none"> • Sepsis: recognition, diagnosis and early management • Sepsis guidance implementation advice for adults • Sepsis in Children • Sepsis Trust • RCGP: Sepsis
Therapeutic Monitoring	

Health & Well-Being	
Health & Well-Being	
Assessment	
Obtaining samples	<ul style="list-style-type: none"> • Becton Dickinson Blood Specimen Collection Portfolio supply disruption

Role Specific	
Cervical Cytology	<ul style="list-style-type: none"> • Cervical screening: support for people who feel anxious about attending • NHS Cervical Screening Programme - National Ceasing Audit
Ear Care	
Wound Management	<ul style="list-style-type: none"> • WOUNDEXPO2021
Minor Surgery	

Health Promotion / Health Screening	
Health Promotion / Population Health	
Health Screening	<ul style="list-style-type: none"> • NHS chief urges people to come forward for life saving cancer checks ahead of new campaign
PHE	<ul style="list-style-type: none"> • Knowledge & Library Services
NHS Health Check	<ul style="list-style-type: none"> • NHS Health Check
NOIDS	<ul style="list-style-type: none"> • Notifications of infectious diseases (NOIDs)
Addiction/Smoking	<ul style="list-style-type: none"> • Learning disability newsletter: Issue 13

Immunisation / Travel Health

- [Vaccinations and infections](#)
- [Joint Committee on Vaccination and Immunisation](#)
- [Immunisation against infectious disease](#)
- [West Midlands Immunisation Service](#)
- [Immunisation information for Health Care Services within the West Midlands area](#)

Flu

Children

- [COVID-19 vaccination programme Vaccinating children and young people: frequently asked questions](#)
- [Greenbook chapter 2 consent](#)

Adults

- [Immunisation patient group direction \(PGD\) templates](#)
- [Shingles immunisation programme: introduction of Shingrix® letter](#)

Vaccine Update

- [Vaccine update](#)

Travel Health

- [Travel Health Pro](#)
- [Fit for Travel](#)
- [Travel Health](#)
- [Jane Chiodini](#)

Covid Vaccine

- [COVID-19 vaccination programme: actions for all practices to support vaccinating eligible 12-15 year olds](#)
- [COVID-19 vaccination: resources for children and young people](#)
- [All young people aged 16 and 17 in England to be offered vaccine by next week](#)
- [National protocol for COVID-19 mRNA vaccine BNT162b2 \(Pfizer/BioNTech\)](#)
- [COVID-19 vaccination: information for healthcare practitioners](#)
- [Use of lateral flow devices for asymptomatic staff testing at vaccination sites](#)

Mental Health / Learning Disability / Disability	
Mental Health	<ul style="list-style-type: none"> • Mental Health • Mental Health UK • Mind • Place2b • Rethink Mental Illness • Young Minds • Free Members' Webinar: The mental health digital playbook webinar • Covid-19 Loneliness Fund
Learning Disability	<ul style="list-style-type: none"> • Learning Disabilities • Learning Disability England • Mencap • Bild • Autism • Learning disability newsletter: Issue 13
Disability	<ul style="list-style-type: none"> • Disability Rights UK • Disability Matters

Family Planning & Sexual Health	
Family Planning	
Reproductive	<ul style="list-style-type: none"> • Tommys
Sexual Health	

From Cradle to...

Infant Health	<ul style="list-style-type: none"> • Tommys • First Steps Nutrition Trust • Bliss
Child Health	<ul style="list-style-type: none"> • Unicef • Health Professional Academy • Premature Babies • Child and Maternal Health • Women and Child First • Child Health Information Services • Place2b • Childhood eczema • Gastro-oesophageal reflux disease (GORD) in infancy • CAMHS Information • The health effects of universal early childhood interventions: evidence from Sure Start
Adolescent Health	<ul style="list-style-type: none"> • Adolescent Health Programme • Society for Adolescent Health and Medicine • Young Minds
Mens Health	<ul style="list-style-type: none"> • Prostate Cancer UK Newsletter • 'Routine' Use of Focal Therapy for Prostate Cancer in Next 5 Years

Women's Health	<ul style="list-style-type: none"> • Well Spring • HRT and menopause in the 21st century • NICE publishes final guideline advising on care throughout a woman's pregnancy
Trans / Non-binary Health / LGBTQ+	<ul style="list-style-type: none"> • Pride in the NHS Week and NHS Virtual Pride
The Older Population	<ul style="list-style-type: none"> • BGS • 'Ambitions for change' - Report on improving healthcare in care homes launched • COVID-19: wider impacts on people aged 65 and over
Carers	<ul style="list-style-type: none"> • Enhanced Health in Care Homes: primary care networks and community health
Complex Needs	

Care of Patients with Long Term Conditions	
LTC	
Diabetes & Pre-Diabetes	<ul style="list-style-type: none"> • AZ Medical and Educational Goods and Services in Diabetes
Respiratory	<ul style="list-style-type: none"> • Spirometry: step by step • ARTP • British Lung Foundation • The Primary Care Respiratory Society
COPD	<ul style="list-style-type: none"> • Right Breathe
Asthma	<ul style="list-style-type: none"> • FeNO - Fractional exhaled nitric oxide - for the diagnosis and management of Asthma • Asthma UK • Asthma: diagnosis, monitoring and chronic asthma management • GINA 2021: the missing pieces in the childhood asthma puzzle • GINA: Interim Guidance About COVID-19 & Asthma

Continuation of Long Term Conditions

Hypertension	<ul style="list-style-type: none"> • British Heart Foundation • Blood Pressure UK • Hypertension in adults: diagnosis and management • Hypertension in adults: diagnosis and treatment • Irbesartan batches recalled over contamination
CVD/AF	<ul style="list-style-type: none"> • QRISK®3-2018 risk calculator • Charity warns heart surgery waiting times could rise more than 40% by next spring without new funding • Heart Rhythm Alliance • CVD risk assessment and management • Health matters: preventing cardiovascular disease
Heart Failure	<ul style="list-style-type: none"> • British Heart Foundation • Second SGLT2 inhibitor approved for heart failure
Cancer / Oncology	<ul style="list-style-type: none"> • Surviving Thyroid Cancer • Help Us Help You - Lung Cancer Symptoms • NHS chief urges people to come forward for life saving cancer checks ahead of new campaign
Chronic Kidney Disease	<ul style="list-style-type: none"> • SGLT2 inhibitor licensed to treat chronic kidney disease

Continuation of Long Term Conditions

Liver Disease	<ul style="list-style-type: none"> • British Liver Trust
Neurological Conditions	<ul style="list-style-type: none"> • The Brain Tumour Charity
Musculoskeletal Conditions	<ul style="list-style-type: none"> • Rheumatology • National Axial Spondyloarthritis Society • Hip OA: What's the Best First Option?
Blood Disorders	<ul style="list-style-type: none"> • Blood Cancer • Thalassaemia • ITP • Haemophilia • UK MDS Forum • Save a life. Give plasma.
G.I	<ul style="list-style-type: none"> • PPI and glycaemic control
ENT	
G.U	

Continuation of Long Term Conditions

<p>Endocrine Disorders / Metabolic Disorders</p>	<ul style="list-style-type: none"> • Endocrinology • Turner Syndrome Support Society • Thyroid Eye Disease • British Thyroid Foundation • Thyroid UK • Pituitary • Addisons Disease • Parathyroid UK • The Royal Osteoporosis Society • Metabolic Support UK • Diagnosing and managing Addison's disease in primary care • Conn's syndrome
<p>Frailty</p>	<ul style="list-style-type: none"> • Recognising frailty • Identifying frailty • CLINICAL FRAILTY SCALE
<p>Dementia</p>	<ul style="list-style-type: none"> • Dementia UK • Understanding dementia • Artificial intelligence brain scan trial will help clinicians diagnose dementia in a day

Continuation of Long Term Conditions

Dermatology

- [British Association of Dermatologists](#)
- [Eczema](#)
- [The British Skin Foundation](#)
- [Acne vulgaris: management](#)
- [The Primary Care Dermatology Society](#)
- [Acne.org](#)
- [Allergy UK](#)
- [Urticaria](#)
- [Hives](#)
- [Sunburn](#)
- [Causes of cancer and reducing your risk](#)
- [What is Rosacea?](#)
- [Rosecea](#)
- [Herpes.org](#)
- [Shingles](#)
- [Fungal Skin Infection - Foot](#)
- [The Psoriasis Association](#)
- [Psoriasis](#)
- [Melanoma](#)
- [Skin Health Information](#)
- [British Association of Plastic Reconstructive and Aesthetic Surgeons](#)
- [Warts and verrucae](#)
- [2020 Primary Care Update: COVID-19 and the Skin](#)

Continuation of Long Term Conditions

Allergy / Auto-immune Conditions	<ul style="list-style-type: none"> • Allergy UK • Rheumatology • Addisons Disease • Cystinosis diagnosis and co-ordination of management
Obesity	<ul style="list-style-type: none"> • Obesity UK
Pain Management	<ul style="list-style-type: none"> • Pain Concern
Multi-Morbidity	<ul style="list-style-type: none"> • Multimorbidity • Multimorbidity / multiple long-term conditions (MLTC)
Minor Illness / First Contact	
Assessment	
Other	<ul style="list-style-type: none"> • Ultra Rare Disease Disorders And Disabilities Foundation • Urddad Foundation looks at Sepsis

End of Life Care	
End of Life Care	
Covid-19	
Covid-19	<ul style="list-style-type: none"> • Covid Live • COVID-19: wider impacts on people aged 65 and over • Doctors Facing Aggression From Patients Who Refuse to Wear Masks • Covid-19 Loneliness Fund • Updated PHE guidance on NHS staff and student self-isolation and return to work following COVID-19 contact • COVID-19: management of staff and exposed patients or residents in health and social care settings
Long Covid	<ul style="list-style-type: none"> • Supporting your recovery after COVID-19

News & Views

Digital News / Remote Consultations	<ul style="list-style-type: none"> • Digital Health News Webinars • Digital Health News • The Digital Health Autumn Leadership Summit • COVID-19 and the digital divide
PSNC News	<ul style="list-style-type: none"> • 20th August • 24th August
60 Second GP / Pulse / GP Online / HSJ	<ul style="list-style-type: none"> • 60 Second GP • GP Online • HSJ • Pulse Today
Primary Care Update / PCC	<ul style="list-style-type: none"> • Primary Care Bulletin
Kings Fund	Weekly News / Health Management and Policy Alert / Health and Well Being Bulletin / Digital Health Digest / Events Update
World Health Organisation	<ul style="list-style-type: none"> • WHO
Midlands Academic Health Science Network	
Healthwatch	<ul style="list-style-type: none"> • Healthwatch
Black Country Bulletins	

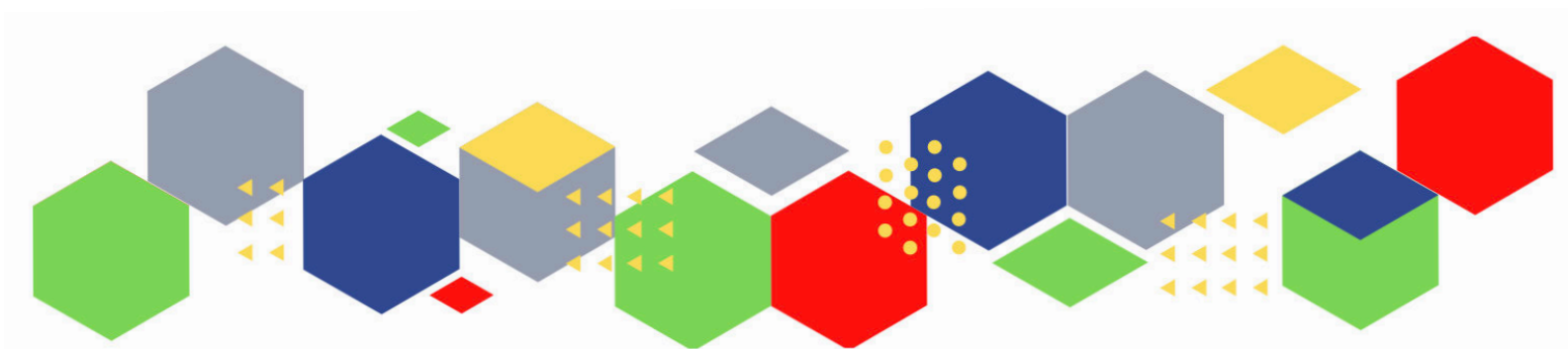
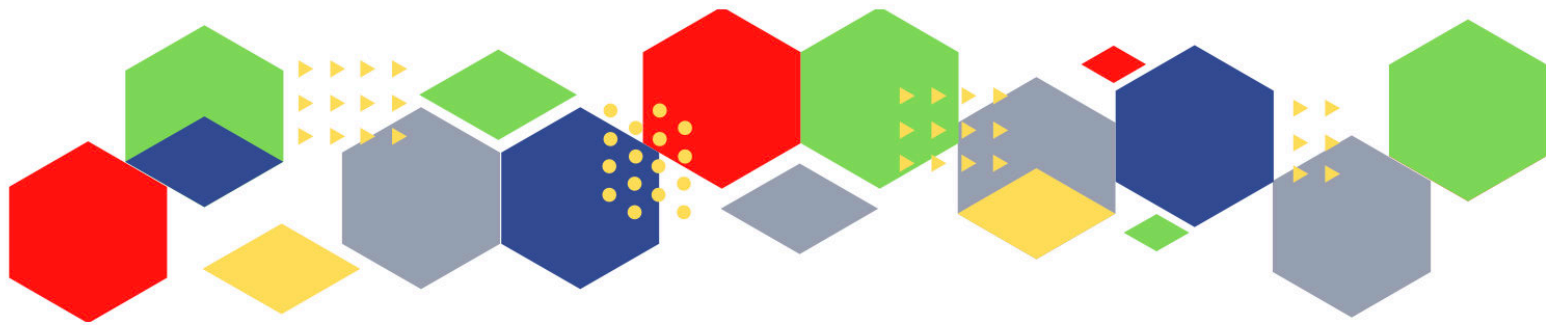
Continuation News & Views

IHCT / CCG / STP / Healthier Futures	<ul style="list-style-type: none"> • Healthier Futures • Black Country & West Birmingham CCG
University / Student Nurses	
Medisa / Univadis / Geeky Medics / GP Notebook / Medscape	<ul style="list-style-type: none"> • Univadis Newsletter • Medisa • Geeky Medics • NICE Embroiled in Fierce Debate Over Decision to Delay New Guidance for ME • Chloramphenicol eye drops containing borax or boric acid buffers (boron): use in children younger than 2 years
MIMS	<ul style="list-style-type: none"> • Latest MIMS news
The Health Foundation	
The Health Care Leaders Update	<ul style="list-style-type: none"> • Health Care Leader News
PHE	
Innovation Agency	<ul style="list-style-type: none"> • Innovation Agency Exchange
RCN	<ul style="list-style-type: none"> • RCN+ • RCN Events

Continuation News & Views

Nursing in Practice / Nursing Standard / Independent Nurse	<ul style="list-style-type: none"> • Nursing in Practice Clinical • Nursing in Practice Bulletin • Practice Nursing Newsletter • Independent News • GPN Bulletin
QNI	<ul style="list-style-type: none"> • QNI • Year of the Nurse and the Midwife Celebrated in New Animation • The QNI International Recruitment Event Password: QNIinternational21
NMC	<ul style="list-style-type: none"> • NMC
CNO	<ul style="list-style-type: none"> • Message from the Chief Medical Officer • CMO Update
Nice	<ul style="list-style-type: none"> • NICE • NICE publishes final guideline advising on care throughout a woman's pregnancy
RCGP / BMA / The Lancet	<ul style="list-style-type: none"> • The Lancet • British Medical Journal • Royal College of General Practitioners • QOF QI hub
Midlands Academic Health Science Network	<ul style="list-style-type: none"> • WMAHSN Network

Free Training / Webinars / Meetings / CPD	
Development / Information and Knowledge	<ul style="list-style-type: none"> • RCN Events - West Midlands • MIMS Learning Live • THE BEST PRACTICE SHOW – 13-14 October 2021 • FREE Cancer Screening Webinar • Wound Expo • QOF QI - implementation of the 'early cancer diagnosis' module • Continual Professional Development • Virtual Conference 2021
BCWB Training Hub	<ul style="list-style-type: none"> • Black Country and West Birmingham Training Hub
Research	<ul style="list-style-type: none"> • Science Daily • UKRI councils are moving to ukri.uk
Freebies	<ul style="list-style-type: none"> • Blue Light Card



Thank you for reading Future Proof Health's weekly news!
If you missed past issues, please click [here](#) to view them

More information can be found on our website, [here](#)

Don't forget to like us on [Facebook](#) & Follow us on [Twitter](#)