

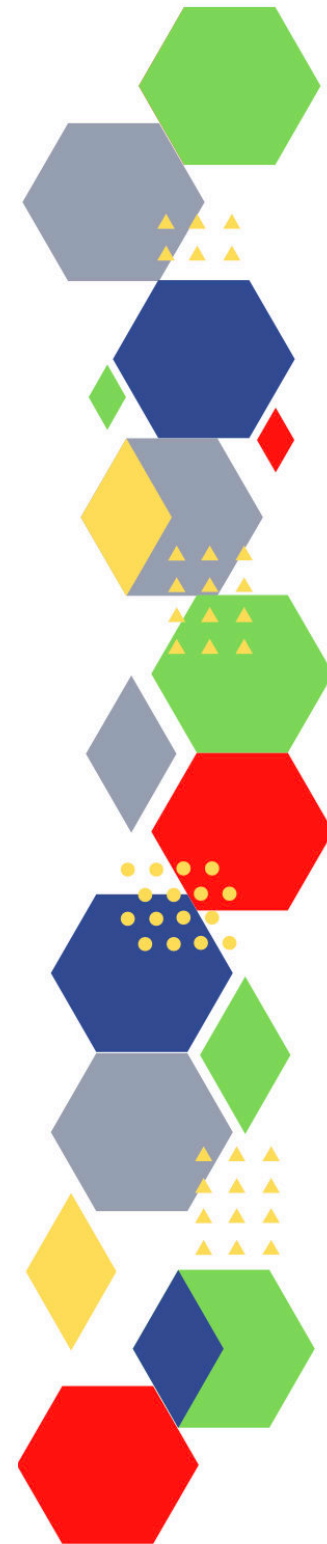
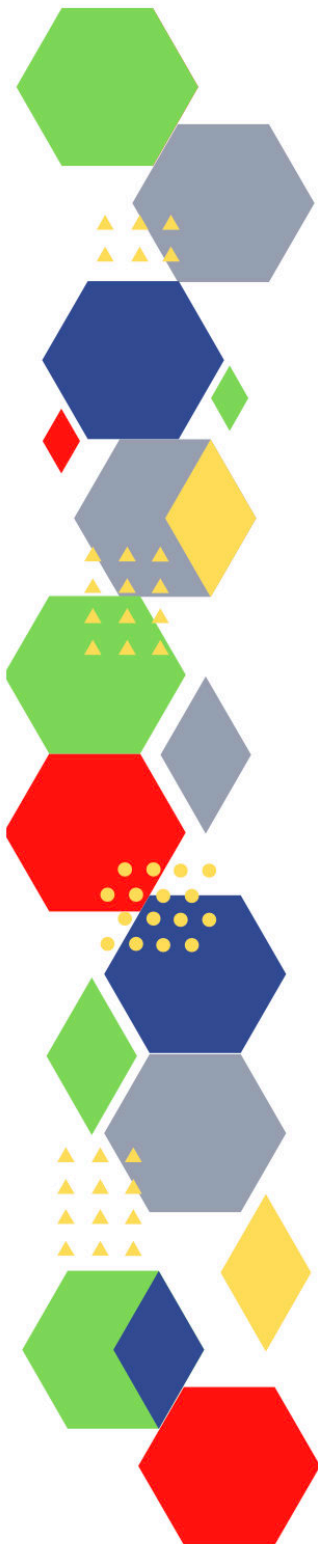


FutureProof**Health**  
Delivering tomorrow's healthcare

Future Proof Health Presents

Weekly News

18th March 2022



Communication	
Communication with Patients	
Communication within Teams	
Consent	<ul style="list-style-type: none"> <li>• <a href="#">Gillick competency and Fraser guidelines</a></li> <li>• <a href="#">CONSENT POLICY</a></li> <li>• <a href="#">ReSPECT for healthcare professionals</a></li> </ul>
People and Personal Development	
Personal / People Development / Leadership	<ul style="list-style-type: none"> <li>• <a href="#">Accountability and delegation in practice</a></li> <li>• <a href="#">What is compassionate leadership?</a></li> </ul>
NHS Employers / HR / NHS Pension	<ul style="list-style-type: none"> <li>• <a href="#">NHS Employers</a></li> <li>• <a href="#">Pensions Online</a></li> </ul>
Health, Safety & Security	
	<ul style="list-style-type: none"> <li>• <a href="#">NPSA</a></li> <li>• <a href="#">Control of Substances Hazardous to Health (COSHH)</a></li> <li>• <a href="#">HSE Weekly Digest eBulletin</a></li> </ul>
Gov UK - NHS	
CQC	<ul style="list-style-type: none"> <li>• <a href="#">GP mythbusters</a></li> <li>• <a href="#">Examples of outstanding practice for GPs</a></li> <li>• <a href="#">New Regulatory Model webinar</a></li> <li>• <a href="#">CQC update for adult social care providers</a></li> <li>• <a href="#">GP mythbuster 106: Primary care first contact practitioners (FCPs)</a></li> <li>• <a href="#">What is a location?</a></li> <li>• <a href="#">Update to CQC's regulatory approach: changes from 1 February</a></li> </ul>

Vaccines / Medications / Prescribing	<ul style="list-style-type: none"> <li>• <a href="#">Protocol for ordering, storing and handling vaccines</a></li> <li>• <a href="#">A Competency Framework for all Prescribers</a></li> <li>• <a href="#">Non-medical prescribing</a></li> <li>• <a href="#">The Human Medicines Regulations 2012</a></li> <li>• <a href="#">RCN - Non-medical prescribers</a></li> <li>• <a href="#">Royal Pharmaceutical Society</a></li> <li>• <a href="#">Standards for prescribing</a></li> <li>• <a href="#">Clinical Negligence Scheme for General Practice</a></li> <li>• <a href="#">Hydroxychloroquine or chloroquine, in combination with macrolide antibiotics: review of epidemiological data for cardiovascular safety</a></li> </ul>
MIMS	<ul style="list-style-type: none"> <li>• <a href="#">Prescribing Update</a></li> </ul>
Antibiotic steward-ship / Anti-microbial resistance	
Drug / Device Alerts (MHRA)	
Emergency Situations	<ul style="list-style-type: none"> <li>• <a href="#">The updated National Early Warning Score and its use with suspected Sepsis</a></li> <li>• <a href="#">Resuscitation Council UK</a></li> </ul>
Infection Control / Infection Statics	
Safe Guarding	<ul style="list-style-type: none"> <li>• <a href="#">Female genital mutilation (FGM)</a></li> <li>• <a href="#">PREVENT</a></li> <li>• <a href="#">Child protection system in the UK</a></li> <li>• <a href="#">Safeguarding Adults</a></li> <li>• <a href="#">Safeguarding children: detailed information</a></li> <li>• <a href="#">Safeguarding children needs proper resources</a></li> <li>• <a href="#">Identifying and responding to sexual assault and abuse – a reminder of our responsibilities and how the NHS is addressing this</a></li> <li>• <a href="#">Key Messages from Walsall Safeguarding Partnership</a></li> </ul>
Practice Policies	<ul style="list-style-type: none"> <li>• <a href="#">Reimbursable vaccines and eligible cohorts for the 2022/23 NHS Seasonal Influenza (flu) Vaccination Programme</a></li> </ul>
Audit	
Information Governance / Record Keeping	<ul style="list-style-type: none"> <li>• <a href="#">Guide to Data Protection</a></li> <li>• <a href="#">Supporting general practice – Medical record keeping</a></li> <li>• <a href="#">Smoothing the way to confidentiality support</a></li> </ul>

Quality & Service Improvement	
Quality, Service & Improvement	<ul style="list-style-type: none"> <li>• <a href="#">The PRSB</a></li> <li>• <a href="#">General Practice Assessment Questionnaire (GPAQ)</a></li> <li>• <a href="#">Healthwatch</a></li> <li>• <a href="#">NHS Five Year Forward View</a></li> <li>• <a href="#">General Practice Forward View</a></li> <li>• <a href="#">NMC</a></li> <li>• <a href="#">Dr Jon Griffiths</a></li> <li>• <a href="#">NHS Confed</a></li> </ul>
Roles in General Practice	<ul style="list-style-type: none"> <li>• <a href="#">Standards for nursing associates</a></li> <li>• <a href="#">GP mythbuster 57: Health Care Assistants in General Practice</a></li> <li>• <a href="#">Regulation 4: Requirements where the service provider is an individual or partnership</a></li> </ul>
Revalidation	
Personal Practice & Development	<ul style="list-style-type: none"> <li>• <a href="#">Leading the Way: The role and value of nurses in general practice</a></li> </ul>
Practice Management	<ul style="list-style-type: none"> <li>• <a href="#">Institute of General Practice Management</a></li> <li>• <a href="#">Practice Index</a></li> <li>• <a href="#">GP Practice Managers' Forum</a></li> </ul>
NHS Self Care & Resilience	<ul style="list-style-type: none"> <li>• <a href="#">Samaritans</a></li> <li>• <a href="#">Mental Health at work</a></li> <li>• <a href="#">Calm</a></li> <li>• <a href="#">Supporting our NHS people</a></li> </ul>
Practice Transformation	<ul style="list-style-type: none"> <li>• <a href="#">Roadmaps to Practice</a></li> </ul>
Future of NHS / General Practice	<ul style="list-style-type: none"> <li>• <a href="#">Public perceptions of the NHS and social care: performance, policy and expectations</a></li> <li>• <a href="#">NHS Discharge Forum 2022</a></li> <li>• <a href="#">NHS England » GP Contract</a></li> <li>• <a href="#">NHS Long Term Plan » Online version of the NHS Long Term Plan</a></li> <li>• <a href="#">Young people are the future: how can recruiters encourage more of them to join the NHS workforce?</a></li> <li>• <a href="#">My Planned Care NHS</a></li> <li>• <a href="#">Coronavirus » Delivery plan for tackling the COVID-19 backlog of elective care</a></li> </ul>
ICS / PCN	<ul style="list-style-type: none"> <li>• <a href="#">Recommendations for Integrated Care Systems</a></li> </ul>

QOF / PHOF / DES / LES	<ul style="list-style-type: none"> <li>• <a href="#">NHS England » Network Contract DES</a></li> <li>• <a href="#">NHS England » Update on Quality Outcomes Framework changes for 2021/22</a></li> <li>• <a href="#">NHS England » 2022/23 NHS Standard Contract</a></li> <li>• <a href="#">Onboarding for Primary Care Providers</a></li> </ul>
Leadership	<ul style="list-style-type: none"> <li>• <a href="#">Leadership Academy</a></li> <li>• <a href="#">Regulation 5: Fit and proper persons: directors</a></li> <li>• <a href="#">What is compassionate leadership?</a></li> <li>• <a href="#">Regulation 6: Requirement where the service provider is a body other than a partnership</a></li> </ul>
Personalised Care	
Personalised Care / Self Care / Social Prescribing / Health Coaching	<ul style="list-style-type: none"> <li>• <a href="#">Self Care forum</a></li> <li>• <a href="#">Personalised Care Institute</a></li> <li>• <a href="#">Personalised care</a></li> <li>• <a href="#">Social Prescribing Academy</a></li> <li>• <a href="#">Regulation 9: Person-centred care</a></li> </ul>
Group consultation	
Working Differently	
Shared Decision Making	<ul style="list-style-type: none"> <li>• <a href="#">Shared Decision Making survey</a></li> </ul>
Equality & Diversity	
Equality & Diversity	<ul style="list-style-type: none"> <li>• <a href="#">Public Health Profiles</a></li> </ul>
Inclusion Health	<ul style="list-style-type: none"> <li>• <a href="#">Health Creation Academic Network</a></li> </ul>
Poverty / Homelessness	<ul style="list-style-type: none"> <li>• <a href="#">Crisis</a></li> <li>• <a href="#">This is Poverty</a></li> </ul>
Population Health	
Thrive Into Work	<ul style="list-style-type: none"> <li>• <a href="#">Thrive into Work</a></li> <li>• <a href="#">Thrive into Work Referral form</a></li> </ul>

Health Inequalities	<ul style="list-style-type: none"> <li>• <a href="#">Royal College of Nursing responds to NHS Race and Health Observatory report on ethnic health inequalities</a></li> </ul>
Trans / Non-binary Health / LGBTQ+	<ul style="list-style-type: none"> <li>• <a href="#">LGBT Foundation</a></li> <li>• <a href="#">NHS population screening: information for trans and non-binary people</a></li> <li>• <a href="#">Cervical screening for trans men and/or non-binary people</a></li> <li>• <a href="#">DOMESTIC ABUSE BOARD AND SEXUAL ASSAULT AND ABUSE BOARD</a></li> <li>• <a href="#">BMA Mail</a></li> </ul>
Migrant / Refugee Health	<ul style="list-style-type: none"> <li>• <a href="#">THE REFUGEE &amp; MIGRANT CENTRE</a></li> <li>• <a href="#">Getting support for migration issues</a></li> </ul>
Traveller / Gypsy / Romany Health	
Veterans Health	<ul style="list-style-type: none"> <li>• <a href="#">The first call for help takes courage</a></li> </ul>
Management of Emergency Situations	
Management of Emergency Situations	<ul style="list-style-type: none"> <li>• <a href="#">The updated National Early Warning Score and its use with suspected Sepsis</a></li> </ul>
111	
Red Flags	<ul style="list-style-type: none"> <li>• <a href="#">Supporting general practice – Common pitfalls</a></li> </ul>
Sepsis	<ul style="list-style-type: none"> <li>• <a href="#">Sepsis: recognition, diagnosis and early management</a></li> <li>• <a href="#">Sepsis guidance implementation advice for adults</a></li> <li>• <a href="#">Sepsis in Children</a></li> <li>• <a href="#">Sepsis Trust</a></li> <li>• <a href="#">RCGP: Sepsis</a></li> <li>• <a href="#">quick SEPSIS RELATED ORGAN FAILURE ASSESSMENT</a></li> </ul>
Therapeutic Monitoring	
OSCE	<ul style="list-style-type: none"> <li>• <a href="#">Geeky Medics</a></li> <li>• <a href="#">Abdominal Examination - Demonstration - YouTube</a></li> <li>• <a href="#">Cardiovascular Examination - Demonstration - YouTube</a></li> <li>• <a href="#">Respiratory Examination - Demonstration - YouTube</a></li> <li>• <a href="#">Physical Diagnosis Skills - University of Washington School of Medicine</a></li> </ul>

Role Specific	
Cervical Cytology	<ul style="list-style-type: none"> <li>• <a href="#">Guide to the interim assessment</a></li> <li>• <a href="#">British Association for Cytopathology</a></li> <li>• <a href="#">Lab Tests Online</a></li> </ul>
Ear Care	<ul style="list-style-type: none"> <li>• <a href="#">Ear Care Centre</a></li> <li>• <a href="#">RNID</a></li> <li>• <a href="#">The health and social care approach to winter</a></li> </ul>
Wound Management	<ul style="list-style-type: none"> <li>• <a href="#">Microworld</a></li> <li>• <a href="#">Tissue Viability Society</a></li> <li>• <a href="#">Best Practice, Leadership, Support</a></li> <li>• <a href="#">A JWC Masterclass on Bovine Dermal Scaffolds</a></li> </ul>
Minor Surgery	
Obtaining Samples / Results	<ul style="list-style-type: none"> <li>• <a href="#">Lab Tests Online</a></li> </ul>
Health Promotion / Health Screening	
Health Promotion / Population Health	<ul style="list-style-type: none"> <li>• <a href="#">Better Health</a></li> <li>• <a href="#">EXi App</a></li> <li>• <a href="#">Child and Maternal Health - Data - OHID - Dudley</a></li> <li>• <a href="#">Child and Maternal Health - Data - OHID - Sandwell</a></li> <li>• <a href="#">Child and Maternal Health - Data - OHID - Walsall</a></li> <li>• <a href="#">Child and Maternal Health - Data - OHID - Wolverhampton</a></li> </ul>
Health Screening	<ul style="list-style-type: none"> <li>• <a href="#">PHE Screening</a></li> <li>• <a href="#">Learning Disability Annual Health Checks PCN Local Incentive Scheme 2021/22</a></li> </ul>
PHE/OHID	<ul style="list-style-type: none"> <li>• <a href="#">Knowledge &amp; Library Services</a></li> <li>• <a href="#">Campaign Resources</a></li> <li>• <a href="#">Public Health Profiles</a></li> <li>• <a href="#">Health Publications</a></li> <li>• <a href="#">Health Profile for England 2021</a></li> </ul>
NHS Health Check	<ul style="list-style-type: none"> <li>• <a href="#">NHS Health Check</a></li> </ul>

NOIDS / PHE Surveillance / Syndromic Surveillance	<ul style="list-style-type: none"> <li>• <a href="#">Notifications of infectious diseases (NOIDs)</a></li> </ul>
Addiction/Smoking	<ul style="list-style-type: none"> <li>• <a href="#">Drink Coach</a></li> <li>• <a href="#">Stop smoking interventions and services</a></li> <li>• <a href="#">Overview   Tobacco: preventing uptake, promoting quitting and treating dependence</a></li> <li>• <a href="#">NHS England » NHS launches new gambling addiction clinics to meet record demand</a></li> <li>• <a href="#">NHS Smoking Cessation Service - Referral from Secondary Care into Community Pharmacy</a></li> <li>• <a href="#">Fast Five Quiz: Alcohol and Cancer</a></li> <li>• <a href="#">Addressing the leading risk factors for ill health</a></li> </ul>
Immunisation / Travel Health	
<ul style="list-style-type: none"> <li>• <a href="#">Vaccinations and infections</a></li> <li>• <a href="#">Joint Committee on Vaccination and Immunisation</a></li> <li>• <a href="#">Immunisation against infectious disease</a></li> <li>• <a href="#">West Midlands Immunisation Service</a></li> <li>• <a href="#">Immunisation information for Health Care Services within the West Midlands area</a></li> <li>• <a href="#">Vaccination of individuals with uncertain or incomplete immunisation status</a></li> <li>• <a href="#">WHO vaccine-preventable diseases: monitoring system. 2020 global summary</a></li> <li>• <a href="#">The Foundations of Immunization: What, Who, When and Why?</a></li> <li>• <a href="#">Winter Vaccination - Prime phase: Social Media content calendar and assets - 2021</a></li> <li>• <a href="#">Helping to tackle vaccine hesitancy</a></li> <li>• <a href="#">Shingles in adults: what the practice nurse needs to know</a></li> <li>• <a href="#">NHS England » Update on vaccination and immunisation changes for 2021/22</a></li> <li>• <a href="#">Complete routine immunisation schedule</a></li> <li>• <a href="#">New UKHSA laboratory will 'define future pandemic response' with pioneering COVID-19 vaccines and variants research</a></li> <li>• <a href="#">JCVI advises a spring COVID-19 vaccine dose for the most vulnerable</a></li> </ul>	
Flu	<ul style="list-style-type: none"> <li>• <a href="#">Flu and flu vaccinations</a></li> <li>• <a href="#">The national influenza immunisation programme 2021 to 2022</a></li> <li>• <a href="#">Flu vaccines for the 2021 to 2022 season poster</a></li> <li>• <a href="#">Appendix C: Flu vaccinator competency assessment tool</a></li> <li>• <a href="#">Healthcare assistants and flu vaccinations</a></li> <li>• <a href="#">Flu Campaign Resources 2021/22</a></li> <li>• <a href="#">National flu and COVID-19 surveillance reports published</a></li> </ul>



*Continuation of Immunisation / Travel Health*

Covid Vaccine	<ul style="list-style-type: none"> <li>• <a href="#">Greenbook COVID-19 chapter 14a</a></li> <li>• <a href="#">Updates made to the COVID-19 vaccination elearning programme</a></li> <li>• <a href="#">HEE e-LfH COVID-19 vaccination programme launches hit 2 million</a></li> <li>• <a href="#">COVID-19 Vaccine Moderna e-learning now available</a></li> <li>• <a href="#">GP COVID-19 vaccine dashboard</a></li> <li>• <a href="#">Coronavirus (COVID-19) vaccines adverse reactions</a></li> <li>• <a href="#">COVID-19 vaccination: resources for children and young people aged 12 to 17 years</a></li> <li>• <a href="#">The Covid-19 vaccination programme</a></li> <li>• <a href="#">JCVI updates advice on vaccinations for 5 to 11 age group</a></li> <li>• <a href="#">Coronavirus » Next steps for the NHS COVID-19 vaccination programme planning and delivery</a></li> <li>• <a href="#">Tell the NHS about coronavirus (COVID-19) vaccinations you've had abroad</a></li> </ul>
Children	<ul style="list-style-type: none"> <li>• <a href="#">What do I need to know about the MMR vaccine?</a></li> <li>• <a href="#">HPV immunisation programme: changes from April 2022 letter</a></li> </ul>
Adults	<ul style="list-style-type: none"> <li>• <a href="#">Immunisation patient group direction (PGD) templates</a></li> <li>• <a href="#">Shingles immunisation programme: introduction of Shingrix® letter</a></li> </ul>
Vaccine Update	<ul style="list-style-type: none"> <li>• <a href="#">Vaccine update</a></li> <li>• <a href="#">Vaccine Update Index</a></li> </ul>
PGD	
Travel Health	<ul style="list-style-type: none"> <li>• <a href="#">Travel Health Pro</a></li> <li>• <a href="#">Fit for Travel</a></li> <li>• <a href="#">Travel Health</a></li> <li>• <a href="#">Jane Chiodini</a></li> <li>• <a href="#">Corona.Help</a></li> </ul>

Mental Health / Learning Disability / Disability

<p>Mental Health</p>	<ul style="list-style-type: none"> <li>• <a href="#">Mental Health</a></li> <li>• <a href="#">Mental Health UK</a></li> <li>• <a href="#">Mind</a></li> <li>• <a href="#">Place2b</a></li> <li>• <a href="#">Rethink Mental Illness</a></li> <li>• <a href="#">Young Minds</a></li> <li>• <a href="#">Every Mind Matters</a></li> <li>• <a href="#">Calm</a></li> <li>• <a href="#">Headspace</a></li> <li>• <a href="#">We Can Talk</a></li> <li>• <a href="#">Get Your Mind Plan</a></li> <li>• <a href="#">Feeling low?</a></li> <li>• <a href="#">Better Health - Every Mind Matters - Resources</a></li> <li>• <a href="#">ZSA Training</a></li> <li>• <a href="#">Effects of the pandemic continue to add pressures on mental health services, worsening access to care and longstanding inequalities</a></li> <li>• <a href="#">NHS England » Widespread support for proposed NHS mental health access standards for patients</a></li> <li>• <a href="#">Monitoring the Mental Health Act in 2020/21</a></li> <li>• <a href="#">Running hot</a></li> <li>• <a href="#">Psychiatry - Medscape</a></li> </ul>
<p>Learning Disability</p>	<ul style="list-style-type: none"> <li>• <a href="#">Learning Disabilities</a></li> <li>• <a href="#">Learning Disability England</a></li> <li>• <a href="#">Mencap</a></li> <li>• <a href="#">Bild</a></li> <li>• <a href="#">Autism</a></li> <li>• <a href="#">Children and young people keyworkers</a></li> <li>• <a href="#">Easy read letter: health checks</a></li> <li>• <a href="#">Learning Disability Annual Health Checks PCN Local Incentive Scheme 2021/22</a></li> <li>• <a href="#">Stream Episode 34 - Supporting autistic people in primary care by NHS England and NHS Improvement</a></li> </ul>
<p>Disability</p>	<ul style="list-style-type: none"> <li>• <a href="#">Disability Rights UK</a></li> <li>• <a href="#">Disability Matters</a></li> </ul>

From Cradle to...

<p>Infant Health</p>	<ul style="list-style-type: none"> <li>• <a href="#">Tommys</a></li> <li>• <a href="#">First Steps Nutrition Trust</a></li> <li>• <a href="#">Bliss</a></li> <li>• <a href="#">NHS App - Baby Buddy</a></li> <li>• <a href="#">NHS App - Peanut</a></li> <li>• <a href="#">ICON Toolkit</a></li> <li>• <a href="#">Abbott recalls two infant formula powders because of the possible presence of Salmonella</a></li> </ul>
<p>Child Health</p>	<ul style="list-style-type: none"> <li>• <a href="#">Unicef</a></li> <li>• <a href="#">Health Professional Academy</a></li> <li>• <a href="#">Premature Babies</a></li> <li>• <a href="#">Child and Maternal Health</a></li> <li>• <a href="#">Women and Child First</a></li> <li>• <a href="#">Child Health Information Services</a></li> <li>• <a href="#">Place2b</a></li> <li>• <a href="#">Childhood eczema</a></li> <li>• <a href="#">Childhood asthma</a></li> <li>• <a href="#">Childrens Commissioner - The Big Answer</a></li> <li>• <a href="#">Suicide in Children and Young People</a></li> <li>• <a href="#">Under 16 Cancer Experience Survey</a></li> <li>• <a href="#">Babies, children and young people's experience of healthcare</a></li> <li>• <a href="#">Spotlight on the Early Years</a></li> <li>• <a href="#">First gene therapy for rare genetic neurodegenerative disorder in children, recommended in NICE draft guidance</a></li> <li>• <a href="#">Effects of the pandemic continue to add pressures on mental health services, worsening access to care and longstanding inequalities</a></li> <li>• <a href="#">Overview   Palforzia for treating peanut allergy in children and young people</a></li> <li>• <a href="#">Paediatrics Research &amp; Reports</a></li> </ul>
<p>Adolescent Health</p>	<ul style="list-style-type: none"> <li>• <a href="#">Adolescent Health Programme</a></li> <li>• <a href="#">Society for Adolescent Health and Medicine</a></li> <li>• <a href="#">Young Minds</a></li> <li>• <a href="#">NHS England » NHS treating record number of young people for eating disorders</a></li> </ul>

<p>Mens Health</p>	<ul style="list-style-type: none"> <li>• <a href="#">Mens Health Forum</a></li> <li>• <a href="#">Mens Health Month</a></li> <li>• <a href="#">Mens health.org</a></li> <li>• <a href="#">Mens Health UK</a></li> <li>• <a href="#">Men and mental health</a></li> <li>• <a href="#">Men's Mental Health Awareness</a></li> <li>• <a href="#">Prostate Cancer UK</a></li> <li>• <a href="#">Orchid Fighting Male Cancer</a></li> <li>• <a href="#">Prostate Cancer UK Facebook Page</a></li> <li>• <a href="#">Men's Voices Event</a></li> <li>• <a href="#">Movember</a></li> <li>• <a href="#">NHS England » Supporting male victims/survivors accessing a sexual assault referral centre: good practice guide</a></li> <li>• <a href="#">Risk campaign   Prostate Cancer UK</a></li> </ul>
<p>Women's Health</p>	<ul style="list-style-type: none"> <li>• <a href="#">Womens Health Concern</a></li> <li>• <a href="#">Well Being of Women</a></li> <li>• <a href="#">Coppa Feel</a></li> <li>• <a href="#">Menopause Matters</a></li> <li>• <a href="#">The Menopause Charity</a></li> <li>• <a href="#">Royal College of Obstetricians and Gynaecologists - Guidelines</a></li> <li>• <a href="#">Pelvic Partnership</a></li> <li>• <a href="#">CRUK - Womens Cancer</a></li> <li>• <a href="#">Breast Cancer Now</a></li> <li>• <a href="#">Foundation for Women's Cancer</a></li> <li>• <a href="#">Eve Appeal</a></li> <li>• <a href="#">Ovarian.Org</a></li> <li>• <a href="#">Jo's Trust</a></li> <li>• <a href="#">Well Spring</a></li> <li>• <a href="#">New test using cervical screening samples can detect risk of four cancers in women</a></li> <li>• <a href="#">Oral Metronidazole vs Intravaginal Lactic Acid Gel for Bacterial Vaginosis</a></li> <li>• <a href="#">Fast Five Quiz: Red Flags for Breast Cancer</a></li> </ul>
<p>The Older Population</p>	<ul style="list-style-type: none"> <li>• <a href="#">BGS</a></li> <li>• <a href="#">Ageing Better</a></li> </ul>

Carers / Social Care / Care Homes	<ul style="list-style-type: none"> <li>• <a href="#">The Care Provider Alliance</a></li> <li>• <a href="#">Skills for Care</a></li> <li>• <a href="#">The Care Workers' Charity</a></li> <li>• <a href="#">Supporting Adult Carers</a></li> <li>• <a href="#">Social care 360</a></li> </ul>
Young Carers	
Complex Needs	
Family Planning & Sexual Health	
Family Planning	<ul style="list-style-type: none"> <li>• <a href="#">Faculty of Sexual and Reproductive Healthcare Education and Training</a></li> </ul>
Reproductive	<ul style="list-style-type: none"> <li>• <a href="#">Tommys</a></li> </ul>
Sexual Health / Sexual Abuse	<ul style="list-style-type: none"> <li>• <a href="#">Sexual and Reproductive Health Profiles</a></li> <li>• <a href="#">FSRH Education &amp; Training</a></li> </ul>
Maternity / Neonate health	<ul style="list-style-type: none"> <li>• <a href="#">CPD module: Diabetes in pregnancy - the primary care role</a></li> </ul>
Care of Patients with Long Term Conditions	
LTC	<ul style="list-style-type: none"> <li>• <a href="#">Chronic Conditions On Demand</a></li> </ul>
Diabetes & Pre-Diabetes	<ul style="list-style-type: none"> <li>• <a href="#">AZ Medical and Educational Goods and Services in Diabetes</a></li> <li>• <a href="#">Mumoactive</a></li> <li>• <a href="#">The mySugr App</a></li> <li>• <a href="#">Foot Check</a></li> <li>• <a href="#">Overview   Type 2 diabetes in adults: management</a></li> <li>• <a href="#">Overview   d-Nav insulin management app for type 2 diabetes</a></li> <li>• <a href="#">NG28 Visual summary (full version: choosing medicines for first-line and further treatment)</a></li> <li>• <a href="#">NICE planning expansion of diabetes continuous blood glucose monitoring devices</a></li> </ul>
Respiratory	<ul style="list-style-type: none"> <li>• <a href="#">Spirometry: step by step</a></li> <li>• <a href="#">ARTP</a></li> <li>• <a href="#">British Lung Foundation</a></li> <li>• <a href="#">The Primary Care Respiratory Society</a></li> <li>• <a href="#">Greener Practice guide to inhaler prescribing</a></li> </ul>

*Continuation of Long Term Conditions*

COPD	<ul style="list-style-type: none"> <li>• <a href="#">Right Breathe</a></li> </ul>
Asthma	<ul style="list-style-type: none"> <li>• <a href="#">FeNO - Fractional exhaled nitric oxide - for the diagnosis and management of Asthma</a></li> <li>• <a href="#">Asthma UK</a></li> <li>• <a href="#">Asthma: diagnosis, monitoring and chronic asthma management</a></li> <li>• <a href="#">GINA 2021: the missing pieces in the childhood asthma puzzle</a></li> <li>• <a href="#">GINA: Interim Guidance About COVID-19 &amp; Asthma</a></li> <li>• <a href="#">Dupilumab for treating severe asthma with type 2 inflammation</a></li> </ul>
Hypertension	<ul style="list-style-type: none"> <li>• <a href="#">British Heart Foundation</a></li> <li>• <a href="#">Blood Pressure UK</a></li> <li>• <a href="#">Hypertension in adults: diagnosis and management</a></li> <li>• <a href="#">Hypertension in adults: diagnosis and treatment</a></li> </ul>
CVD/AF	<ul style="list-style-type: none"> <li>• <a href="#">QRISK®3-2018 risk calculator</a></li> <li>• <a href="#">Heart Rhythm Alliance</a></li> <li>• <a href="#">CVD risk assessment and management</a></li> <li>• <a href="#">Health matters: preventing cardiovascular disease</a></li> <li>• <a href="#">Benecol Healthcare Professional Newsletter</a></li> <li>• <a href="#">NHS Accelerated Access Collaborative » Lipid Management – Rapid Uptake Product</a></li> <li>• <a href="#">GPnotebook focus on cardiovascular medicine</a></li> </ul>
Heart Failure	<ul style="list-style-type: none"> <li>• <a href="#">British Heart Foundation</a></li> <li>• <a href="#">British Society Guidelines</a></li> </ul>
Cancer / Oncology	<ul style="list-style-type: none"> <li>• <a href="#">Surviving Thyroid Cancer</a></li> <li>• <a href="#">Help Us Help You - Lung Cancer Symptoms</a></li> <li>• <a href="#">Becca Breast Cancer Support App</a></li> <li>• <a href="#">Breast Cancer Now</a></li> <li>• <a href="#">MoleCare App</a></li> <li>• <a href="#">Macmillian</a></li> <li>• <a href="#">Aspirin and reduction of cancer risk</a></li> <li>• <a href="#">Macmillan Support Line Referrals</a></li> <li>• <a href="#">Oncology - Medscape</a></li> </ul>

<i>Continuation of Long Term Conditions</i>	
Cancer / Oncology Continued	<ul style="list-style-type: none"> <li>• <a href="#">Overview   EarlyCDT Lung for assessing risk of lung cancer in solid lung nodules</a></li> <li>• <a href="#">NICE recommends new diagnostic devices for men with suspected prostate cancer in draft guidance</a></li> <li>• <a href="#">Overview   Olaparib for treating BRCA mutation-positive HER2-negative metastatic breast cancer after chemotherapy (terminated appraisal)</a></li> <li>• <a href="#">Overview   Colorectal cancer   Quality standards</a></li> <li>• <a href="#">For healthcare professionals - Pancreatic Cancer UK</a></li> </ul>
Chronic Kidney Disease	<ul style="list-style-type: none"> <li>• <a href="#">Kidney.Org</a></li> <li>• <a href="#">Kidney Quality Improvement Partnership</a></li> </ul>
Liver Disease	<ul style="list-style-type: none"> <li>• <a href="#">British Liver Trust</a></li> <li>• <a href="#">Liver Research</a></li> <li>• <a href="#">BRITISH ASSOCIATION FOR THE STUDY OF THE LIVER</a></li> <li>• <a href="#">LIVERnORTH</a></li> <li>• <a href="#">LIVER DISEASE AND CIRRHOSIS</a></li> </ul>
Blood Disorders	<ul style="list-style-type: none"> <li>• <a href="#">Blood Cancer</a></li> <li>• <a href="#">Thalassaemia</a></li> <li>• <a href="#">ITP</a></li> <li>• <a href="#">Haemophilia</a></li> <li>• <a href="#">UK MDS Forum</a></li> <li>• <a href="#">Save a life. Give plasma.</a></li> <li>• <a href="#">Diagnosis and management of pernicious anaemia</a></li> </ul>
G.I	<ul style="list-style-type: none"> <li>• <a href="#">GIST Cancer UK</a></li> <li>• <a href="#">Overview   PredictSURE IBD and IBDX to guide treatment of Crohn's disease</a></li> </ul>
ENT	
G.U	
Neurological Conditions	<ul style="list-style-type: none"> <li>• <a href="#">The Brain Tumour Charity</a></li> <li>• <a href="#">Narcolepsy.Org</a></li> <li>• <a href="#">ACNR</a></li> <li>• <a href="#">Overview   Stereotactic radiosurgery for trigeminal neuralgia</a></li> <li>• <a href="#">Overview   Fremanezumab for preventing migraine</a></li> <li>• <a href="#">Parkinson Disease   Medscape</a></li> </ul>

*Continuation of Long Term Conditions*

Musculoskeletal Conditions	<ul style="list-style-type: none"> <li>• <a href="#">Rheumatology</a></li> <li>• <a href="#">National Axial Spondyloarthritis Society</a></li> <li>• <a href="#">Musculoskeletal health</a></li> <li>• <a href="#">Musculoskeletal health: 5 year prevention strategic framework</a></li> <li>• <a href="#">Faculty of Occupational Medicine</a></li> <li>• <a href="#">Overview   GaitSmart assessment and vGym personalised exercise rehabilitation programme for people with gait and mobility issues</a></li> <li>• <a href="#">Overview   AposHealth for knee osteoarthritis</a></li> <li>• <a href="#">Overview   Upadacitinib for treating active psoriatic arthritis after inadequate response to DMARDs</a></li> <li>• <a href="#">Rheumatology - Medscape</a></li> </ul>
Endocrine Disorders / Metabolic Disorders	<ul style="list-style-type: none"> <li>• <a href="#">Endocrinology</a></li> <li>• <a href="#">Turner Syndrome Support Society</a></li> <li>• <a href="#">Thyroid Eye Disease</a></li> <li>• <a href="#">British Thyroid Foundation</a></li> <li>• <a href="#">Thyroid UK</a></li> <li>• <a href="#">Pituitary</a></li> <li>• <a href="#">Addisons Disease</a></li> <li>• <a href="#">Parathyroid UK</a></li> <li>• <a href="#">The Royal Osteoporosis Society</a></li> <li>• <a href="#">Metabolic Support UK</a></li> </ul>
Frailty	<ul style="list-style-type: none"> <li>• <a href="#">Recognising frailty</a></li> <li>• <a href="#">Identifying frailty</a></li> <li>• <a href="#">CLINICAL FRAILTY SCALE</a></li> <li>• <a href="#">NHS England » Case study: supporting people living with frailty in Hull and East Riding</a></li> </ul>
Dementia	<ul style="list-style-type: none"> <li>• <a href="#">Dementia UK</a></li> <li>• <a href="#">Understanding dementia</a></li> <li>• <a href="#">My House of Memories - NHS App</a></li> <li>• <a href="#">Dementia profile updates</a></li> <li>• <a href="#">Caring for Carers Dementia Support Group (Tuesdays)</a></li> <li>• <a href="#">Delirium Champions</a></li> </ul>
Allergy / Auto-immune / Genetic Conditions	<ul style="list-style-type: none"> <li>• <a href="#">Allergy UK</a></li> <li>• <a href="#">Rheumatology</a></li> <li>• <a href="#">Addisons Disease</a></li> </ul>



*Continuation of Long Term Conditions*

Dermatology	<ul style="list-style-type: none"> <li>• <a href="#">British Association of Dermatologists</a></li> <li>• <a href="#">Eczema</a></li> <li>• <a href="#">The British Skin Foundation</a></li> <li>• <a href="#">Acne vulgaris: management</a></li> <li>• <a href="#">The Primary Care Dermatology Society</a></li> <li>• <a href="#">Acne.org</a></li> <li>• <a href="#">Allergy UK</a></li> <li>• <a href="#">Urticaria</a></li> <li>• <a href="#">Hives</a></li> <li>• <a href="#">Sunburn</a></li> <li>• <a href="#">Causes of cancer and reducing your risk</a></li> <li>• <a href="#">What is Rosacea?</a></li> <li>• <a href="#">Rosecea</a></li> <li>• <a href="#">Herpes.org</a></li> <li>• <a href="#">Shingles</a></li> <li>• <a href="#">Fungal Skin Infection - Foot</a></li> <li>• <a href="#">The Psoriasis Association</a></li> <li>• <a href="#">Psoriasis</a></li> <li>• <a href="#">Melanoma</a></li> <li>• <a href="#">Skin Health Information</a></li> <li>• <a href="#">British Association of Plastic Reconstructive and Aesthetic Surgeons</a></li> <li>• <a href="#">Warts and verrucae</a></li> </ul>
Obesity	<ul style="list-style-type: none"> <li>• <a href="#">Obesity UK</a></li> <li>• <a href="#">Obesity &amp; Nutrition News &amp; Advice</a></li> <li>• <a href="#">Obesity - the last acceptable stigma?</a></li> <li>• <a href="#">Overview   Preventing excess weight gain</a></li> <li>• <a href="#">Obesity: identification, assessment and management</a></li> <li>• <a href="#">Overview   Obesity: identification, assessment and management</a></li> <li>• <a href="#">Overview   Physical activity: brief advice for adults in primary care</a></li> <li>• <a href="#">NICE recommends new drug for people living with obesity</a></li> </ul>
Pain Management	<ul style="list-style-type: none"> <li>• <a href="#">Pain Concern</a></li> <li>• <a href="#">UK career framework for pain nurses</a></li> </ul>
Genomics	

<i>Continuation of Long Term Conditions</i>	
Multi-Morbidity	<ul style="list-style-type: none"> <li>• <a href="#">Multimorbidity</a></li> <li>• <a href="#">Multimorbidity / multiple long-term conditions (MLTC)</a></li> </ul>
Minor Illness / First Contact Assessment	
Other / Case Studies	<ul style="list-style-type: none"> <li>• <a href="#">Ultra Rare Disease Disorders And Disabilities Foundation</a></li> <li>• <a href="#">MyCognition Home - NHS App</a></li> <li>• <a href="#">The Cold Weather Plan for England</a></li> </ul>
<i>End of Life Care</i>	
End of Life Care	<ul style="list-style-type: none"> <li>• <a href="#">ReSPECT for healthcare professionals</a></li> <li>• <a href="#">Hospice UK</a></li> </ul>
<i>Covid-19</i>	
Covid-19	<ul style="list-style-type: none"> <li>• <a href="#">Covid Live</a></li> <li>• <a href="#">Coronavirus Statistics</a></li> </ul>
Long Covid	<ul style="list-style-type: none"> <li>• <a href="#">Supporting your recovery after COVID-19</a></li> <li>• <a href="#">Long Covid Toolkit</a></li> <li>• <a href="#">Long term effects of COVID (Long COVID)</a></li> <li>• <a href="#">Post-COVID Syndrome (Long COVID)</a></li> <li>• <a href="#">COVID-19 Yorkshire Rehabilitation Screening Tool</a></li> <li>• <a href="#">FOM Guidance</a></li> <li>• <a href="#">Supporting colleagues affected by Long COVID</a></li> <li>• <a href="#">Coronavirus » Living with COVID-19 white paper</a></li> <li>• <a href="#">Prime Minister sets out plan for living with COVID</a></li> <li>• <a href="#">IPC face covering resources for NHS settings</a></li> </ul>
Covid Response / Recovery	

News & Views

<p>Digital News / Remote Consultations</p>	<ul style="list-style-type: none"> <li>• <a href="#">Digital Health News Webinars</a></li> <li>• <a href="#">Digital Health News</a></li> <li>• <a href="#">NHS Digital</a></li> <li>• <a href="#">The Evidence Standards Framework for digital health technologies by NICE Talks</a></li> <li>• <a href="#">Introducing some of our expert speakers at The Digital Healthcare Show</a></li> <li>• <a href="#">Using digital technology to transform care pathways</a></li> <li>• <a href="#">NHS England » NHS Diabetes Prevention Programme</a></li> <li>• <a href="#">Diabetes UK – Know Your Risk of Type 2 diabetes</a></li> <li>• <a href="#">Obesity &amp; Nutrition News &amp; Advice</a></li> </ul>
<p>PSNC News / Pharmacy</p>	<ul style="list-style-type: none"> <li>• <a href="#">National Pharmacy Association</a></li> <li>• <a href="#">Royal Pharmaceutical Society</a></li> <li>• <a href="#">PSNC Concessions Announcement</a></li> <li>• <a href="#">11th March</a></li> <li>• <a href="#">14th March</a></li> <li>• <a href="#">16th March</a></li> <li>• <a href="#">NHS Smoking Cessation Service - Referral from Secondary Care into Community Pharmacy</a></li> </ul>
<p>60 Second GP / Pulse / GP Online / HSJ / NB Medical</p>	<ul style="list-style-type: none"> <li>• <a href="#">60 Second GP</a></li> <li>• <a href="#">GP Online</a></li> <li>• <a href="#">HSJ</a></li> <li>• <a href="#">Pulse Today</a></li> </ul>
<p>Primary Care Update / PCC / PPP</p>	<ul style="list-style-type: none"> <li>• <a href="#">Primary Care Bulletin</a></li> <li>• <a href="#">Public Policy Projects News</a></li> </ul>
<p>Practice Index</p>	<ul style="list-style-type: none"> <li>• <a href="#">Practice Index Weekly</a></li> </ul>
<p>Kings Fund</p>	<ul style="list-style-type: none"> <li>• <a href="#">The Kings Fund</a></li> <li>• <a href="#">Weekly News</a> / <a href="#">Health Management and Policy Alert</a> / <a href="#">Health and Well Being Bulletin</a> / <a href="#">Digital Health Digest</a></li> <li>• <a href="#">Ideas that change health and care</a></li> </ul>
<p>IHCT / CCG / STP / Healthier Futures</p>	<ul style="list-style-type: none"> <li>• <a href="#">Healthier Futures</a></li> <li>• <a href="#">Black Country &amp; West Birmingham CCG</a></li> <li>• <a href="#">Dudley Integrated Health and Care</a></li> </ul>

<i>Continuation News &amp; Views</i>	
NHSI / NHSE	
University / Student Nurses	
Medisa / Univadis / Geeky Medics / GP Notebook / Medscape	<ul style="list-style-type: none"> <li>• <a href="#">Univadis Newsletter</a></li> <li>• <a href="#">Univadis Nurses Headlines</a></li> <li>• <a href="#">Medisa</a></li> <li>• <a href="#">Geeky Medics</a></li> <li>• <a href="#">Medscape Nurses</a></li> <li>• <a href="#">GP Notebook</a></li> <li>• <a href="#">Latest UK Medical News &amp; NHS Guidelines - Medscape UK</a></li> </ul>
The Health Foundation	<ul style="list-style-type: none"> <li>• <a href="#">The Health Foundation</a></li> <li>• <a href="#">Government policies addressing the leading risk factors for ill health</a></li> </ul>
The Health Care Leaders Update	<ul style="list-style-type: none"> <li>• <a href="#">Health Care Leader News</a></li> </ul>
Innovation Agency	<ul style="list-style-type: none"> <li>• <a href="#">Innovation Agency Exchange</a></li> </ul>
RCN	<ul style="list-style-type: none"> <li>• <a href="#">RCN</a></li> <li>• <a href="#">Axing self-isolation and free testing 'foolish and irresponsible', say nurses</a></li> </ul>

*Continuation News & Views*

Nursing in Practice / Nursing Standard / Independent Nurse	<ul style="list-style-type: none"> <li>• <a href="#">Nursing Times</a></li> <li>• <a href="#">GPN Bulletin</a></li> <li>• <a href="#">Independent Nurse Magazine</a></li> <li>• <a href="#">Practice Nursing</a></li> <li>• <a href="#">Practice Nursing Highlights</a></li> </ul>
QNI	<ul style="list-style-type: none"> <li>• <a href="#">QNI</a></li> <li>• <a href="#">Upcoming Events</a></li> <li>• <a href="#">Project Funding – The Queen's Nursing Institute</a></li> </ul>
NMC	<ul style="list-style-type: none"> <li>• <a href="#">NMC</a></li> </ul>
CMO / CNO	<ul style="list-style-type: none"> <li>• <a href="#">Chief Nursing Officer for England's strategic plan for research</a></li> </ul>
World Health Organisation	<ul style="list-style-type: none"> <li>• <a href="#">WHO</a></li> <li>• <a href="#">OpenWHO</a></li> </ul>
Nice	<ul style="list-style-type: none"> <li>• <a href="#">NICE</a></li> <li>• <a href="#">NICE News   February 2022</a></li> </ul>
RCGP / BMA / The Lancet	<ul style="list-style-type: none"> <li>• <a href="#">The Lancet</a></li> <li>• <a href="#">British Medical Journal</a></li> <li>• <a href="#">Royal College of General Practitioners</a></li> <li>• <a href="#">QOF QI hub</a></li> <li>• <a href="#">BMA Update</a></li> <li>• <a href="#">RCGP News Updates</a></li> <li>• <a href="#">FREE eLearning on cardiorenal metabolic (CRM) medicine</a></li> <li>• <a href="#">LGBTQ+ history month   racism survey results   what do you think of NHS IT?</a></li> </ul>
Midlands Academic Health Science Network	<ul style="list-style-type: none"> <li>• <a href="#">WMAHSN Network</a></li> <li>• <a href="#">The AHSN Newsletter</a></li> </ul>
Healthwatch	<ul style="list-style-type: none"> <li>• <a href="#">Healthwatch</a></li> </ul>
Other	<ul style="list-style-type: none"> <li>• <a href="#">Apprenticeships in Primary and Social Care</a></li> </ul>

Free Training / Webinars / Meetings / CPD	
e-Learning for Health	<ul style="list-style-type: none"> <li>• <a href="#">New elearning session highlights dermatological side effects of COVID-19</a></li> <li>• <a href="#">New COVID-19 community contact tracing programme now available</a></li> <li>• <a href="#">Staff Recovery Resources for critical care and the wider health workforce recovering from the COVID-19 pandemic</a></li> <li>• <a href="#">MindEd infographic highlights programme's success during COVID-19</a></li> <li>• <a href="#">Long COVID elearning session available</a></li> <li>• <a href="#">The Changing Story of Cancer programme</a></li> <li>• <a href="#">Updates to the Flu Immunisation elearning programme for the 2021/22 flu season</a></li> <li>• <a href="#">Flu Immunisation programme - elearning</a></li> <li>• <a href="#">Foundation elearning programme update September 2021</a></li> </ul>
Eventbrite	<ul style="list-style-type: none"> <li>• <a href="#">Understanding Mental Health To Better Understand Young People And You</a></li> <li>• <a href="#">What's Stress Costing You? Take Health Beyond Conventional Medicine-Birming Tickets, Multiple Dates</a></li> <li>• <a href="#">Wounds on Thursdays</a></li> </ul>
YouTube	<ul style="list-style-type: none"> <li>• <a href="#">NHS England</a></li> </ul>
Blogs/Vlogs	<ul style="list-style-type: none"> <li>• <a href="#">How well do vaccines protect against Omicron? What the data shows</a></li> <li>• <a href="#">A career in science - past, present and future</a></li> <li>• <a href="#">Changing the COVID-19 Case Definition</a></li> <li>• <a href="#">Reporting the vital statistics - how data management has been central to the handling of the pandemic - UK Health Security Agency</a></li> <li>• <a href="#">Reflecting on a year responding to COVID-19</a></li> <li>• <a href="#">Let's talk about ethics review - Health Research Authority</a></li> <li>• <a href="#">Monitoring the Mental Health Act in 2020/21   by Care Quality Commission</a></li> </ul>
Area Bulletins	
BCWB Training Hub	<ul style="list-style-type: none"> <li>• <a href="#">Black Country and West Birmingham Training Hub</a></li> </ul>
Evidence based care	<ul style="list-style-type: none"> <li>• <a href="#">Home - aomrcebi</a></li> </ul>

*Continuation of Free Training / Webinars / Meetings / CPD*

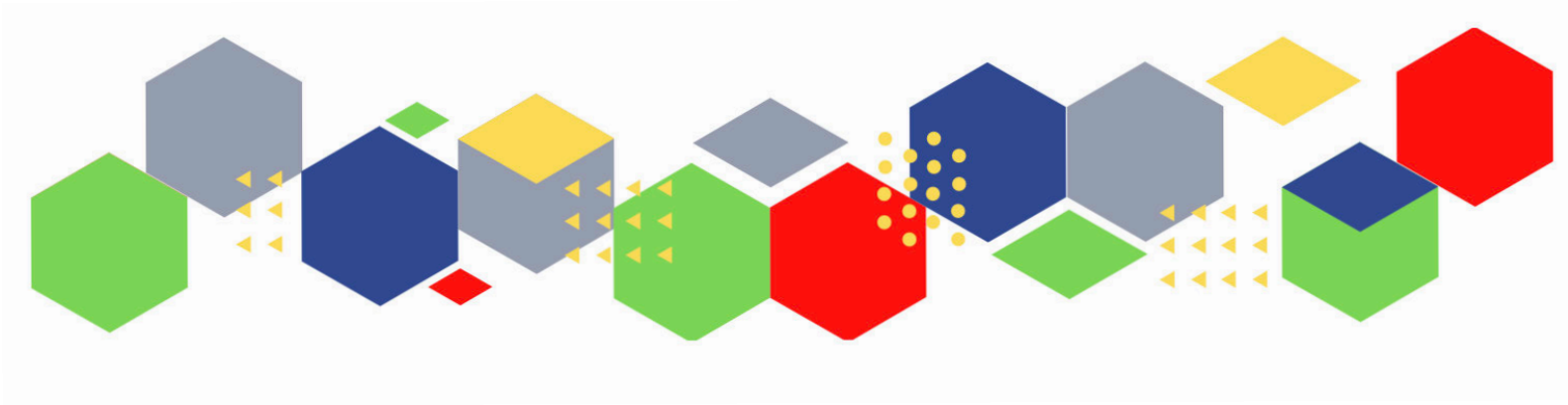
Development / Information and Knowledge

- [FutureProof Health Training & Events](#)
- [RCN Events - West Midlands](#)
- [Inaugural Broadcasts 2021](#)
- [24th March 2022 - RCN Clinical Research Nursing Conference 2022](#)
- [Menopause Training](#)
- [RCGP Learning](#)
- [Deep Dive on DPP-4 Inhibitors](#)
- [Bringing people together to share knowledge - Virtual Conferences](#)
- [ADVANCE CARE PLANNING](#)
- [IDENTIFYING & MANAGING A DYING PATIENT](#)
- [Monthly RCGP Post-Covid Syndrome \(Long Covid\) Training Session](#)
- [FREE eLearning on influenza](#)
- [Guidelines Live](#)
- [Thrive in Life: Enjoying Post Cancer Happiness - Birmingham Tickets, Multiple Dates | Eventbrite](#)
- [Senior Mental Health Lead Training](#)
- [Celebrating World Diabetes Day - Living with Diabetes Q&A Webinar](#)
- [Ask Marc Launch Event](#)
- [GP Notebook Study Groups](#)
- [Time for Care Programme/Access Improvement Programme](#)
- [A JWC Masterclass on Bovine Dermal Scaffolds](#)
- [Digital Nursing Summit | Secure your place](#)
- [West Midlands MARAC and Housing and Homelessness: Better Connected Tickets, Wed 23 Mar 2022 at 13:00](#)
- [Primary Care Nursing Live](#)
- [Cardiovascular Masterclass Series - Password: CVM2022](#)
- [PCN and Practice Manager Development Programme](#)

*Continuation of Free Training / Webinars / Meetings / CPD*

Podcasts	<ul style="list-style-type: none"> <li>• <a href="#">The Nursing Handover Podcast</a></li> <li>• <a href="#">Nursing Standard Podcasts</a></li> <li>• <a href="#">What Makes a Nurse?</a></li> <li>• <a href="#">The MedicsPro Podcast</a></li> <li>• <a href="#">Nursing Matters</a></li> <li>• <a href="#">Welcome to the BJN Podcast</a></li> <li>• <a href="#">Why we care</a></li> <li>• <a href="#">EBN podcast</a></li> <li>• <a href="#">This Is Nursing</a></li> <li>• <a href="#">Maroon Mindset</a></li> <li>• <a href="#">Teach me, I'm a Nurse</a></li> <li>• <a href="#">Past Caring</a></li> <li>• <a href="#">RCGP eLearning podcast</a></li> <li>• <a href="#">The BMJ Podcast</a></li> <li>• <a href="#">Primary Care Network podcasts</a></li> <li>• <a href="#">The Professional Support Unit's Pandemic Podcast</a></li> <li>• <a href="#">How can public health nurses help deliver the Healthy Child Programme this winter?</a></li> <li>• <a href="#">Talking GP</a></li> </ul>
Research	<ul style="list-style-type: none"> <li>• <a href="#">Science Daily</a></li> <li>• <a href="#">Multimorbidity / multiple long-term conditions (MLTC)</a></li> <li>• <a href="#">Funding bodies launch consultation on future research assessment</a></li> <li>• <a href="#">HRA Latest, February 2022: Let's talk about ethics review; smoothing the way to confidentiality support and more</a></li> </ul>
Freebies	<ul style="list-style-type: none"> <li>• <a href="#">Blue Light Card</a></li> </ul>
Other	





Thank you for reading Future Proof Health's weekly news!  
If you missed past issues, please click [here](#) to view them

More information can be found on our website, [here](#)

Don't forget to like us on [Facebook](#) & Follow us on [Twitter](#)

