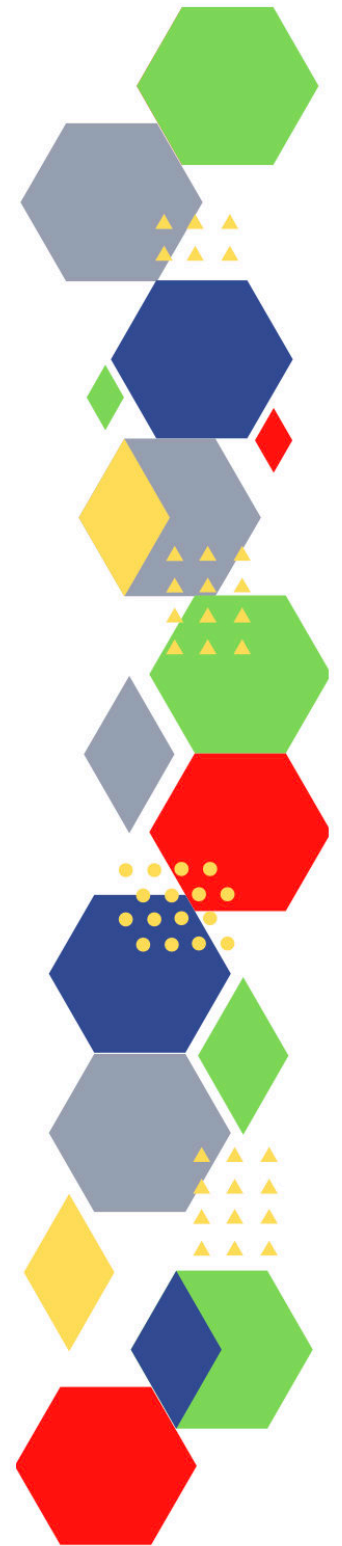




Future Proof Health Presents

Weekly News

11th August 2022



Communication	
Communication with Patients	
Communication within Teams	
Consent	<ul style="list-style-type: none"> <li>• <a href="#">Gillick competency and Fraser guidelines</a></li> <li>• <a href="#">ReSPECT for healthcare professionals</a></li> </ul>
People and Personal Development	
Personal / People Development / Leadership	<ul style="list-style-type: none"> <li>• <a href="#">Accountability and delegation in practice</a></li> </ul>
NHS Employers / HR / NHS Pension	<ul style="list-style-type: none"> <li>• <a href="#">NHS Employers</a></li> <li>• <a href="#">Pensions Online</a></li> </ul>
Health, Safety & Security	
	<ul style="list-style-type: none"> <li>• <a href="#">NPSA</a></li> <li>• <a href="#">Control of Substances Hazardous to Health (COSHH)</a></li> </ul>
Gov UK - NHS	
CQC	<ul style="list-style-type: none"> <li>• <a href="#">GP mythbusters</a></li> </ul>
MIMS	<ul style="list-style-type: none"> <li>• <a href="#">Prescribing Update</a></li> </ul>
Antibiotic steward-ship / Anti-microbial resistance	<ul style="list-style-type: none"> <li>• <a href="#">Antimicrobial resistance surveillance pilot site selection and database extension - GOV.UK (www.gov.uk)</a></li> <li>• <a href="#">NHS England » NHS lands breakthrough in global battle against superbugs</a></li> </ul>
Drug / Device Alerts (MHRA)	
Emergency Situations	<ul style="list-style-type: none"> <li>• <a href="#">Resuscitation Council UK</a></li> </ul>
Infection Control / Infection Statics	<ul style="list-style-type: none"> <li>• <a href="#">NHS England » National infection prevention and control</a></li> </ul>

Vaccines / Medications / Prescribing	<ul style="list-style-type: none"> <li>• <a href="#">Protocol for ordering, storing and handling vaccines</a></li> <li>• <a href="#">A Competency Framework for all Prescribers</a></li> <li>• <a href="#">Non-medical prescribing</a></li> <li>• <a href="#">The Human Medicines Regulations 2012</a></li> <li>• <a href="#">RCN - Non-medical prescribers</a></li> <li>• <a href="#">Royal Pharmaceutical Society</a></li> <li>• <a href="#">Standards for prescribing</a></li> <li>• <a href="#">Clinical Negligence Scheme for General Practice</a></li> <li>• <a href="#">Home - electronic medicines compendium (emc)</a></li> <li>• <a href="#">Drug shortages - live tracker   MIMS online</a></li> <li>• <a href="#">NHS saves £1.2 billion on medicines over three years</a></li> </ul>
Safe Guarding	<ul style="list-style-type: none"> <li>• <a href="#">Female genital mutilation (FGM)</a></li> <li>• <a href="#">PREVENT</a></li> <li>• <a href="#">Child protection system in the UK</a></li> <li>• <a href="#">Safeguarding Adults</a></li> <li>• <a href="#">Safeguarding children: detailed information</a></li> <li>• <a href="#">Wolverhampton - WeCAN Toolkit Relaunch - 21st June 2022 (govdelivery.com)</a></li> <li>• <a href="#">Forced Marriage Unit statistics 2021 (www.gov.uk)</a></li> </ul>
Practice Policies	<ul style="list-style-type: none"> <li>• <a href="#">Nursing Management   RCNi</a></li> </ul>
Audit	
Information Governance / Record Keeping	<ul style="list-style-type: none"> <li>• <a href="#">Guide to Data Protection</a></li> <li>• <a href="#">Supporting general practice – Medical record keeping</a></li> </ul>
<b>Quality &amp; Service Improvement</b>	
Quality, Service & Improvement	<ul style="list-style-type: none"> <li>• <a href="#">The PRSB</a></li> <li>• <a href="#">General Practice Assessment Questionnaire (GPAQ)</a></li> <li>• <a href="#">Healthwatch</a></li> <li>• <a href="#">NHS Five Year Forward View</a></li> <li>• <a href="#">General Practice Forward View</a></li> <li>• <a href="#">NMC</a></li> <li>• <a href="#">Dr Jon Griffiths Blog</a></li> <li>• <a href="#">NHS Confed</a></li> <li>• <a href="#">apply for the Primary Care – Quality Improvement Facilitation Development Programme (createsend1.com)</a></li> <li>• <a href="#">NHS England » Freedom to speak up</a></li> </ul>

Roles in General Practice	<ul style="list-style-type: none"> <li>• <a href="#">Standards for nursing associates</a></li> <li>• <a href="#">GP mythbuster 57: Health Care Assistants in General Practice</a></li> <li>• <a href="#">How NHS Knowledge and Library Services can support AHPs - YouTube (createsend1.com)</a></li> </ul>
Revalidation	
Personal Practice & Development	<ul style="list-style-type: none"> <li>• <a href="#">General practice nursing capabilities framework - Skills for Health (createsend1.com)</a></li> </ul>
Practice Management	<ul style="list-style-type: none"> <li>• <a href="#">Institute of General Practice Management</a></li> <li>• <a href="#">Practice Index</a></li> </ul>
Employment	
NHS Self Care & Resilience	<ul style="list-style-type: none"> <li>• <a href="#">Samaritans</a></li> <li>• <a href="#">Mental Health at work</a></li> <li>• <a href="#">Calm</a></li> <li>• <a href="#">Supporting our NHS people</a></li> <li>• <a href="#">The Hub :: Black Country Healthcare NHS Foundation Trust</a></li> </ul>
Practice Transformation / Innovation Agency	<ul style="list-style-type: none"> <li>• <a href="#">NHS England » NHS estates and facilities workforce action plan</a></li> </ul>
Future of NHS / General Practice / NHS Recovery	<ul style="list-style-type: none"> <li>• <a href="#">NHS England</a></li> <li>• <a href="#">NHS England » Primary care</a></li> <li>• <a href="#">NHS mandate 2022 to 2023</a></li> </ul>
ICS / ICB / ICP / PCN Commissioning	<ul style="list-style-type: none"> <li>• <a href="#">Integrated care (england.nhs.uk)</a></li> </ul>
QOF / PHOF / DES / LES / NHS Contract / CQRS / CQUIN	<ul style="list-style-type: none"> <li>• <a href="#">NHS England » GP Contract</a></li> <li>• <a href="#">Personal Health Budgets: Quarter 4 2021-22 - NHS Digital</a></li> </ul>

Leadership / Innovation	<ul style="list-style-type: none"> <li>• <a href="#">Leadership Academy</a></li> <li>• <a href="#">Free learning and development offers (campaign-archive.com)</a></li> </ul>
Greener NHS	<ul style="list-style-type: none"> <li>• <a href="#">Roundtable discussion: 'The climate emergency is a health emergency'   Local Government Chronicle (LGC) (lgcplus.com)</a></li> <li>• <a href="#">Greener Practice – Greener Practice – UK's primary care sustainability network (createsend1.com)</a></li> <li>• <a href="#">Practical toolkit (createsend1.com)</a></li> </ul>
<b>Personalised Care</b>	
Personalised Care / Self Care / Social Prescribing / Health Coaching	<ul style="list-style-type: none"> <li>• <a href="#">Self Care forum</a></li> <li>• <a href="#">Personalised Care Institute</a></li> <li>• <a href="#">Personalised care</a></li> <li>• <a href="#">Social Prescribing Academy</a></li> <li>• <a href="#">Leadership for Personalised Care   Leadership Framework   Programmes for leaders in healthcare, social care and beyond (createsend1.com)</a></li> <li>• <a href="#">PCC Events</a></li> </ul>
Group consultation	
Working Differently	
Shared Decision Making	<ul style="list-style-type: none"> <li>• <a href="#">NHS England » Choice</a></li> <li>• <a href="#">NHS England » The Healthcare Inequalities Improvement Dashboard</a></li> <li>• <a href="#">NHS England » Decision support tools (createsend1.com)</a></li> <li>• <a href="#">NHS England » Shared decision making (createsend1.com)</a></li> <li>• <a href="#">NICE standards framework for shared decision making support tools, including patient decision aids (createsend1.com)</a></li> <li>• <a href="#">NHS England » Decision support tools: making a decision about a health condition</a></li> </ul>
<b>Equality &amp; Diversity</b>	
Equality & Diversity	<ul style="list-style-type: none"> <li>• <a href="#">Public Health Profiles</a></li> <li>• <a href="#">NHS England » Support for our diverse colleagues (createsend1.com)</a></li> </ul>
Inclusion Health	<ul style="list-style-type: none"> <li>• <a href="#">Health Creation Academic Network</a></li> </ul>

Poverty / Homelessness	<ul style="list-style-type: none"> <li>• <a href="#">Crisis</a></li> <li>• <a href="#">This is Poverty</a></li> <li>• <a href="#">Poverty, economic inequality and mental health</a></li> </ul>
Population Health / Health Communities	
Thrive Into Work	<ul style="list-style-type: none"> <li>• <a href="#">Thrive into Work</a></li> <li>• <a href="#">Thrive into Work Referral form</a></li> </ul>
Health Inequalities	<ul style="list-style-type: none"> <li>• <a href="#">NHS News</a></li> <li>• <a href="#">Addressing local inequalities through employment   NHS Employers</a></li> </ul>
Trans / Non-binary Health / LGBTQ+	<ul style="list-style-type: none"> <li>• <a href="#">LGBT Foundation</a></li> <li>• <a href="#">NHS population screening: information for trans and non-binary people</a></li> <li>• <a href="#">Cervical screening for trans men and/or non-binary people</a></li> <li>• <a href="#">Home - Pride House Birmingham (pridehousebham.org.uk)</a></li> </ul>
Migrant / Refugee Health	<ul style="list-style-type: none"> <li>• <a href="#">THE REFUGEE &amp; MIGRANT CENTRE</a></li> <li>• <a href="#">Supporting refugee and migrant health care in England   The King's Fund (kingsfund.org.uk)</a></li> </ul>
Traveller / Gypsy / Romany Health	<ul style="list-style-type: none"> <li>• <a href="#">Gypsy Roma and Traveller History and Culture   The Traveller Movement</a></li> <li>• <a href="#">Friends, Families and Travellers (gypsy-traveller.org)</a></li> </ul>
Veterans Health	<ul style="list-style-type: none"> <li>• <a href="#">The first call for help takes courage</a></li> </ul>
<b>Management of Emergency Situations</b>	
Management of Emergency Situations	<ul style="list-style-type: none"> <li>• <a href="#">Practice Nursing - Acute onset low back pain leading to a diagnosis of cauda equina syndrome: a case study</a></li> <li>• <a href="#">Practice Nursing - Anaphylaxis: how to recognise and manage in primary care</a></li> </ul>
111 / Emergency Care	<ul style="list-style-type: none"> <li>• <a href="#">NHS England » Why think Same Day Emergency Care? One-page guides for ambulance and NHS 111 clinicians</a></li> </ul>

<i>Continuation of Management of Emergency Situations</i>	
First Contact	<ul style="list-style-type: none"> <li>• <a href="#">Supporting general practice – Common pitfalls</a></li> <li>• <a href="#">Paediatrics for Primary Care (and anyone else) (gppaedstips.blogspot.com)</a></li> </ul>
Red Flags	
Sepsis	<ul style="list-style-type: none"> <li>• <a href="#">Sepsis: recognition, diagnosis and early management</a></li> <li>• <a href="#">Sepsis guidance implementation advice for adults</a></li> <li>• <a href="#">Sepsis in Children</a></li> <li>• <a href="#">Sepsis Trust</a></li> <li>• <a href="#">quick SEPSIS RELATED ORGAN FAILURE ASSESSMENT</a></li> <li>• <a href="#">NMC OSCE NEWS CHARTS / NEWS 2 / National Early Warning Scoring System Explained / How to Chart OSCE - YouTube</a></li> <li>• <a href="#">Ep 50 – Post-sepsis syndrome - GPnotebook Podcast</a></li> </ul>
Therapeutic Monitoring	<ul style="list-style-type: none"> <li>• <a href="#">Guidelines for Therapeutic Drug Monitoring (nbt.nhs.uk)</a></li> </ul>
OSCE	<ul style="list-style-type: none"> <li>• <a href="#">Geeky Medics</a></li> <li>• <a href="#">Abdominal Examination - Demonstration - YouTube</a></li> <li>• <a href="#">Cardiovascular Examination - Demonstration - YouTube</a></li> <li>• <a href="#">Respiratory Examination - Demonstration - YouTube</a></li> <li>• <a href="#">Physical Diagnosis Skills - University of Washington School of Medicine</a></li> <li>• <a href="#">Practice Nursing - Assessment and examination of the respiratory system</a></li> </ul>
Role Specific	
Cervical Cytology	<ul style="list-style-type: none"> <li>• <a href="#">Guide to the interim assessment</a></li> <li>• <a href="#">British Association for Cytopathology</a></li> <li>• <a href="#">Lab Tests Online</a></li> <li>• <a href="#">HPV vaccine alongside surgery may reduce risk of cervical lesions returning - Nursing in PracticeNursing in Practice (cogora.com)</a></li> <li>• <a href="#">Practice Nursing - Understanding HPV and cervical screening</a></li> </ul>

<i>Continuation of Role Specific</i>	
Ear Care	<ul style="list-style-type: none"> <li>• <a href="#">Ear Care Centre</a></li> <li>• <a href="#">RNID</a></li> </ul>
Wound Management	<ul style="list-style-type: none"> <li>• <a href="#">Microworld</a></li> <li>• <a href="#">Tissue Viability Society</a></li> <li>• <a href="#">The BLS</a></li> <li>• <a href="#">Practice Nursing - Preventing skin tears among older adults in general practice</a></li> </ul>
Minor Surgery	
Obtaining Samples / Results	<ul style="list-style-type: none"> <li>• <a href="#">Lab Tests Online</a></li> </ul>
Health Promotion / Health Screening	
Health Promotion / Population Health	<ul style="list-style-type: none"> <li>• <a href="#">Better Health</a></li> <li>• Dudley - <a href="#">Free training to run exercise sessions (govdelivery.com)</a></li> </ul>
Health Screening	<ul style="list-style-type: none"> <li>• <a href="#">PHE Screening</a></li> </ul>
PHE / OHID / UKHSA	<ul style="list-style-type: none"> <li>• <a href="#">Knowledge &amp; Library Services</a></li> <li>• <a href="#">Campaign Resources</a></li> <li>• <a href="#">Public Health Profiles</a></li> <li>• <a href="#">Health Publications</a></li> <li>• <a href="#">Health Profile for England 2021</a></li> <li>• <a href="#">English indices of deprivation 2019</a></li> <li>• <a href="#">Health Protection Report volume 16 (2022) - GOV.UK (www.gov.uk)</a></li> </ul>
NHS Health Check	<ul style="list-style-type: none"> <li>• <a href="#">NHS Health Check</a></li> </ul>
NOIDS / PHE Surveillance / Syndromic Surveillance	
Addiction/Smoking	<ul style="list-style-type: none"> <li>• <a href="#">Drink Coach</a></li> <li>• <a href="#">Stop smoking interventions and services</a></li> </ul>



## Immunisation / Travel Health

- [Joint Committee on Vaccination and Immunisation](#)
- [Immunisation against infectious disease](#)
- [West Midlands Immunisation Service](#)
- [Vaccination of individuals with uncertain or incomplete immunisation status](#)
- [Immunisation Queries: Immunisation information for Health Care Services within the West Midlands area](#)
- [Immunisation](#)
- [Vaccine Taskforce to merge with UKHSA and OLS - GOV.UK \(www.gov.uk\)](#)
- [Practice Nursing - You know where you can stick that ... or do you? Where to inject the deltoid and why](#)
- [Practice Nursing - Pneumococcal disease and vaccination: recent changes to the schedule](#)

Flu	<ul style="list-style-type: none"> <li>• <a href="#">Flu and flu vaccinations</a></li> <li>• <a href="#">The national influenza immunisation programme 2021 to 2022</a></li> <li>• <a href="#">Flu vaccines for the 2021 to 2022 season poster</a></li> <li>• <a href="#">Appendix C: Flu vaccinator competency assessment tool</a></li> <li>• <a href="#">Healthcare assistants and flu vaccinations</a></li> <li>• <a href="#">Seasonal influenza vaccine uptake in GP patients: winter season 2021 to 2022 (www.gov.uk)</a></li> </ul>
Covid Vaccine	<ul style="list-style-type: none"> <li>• <a href="#">Greenbook COVID-19 chapter 14a</a></li> <li>• <a href="#">COVID-19 Vaccine Moderna e-learning now available</a></li> <li>• <a href="#">GP COVID-19 vaccine dashboard</a></li> <li>• <a href="#">Updates made to the COVID-19 vaccination learning programme</a></li> </ul>
Children	
Adults	<ul style="list-style-type: none"> <li>• <a href="#">Immunisation patient group direction (PGD) templates</a></li> <li>• <a href="#">Shingles immunisation programme: introduction of Shingrix® letter</a></li> </ul>
Vaccine Update	<ul style="list-style-type: none"> <li>• <a href="#">Vaccine update: issue 330, June 2022, COVID-19 spring special edition - GOV.UK (www.gov.uk)</a></li> <li>• <a href="#">Vaccine update: issue 329, May 2022 - GOV.UK (www.gov.uk)</a></li> <li>• <a href="#">Vaccine update: issue 328, May 2022, Shingrix® special edition - GOV.UK (www.gov.uk)</a></li> <li>• <a href="#">Vaccine update: issue 327, May 2022, SCID, TB and BCG special edition (www.gov.uk)</a></li> <li>• <a href="#">Vaccine update: issue 326, April 2022, HPV special edition - GOV.UK (www.gov.uk)</a></li> <li>• <a href="#">Vaccine update: issue 325, April 2022, flu special edition - GOV.UK (www.gov.uk)</a></li> </ul>

<i>Continuation of Immunisation / Travel Health</i>	
PGD	<ul style="list-style-type: none"> <li>• <a href="#">Hib/MenC: patient group direction (PGD) template - GOV.UK (www.gov.uk)</a></li> </ul>
Travel Health	<ul style="list-style-type: none"> <li>• <a href="#">Travel Health Pro</a></li> <li>• <a href="#">Fit for Travel</a></li> <li>• <a href="#">Travel Health</a></li> <li>• <a href="#">Jane Chiodini</a></li> <li>• <a href="#">Corona.Help</a></li> <li>• <a href="#">Visiting friends and relatives abroad: health advice</a></li> <li>• <a href="#">Travelling abroad to visit friends and relatives: Advice for travellers</a></li> <li>• <a href="#">Mosquito bite avoidance: advice for travellers</a></li> <li>• <a href="#">Practice Nursing - Guidelines for malaria prevention in travellers: what is new?</a></li> <li>• <a href="#">Practice Nursing - Rabies: an update for nurses in general practice</a></li> </ul>
<i>Mental Health / Learning Disability / Disability</i>	
Mental Health	<ul style="list-style-type: none"> <li>• <a href="#">Mental Health</a></li> <li>• <a href="#">Mental Health UK</a></li> <li>• <a href="#">Mind</a></li> <li>• <a href="#">Place2b</a></li> <li>• <a href="#">Rethink Mental Illness</a></li> <li>• <a href="#">Young Minds</a></li> <li>• <a href="#">Every Mind Matters</a></li> <li>• <a href="#">Calm</a></li> <li>• <a href="#">Headspace</a></li> <li>• <a href="#">Better Health - Every Mind Matters - Resources</a></li> <li>• <a href="#">ZSA Training</a></li> <li>• <a href="#">NHS &gt; Mental Health</a></li> <li>• <a href="#">Practice Nursing - Improving physical health in people with severe mental illness</a></li> <li>• <a href="#">Practice Nursing - The role of primary care in preventing male suicide</a></li> </ul>
Learning Disability	<ul style="list-style-type: none"> <li>• <a href="#">Learning Disabilities</a></li> <li>• <a href="#">Learning Disability England</a></li> <li>• <a href="#">Mencap</a></li> <li>• <a href="#">Bild</a></li> <li>• <a href="#">Autism</a></li> <li>• <a href="#">Building the right support for people with a learning disability and autistic people - GOV.UK (www.gov.uk)</a></li> </ul>

<i>Continuation of Mental Health / Learning Disability / Disability</i>	
Disability (Inc. hearing and visual)	<ul style="list-style-type: none"> <li>• <a href="#">Disability Rights UK</a></li> <li>• <a href="#">Disability Matters</a></li> <li>• <a href="#">RNID - National hearing loss charity</a></li> <li>• <a href="#">How to value non-verbal communication over spoken language (rcni.com)</a></li> </ul>
From Cradle to...	
Infant Health	<ul style="list-style-type: none"> <li>• <a href="#">Tommys</a></li> <li>• <a href="#">First Steps Nutrition Trust</a></li> <li>• <a href="#">Bliss</a></li> <li>• <a href="#">ICON Toolkit</a></li> <li>• <a href="#">Health visitor numbers fall as overall nurse numbers increase - Nursing in Practice</a> <a href="#">(cogora.com)</a></li> </ul>
Child Health	<ul style="list-style-type: none"> <li>• <a href="#">Unicef</a></li> <li>• <a href="#">Health Professional Academy</a></li> <li>• <a href="#">Premature Babies</a></li> <li>• <a href="#">Child and Maternal Health</a></li> <li>• <a href="#">Women and Child First</a></li> <li>• <a href="#">Child Health Information Services</a></li> <li>• <a href="#">Place2b</a></li> <li>• <a href="#">Childhood eczema</a></li> <li>• <a href="#">Childhood asthma</a></li> <li>• <a href="#">Paediatrics for Primary Care (and anyone else) (gppaedstips.blogspot.com)</a></li> <li>• <a href="#">Me first: Helping health and care professionals communicate more effectively with children and young people</a></li> <li>• <a href="#">Rashes in children: what's the diagnosis?   Differential diagnoses   Guidelines in Practice</a></li> <li>• <a href="#">NHS England » North East and North Cumbria take an integrated approach to addressing children's healthcare inequalities (createsend1.com)</a></li> <li>• <a href="#">Overview   Social, emotional and mental wellbeing in primary and secondary education   Guidance   NICE</a></li> <li>• <a href="#">NHS England » NHS boosts children's mental health workforce by 40%</a></li> </ul>

Adolescent Health	<ul style="list-style-type: none"><li>• <a href="#">Adolescent Health Programme</a></li><li>• <a href="#">Society for Adolescent Health and Medicine</a></li><li>• <a href="#">Young Minds</a></li><li>• <a href="#">COYL Heads Up Report July 2022</a></li></ul>
Mens Health	<ul style="list-style-type: none"><li>• <a href="#">Mens Health Forum</a></li><li>• <a href="#">Mens Health Month</a></li><li>• <a href="#">Mens health.org</a></li><li>• <a href="#">Mens Health UK</a></li><li>• <a href="#">Men and mental health</a></li><li>• <a href="#">Men's Mental Health Awareness</a></li><li>• <a href="#">Prostate Cancer UK</a></li><li>• <a href="#">Orchid Fighting Male Cancer</a></li><li>• <a href="#">Prostate Cancer UK Facebook Page</a></li><li>• <a href="#">Movember</a></li><li>• <a href="#">Practice Nursing - Management pathways for erectile dysfunction in primary care</a></li><li>• <a href="#">Practice Nursing - The role of primary care in preventing male suicide</a></li><li>• <a href="#">Lower urinary tract symptoms in men: what's the diagnosis?   Differential diagnoses   Guidelines in Practice</a></li></ul>

<p>Women's Health</p>	<ul style="list-style-type: none"> <li>• <a href="#">Womens Health Concern</a></li> <li>• <a href="#">Well Being of Women</a></li> <li>• <a href="#">Coppa Feel</a></li> <li>• <a href="#">Menopause Matters</a></li> <li>• <a href="#">The Menopause Charity</a></li> <li>• <a href="#">Royal College of Obstetricians and Gynaecologists - Guidelines</a></li> <li>• <a href="#">Pelvic Partnership</a></li> <li>• <a href="#">CRUK - Womens Cancer</a></li> <li>• <a href="#">Breast Cancer Now</a></li> <li>• <a href="#">Foundation for Women's Cancer</a></li> <li>• <a href="#">Eve Appeal</a></li> <li>• <a href="#">Ovarian.Org</a></li> <li>• <a href="#">Jo's Trust</a></li> <li>• <a href="#">Well Spring</a></li> <li>• <a href="#">Know your Lemons</a></li> <li>• <a href="#">New best practice recommendations for menopause care published   MIMS online</a></li> <li>• <a href="#">Newson Health - Home</a></li> <li>• <a href="#">Practice Nursing - Managing the side effects of contraception</a></li> <li>• <a href="#">Practice Nursing - Hormone replacement therapy: update and practical prescribing</a></li> <li>• <a href="#">Practice Nursing - Urinary incontinence and pelvic organ prolapse in primary care</a></li> <li>• <a href="#">Pelvic floor dysfunction: key tenets from the new NICE guideline (mgp.co.uk)</a></li> <li>• <a href="#">Endometriosis: what nurses need to know and how to help patients (rcni.com)</a></li> <li>• <a href="#">Intervene early to lower the risk of endometrial hyperplasia and cancer   Hot topic   Guidelines in Practice</a></li> <li>• <a href="#">Heavy menstrual bleeding: what's the diagnosis?   Differential diagnoses   Guidelines in Practice</a></li> <li>• <a href="#">Breast pain: what's the diagnosis?   Differential diagnoses   Guidelines in Practice</a></li> <li>• <a href="#">HPV vaccine alongside surgery may reduce risk of cervical lesions returning</a></li> </ul>
<p>The Older Population</p>	<ul style="list-style-type: none"> <li>• <a href="#">BGS</a></li> <li>• <a href="#">Ageing Better</a></li> <li>• <a href="#">Delirium Champions - YouTube</a></li> <li>• <a href="#">Practice Nursing - Understanding skin infections in older adults</a></li> <li>• <a href="#">NHS England » Non-emergency patient transport services eligibility criteria: Consultation response</a></li> </ul>

Carers / Social Care / Care Homes	<ul style="list-style-type: none"> <li>• <a href="#">The Care Provider Alliance</a></li> <li>• <a href="#">Skills for Care</a></li> <li>• <a href="#">The Care Workers' Charity</a></li> <li>• <a href="#">Supporting Adult Carers</a></li> </ul>
Young Carers	<ul style="list-style-type: none"> <li>• <a href="#">Young carers   Action For Children</a></li> <li>• <a href="#">Young Carers   Supporting Young People Who Care (youngcarerscentre.org.uk)</a></li> </ul>
Complex Needs	<ul style="list-style-type: none"> <li>• <a href="#">Training materials for teachers of learners with severe, profound and complex learning difficulties (complexneeds.org.uk)</a></li> <li>• <a href="#">Complex needs - United Response</a></li> </ul>
Family Planning & Sexual Health	
Family Planning	<ul style="list-style-type: none"> <li>• <a href="#">Faculty of Sexual and Reproductive Healthcare Education and Training</a></li> <li>• <a href="#">Practice Nursing - Common questions on emergency and postcoital contraception</a></li> <li>• <a href="#">Practice Nursing - Managing the side effects of contraception</a></li> <li>• <a href="#">Contraception for women aged over 40: what, when, and for how long   Implementing guidelines   Guidelines in Practice</a></li> <li>• <a href="#">CPD module: Intrauterine contraception – what practice nurses need to know - Nursing in PracticeNursing in Practice (cogora.com)</a></li> </ul>
Reproductive	<ul style="list-style-type: none"> <li>• <a href="#">Tommys</a></li> </ul>
Sexual Health / Sexual Abuse	<ul style="list-style-type: none"> <li>• <a href="#">Sexual and Reproductive Health Profiles</a></li> <li>• <a href="#">FSRH Education &amp; Training</a></li> <li>• <a href="#">NICE guideline on reducing STIs   NICE guideline   Guidelines</a></li> </ul>
Maternity / Neonate health	

Care of Patients with Long Term Conditions	
LTC	<ul style="list-style-type: none"> <li>• <a href="#">Physical Activity for the Prevention and Management of Long-Term Conditions</a></li> </ul>
Diabetes & Pre-Diabetes	<ul style="list-style-type: none"> <li>• <a href="#">Mumoactive</a></li> <li>• <a href="#">The mySugr App</a></li> <li>• <a href="#">PCDS Entry level module series - Foot Check</a></li> <li>• <a href="#">Type 2 diabetes in adults: management</a></li> </ul>
Respiratory	<ul style="list-style-type: none"> <li>• <a href="#">Spirometry: step by step</a></li> <li>• <a href="#">ARTP</a></li> <li>• <a href="#">British Lung Foundation</a></li> <li>• <a href="#">The Primary Care Respiratory Society</a></li> <li>• <a href="#">Respiratory – Respimat® patient resources   Boehringer Ingelheim (boehringer-ingelheim.com)</a></li> <li>• <a href="#">Respiratory News &amp; Advice   (nursinginpractice.com)</a></li> <li>• <a href="#">Dudley pulmonary rehab - Template PI (dgft.nhs.uk)</a></li> <li>• <a href="#">Chronic cough in adults: what's the diagnosis? (guidelinesinpractice.co.uk)</a></li> </ul>
COPD	<ul style="list-style-type: none"> <li>• <a href="#">Right Breathe</a></li> <li>• <a href="#">GOLD COPD 2022 strategy   Independent professional body guideline   Guidelines</a></li> <li>• <a href="#">Practice Nursing - COPD, exacerbation and self-management: a literature review</a></li> <li>• <a href="#">Practice Nursing - Diagnosing COPD in general practice</a></li> <li>• <a href="#">Practice Nursing - Increasing physical activity in people with COPD</a></li> <li>• <a href="#">Practice Nursing - Monitoring respiratory rate in adults</a></li> </ul>
Asthma	<ul style="list-style-type: none"> <li>• <a href="#">Asthma UK</a></li> <li>• <a href="#">Asthma: diagnosis, monitoring and chronic asthma management</a></li> <li>• <a href="#">Global Initiative for Asthma</a></li> <li>• <a href="#">British guideline on the diagnosis and pharmacological management of asthma in children</a></li> </ul>
Hypertension	<ul style="list-style-type: none"> <li>• <a href="#">British Heart Foundation</a></li> <li>• <a href="#">Blood Pressure UK</a></li> <li>• <a href="#">Hypertension in adults: diagnosis and management</a></li> <li>• <a href="#">Hypertension in adults: diagnosis and treatment</a></li> <li>• <a href="#">Hypertension: symptoms to look out for and treatment options (rcni.com)</a></li> </ul>

*Continuation of Long Term Conditions*

CVD/AF	<ul style="list-style-type: none"> <li>• <a href="#">QRISK®3-2018 risk calculator</a></li> <li>• <a href="#">Heart Rhythm Alliance</a></li> <li>• <a href="#">CVD risk assessment and management</a></li> <li>• <a href="#">NHS lipid management pathway   NHS guideline   Guidelines</a></li> <li>• <a href="#">Blog   NB Medical (cmail19.com)</a></li> </ul>
Heart Failure	<ul style="list-style-type: none"> <li>• <a href="#">British Heart Foundation</a></li> <li>• <a href="#">British Society Guidelines</a></li> <li>• <a href="#">Practice Nursing - Understanding the pharmacology of heart failure</a></li> <li>• <a href="#">Understanding heart failure with preserved ejection fraction (independentnurse.co.uk)</a></li> </ul>
Cancer / Oncology	<ul style="list-style-type: none"> <li>• <a href="#">Surviving Thyroid Cancer</a></li> <li>• <a href="#">Help Us Help You - Lung Cancer Symptoms</a></li> <li>• <a href="#">Breast Cancer Now</a></li> <li>• <a href="#">Macmillian</a></li> <li>• <a href="#">Bowel Cancer UK</a></li> <li>• <a href="#">Brain Trust</a></li> <li>• <a href="#">CRUK</a></li> <li>• <a href="#">Action Cancer</a></li> <li>• <a href="#">Foundation for Women's Cancer</a></li> <li>• <a href="#">NHS England » Cancer</a></li> <li>• <a href="#">View webcast now (chronicconditions.co.uk)</a></li> <li>• <a href="#">NHS England » NHS launches awareness campaign for England's most deadly cancer</a></li> <li>• <a href="#">Government rejects MPs' warning on early cancer diagnosis - Committees - UK Parliament</a></li> <li>• <a href="#">Intervene early to lower the risk of endometrial hyperplasia and cancer   Hot topic   Guidelines in Practice</a></li> </ul>
Chronic Kidney Disease	<ul style="list-style-type: none"> <li>• <a href="#">Kidney.Org</a></li> <li>• <a href="#">Kidney Quality Improvement Partnership</a></li> </ul>
Liver Disease	<ul style="list-style-type: none"> <li>• <a href="#">British Liver Trust</a></li> <li>• <a href="#">Liver Research</a></li> <li>• <a href="#">BRITISH ASSOCIATION FOR THE STUDY OF THE LIVER</a></li> <li>• <a href="#">LIVERNORTH</a></li> <li>• <a href="#">LIVER DISEASE AND CIRRHOSIS</a></li> </ul>



*Continuation of Long Term Conditions*

Blood Disorders	<ul style="list-style-type: none"> <li>• <a href="#">Blood Cancer UK</a></li> <li>• <a href="#">UK Thalassaemia Society</a></li> <li>• <a href="#">The ITP Support Association</a></li> <li>• <a href="#">UK-ITP Paediatric ITP Registry</a></li> <li>• <a href="#">The Haemophilia Society</a></li> <li>• <a href="#">UK MDS Forum</a></li> <li>• <a href="#">Pernicious Anaemia Society</a></li> <li>• <a href="#">Haemochromatosis UK</a></li> </ul>
G.I	<ul style="list-style-type: none"> <li>• <a href="#">GIST Cancer UK</a></li> <li>• <a href="#">Pernicious Anaemia Society</a></li> <li>• <a href="#">Practice Nursing - Understanding constipation in adults</a></li> </ul>
ENT	<ul style="list-style-type: none"> <li>• <a href="#">Practice Nursing - Managing otalgia in general practice</a></li> </ul>
G.U	<ul style="list-style-type: none"> <li>• <a href="#">Supporting intermittent self-catheterisation in challenging circumstances (mah-communications.co.uk)</a></li> <li>• <a href="#">Practice Nursing - Urinary incontinence and pelvic organ prolapse in primary care</a></li> </ul>
ME / CFS / Fibromyalgia	<ul style="list-style-type: none"> <li>• <a href="#">ME Association</a></li> <li>• <a href="#">ME Research</a></li> <li>• <a href="#">Action for M.E</a></li> <li>• <a href="#">Fibromyalgia Action UK</a></li> <li>• <a href="#">Fibromyalgia UK</a></li> <li>• <a href="#">Home - Fibromyalgia Awareness UK (fibroawarenessuk.org)</a></li> <li>• <a href="#">Fibromyalgia - Symptoms, diagnosis and treatment   BMJ Best Practice</a></li> <li>• <a href="#">Fibromyalgia - The Brain Charity</a></li> </ul>
Neurological Conditions	<ul style="list-style-type: none"> <li>• <a href="#">The Brain Tumour Charity</a></li> <li>• <a href="#">Narcolepsy.Org</a></li> <li>• <a href="#">ACNR</a></li> <li>• <a href="#">MS Society UK   Information, research and support   Multiple Sclerosis Society UK</a></li> <li>• <a href="#">Home   MS Trust</a></li> <li>• <a href="#">Epilepsy Society</a></li> <li>• <a href="#">NICE multiple sclerosis guideline   NICE guideline   Guidelines</a></li> <li>• <a href="#">Education Resources (rosemontpharma.com)</a></li> </ul>

*Continuation of Long Term Conditions*

Musculoskeletal Conditions	<ul style="list-style-type: none"> <li>• <a href="#">Rheumatology</a></li> <li>• <a href="#">National Axial Spondyloarthritis Society</a></li> <li>• <a href="#">Musculoskeletal health</a></li> <li>• <a href="#">Musculoskeletal health: 5 year prevention strategic framework</a></li> <li>• <a href="#">Faculty of Occupational Medicine</a></li> <li>• <a href="#">Guide to embedding your first contact physiotherapy service</a></li> </ul>
Endocrine Disorders / Metabolic Disorders	<ul style="list-style-type: none"> <li>• <a href="#">Society for Endocrinology</a></li> <li>• <a href="#">Turner Syndrome Support Society</a></li> <li>• <a href="#">Thyroid Eye Disease</a></li> <li>• <a href="#">British Thyroid Foundation</a></li> <li>• <a href="#">Thyroid UK</a></li> <li>• <a href="#">The Pituitary Foundation</a></li> <li>• <a href="#">Addisons Disease</a></li> <li>• <a href="#">Parathyroid UK</a></li> <li>• <a href="#">The Royal Osteoporosis Society</a></li> <li>• <a href="#">Metabolic Support UK</a></li> </ul>
Frailty	<ul style="list-style-type: none"> <li>• <a href="#">Recognising frailty</a></li> <li>• <a href="#">Identifying frailty</a></li> <li>• <a href="#">CLINICAL FRAILTY SCALE</a></li> <li>• <a href="#">Practice Nursing - Dysphagia in the older person: an update</a></li> <li>• <a href="#">Practice Nursing - Preventing skin tears among older adults in general practice</a></li> <li>• <a href="#">Assessment of frailty in Alzheimer's: a literature review</a></li> </ul>
Dementia / Alzheimers	<ul style="list-style-type: none"> <li>• <a href="#">Dementia UK</a></li> <li>• <a href="#">Age UK - Understanding Dementia</a></li> <li>• <a href="#">Delirium Champions</a></li> <li>• <a href="#">Alzheimers Society</a></li> <li>• <a href="#">Common viruses may trigger Alzheimer's disease - Nursing in PracticeNursing in Practice (cogora.com)</a></li> <li>• <a href="#">Practice Nursing - Recognition and assessment of dementia in primary care</a></li> <li>• <a href="#">Practice Nursing - Assessment of frailty in Alzheimer's: a literature review</a></li> </ul>
Allergy / Auto-immune / Genetic Conditions	<ul style="list-style-type: none"> <li>• <a href="#">Allergy UK</a></li> <li>• <a href="#">British Society for Rheumatology</a></li> <li>• <a href="#">Addisons Disease</a></li> </ul>

*Continuation of Long Term Conditions*

Obesity	<ul style="list-style-type: none"> <li>• <a href="#">Obesity UK</a></li> <li>• <a href="#">Implementing the Guidelines algorithm on managing obesity in primary care (guidelinesinpractice.co.uk)</a></li> <li>• <a href="#">Junk food advertising ban on public transport linked to a reduction in obesity (cogora.com)</a></li> <li>• <a href="#">Practice Nursing - Understanding bariatric surgery to support patients in primary care</a></li> </ul>
Pain Management	<ul style="list-style-type: none"> <li>• <a href="#">Pain Concern</a></li> <li>• <a href="#">UK career framework for pain nurses</a></li> </ul>
Genomics	<ul style="list-style-type: none"> <li>• <a href="#">Practice Nursing - Understanding bariatric surgery to support patients in primary care</a></li> </ul>
Dermatology	<ul style="list-style-type: none"> <li>• <a href="#">British Association of Dermatologists</a></li> <li>• <a href="#">Eczema</a></li> <li>• <a href="#">The British Skin Foundation</a></li> <li>• <a href="#">Acne vulgaris: management</a></li> <li>• <a href="#">The Primary Care Dermatology Society</a></li> <li>• <a href="#">Acne.org</a></li> <li>• <a href="#">Allergy UK</a></li> <li>• <a href="#">Urticaria</a></li> <li>• <a href="#">Hives</a></li> <li>• <a href="#">Sunburn</a></li> <li>• <a href="#">Causes of cancer and reducing your risk</a></li> <li>• <a href="#">What is Rosacea?</a></li> <li>• <a href="#">Rosecea</a></li> <li>• <a href="#">The Rosacea Forum</a></li> <li>• <a href="#">Herpes Viruses Association</a></li> <li>• <a href="#">Shingles</a></li> <li>• <a href="#">Fungal Skin Infection - Foot</a></li> <li>• <a href="#">The Psoriasis Association</a></li> <li>• <a href="#">National Psoriasis Foundation</a></li> <li>• <a href="#">Melanoma</a></li> <li>• <a href="#">Skin Health Information</a></li> <li>• <a href="#">British Association of Plastic Reconstructive and Aesthetic Surgeons - Procedure Guides</a></li> <li>• <a href="#">Warts and verrucae</a></li> </ul>

<i>Continuation of Long Term Conditions</i>	
Dermatology	<ul style="list-style-type: none"> <li>• <a href="#">Practice Nursing - Fungal skin infections</a></li> <li>• <a href="#">Practice Nursing - Dermatology prescribing update: eczema</a></li> <li>• <a href="#">Practice Nursing - Understanding skin infections in older adults</a></li> <li>• <a href="#">Skin lesions: what's the diagnosis? (guidelinesinpractice.co.uk)</a></li> <li>• <a href="#">Implementing the NICE guideline on the management of acne vulgaris (guidelinesinpractice.co.uk)</a></li> <li>• <a href="#">New topical retinoid for acne   MIMS online (mkt6316.com)</a></li>   <li>• <a href="#">Rosacea: newer treatments can avoid antibiotics (guidelinesinpractice.co.uk)</a></li> </ul>
Multi-Morbidity	<ul style="list-style-type: none"> <li>• <a href="#">Multimorbidity</a></li> <li>• <a href="#">Multimorbidity / multiple long-term conditions (MLTC)</a></li> </ul>
Minor Illness / First Contact Assessment / OSCE	<ul style="list-style-type: none"> <li>• <a href="#">Fact Sheets - Self Care Forum</a></li> <li>• <a href="#">Facial rashes: what's the diagnosis?   Differential diagnoses   Guidelines in Practice</a></li> <li>• <a href="#">Bites and stings: when to prescribe an antibiotic (guidelinesinpractice.co.uk)</a></li> <li>• <a href="#">Rashes in children: what's the diagnosis?   Differential diagnoses   Guidelines in Practice</a></li> <li>• <a href="#">Skin lesions: what's the diagnosis?   Differential diagnoses   Guidelines in Practice</a></li> <li>• <a href="#">Rosacea: newer treatments can avoid antibiotics (guidelinesinpractice.co.uk)</a></li> <li>• <a href="#">Lower urinary tract symptoms in men: what's the diagnosis?   Differential diagnoses   Guidelines in Practice</a></li> <li>• <a href="#">Change in bowel habit: what's the diagnosis?   Differential diagnoses   Guidelines in Practice</a></li> <li>• <a href="#">Unintended weight loss: what's the diagnosis? (guidelinesinpractice.co.uk)</a></li> <li>• <a href="#">Skin lesions: what's the diagnosis? (guidelinesinpractice.co.uk)</a></li> <li>• <a href="#">Breast pain: what's the diagnosis?   Differential diagnoses   Guidelines in Practice</a></li> <li>• <a href="#">Rashes in children: what's the diagnosis?   Differential diagnoses   Guidelines in Practice</a></li> <li>• <a href="#">Red eye: what's the diagnosis? (guidelinesinpractice.co.uk)</a></li> <li>• <a href="#">Chronic cough in adults: what's the diagnosis? (guidelinesinpractice.co.uk)</a></li> <li>• <a href="#">Low back pain: what's the diagnosis?   Differential diagnoses   Guidelines in Practice</a></li> </ul>
Other / Case Studies	<ul style="list-style-type: none"> <li>• <a href="#">Heatwave: how to cope in hot weather - NHS (www.nhs.uk)</a></li> <li>• <a href="#">Ep 49 – Heat exhaustion and heatstroke - GPnotebook Podcast</a></li> <li>• <a href="#">Supporting vulnerable people before and during a heatwave: for health and social care professionals - GOV.UK</a></li> </ul>
End of Life Care	
End of Life Care	<ul style="list-style-type: none"> <li>• <a href="#">ReSPECT for healthcare professionals</a></li> <li>• <a href="#">Hospice UK</a></li> <li>• <a href="#">Palliative and End of Life Care Profiles - OHID (dhsc-mail.co.uk)</a></li> </ul>

Covid-19 / Monkeypox	
Covid-19	<ul style="list-style-type: none"> <li>• <a href="#">Covid Live</a></li> </ul>
Long Covid	<ul style="list-style-type: none"> <li>• <a href="#">Supporting your recovery after COVID-19</a></li> <li>• <a href="#">Long Covid Toolkit</a></li> <li>• <a href="#">Long term effects of COVID (Long COVID)</a></li> <li>• <a href="#">Post-COVID Syndrome (Long COVID)</a></li> <li>• <a href="#">COVID-19 Yorkshire Rehabilitation Screening Tool</a></li> <li>• <a href="#">FOM Guidance</a></li> </ul>
Monkeypox	
News & Views	
Digital News / Remote Consultations	<ul style="list-style-type: none"> <li>• <a href="#">Digital Health News Webinars</a></li> <li>• <a href="#">Digital Health News</a></li> <li>• <a href="#">NHS Digital</a></li> <li>• <a href="#">DigiHealthWell</a></li> <li>• <a href="#">Public Sector Events, Conferences and Training - Inside Government</a></li> <li>• <a href="#">Digital Transformation</a></li> </ul>
PSNC News / Pharmacy	<ul style="list-style-type: none"> <li>• <a href="#">National Pharmacy Association</a></li> <li>• <a href="#">Royal Pharmaceutical Society</a></li> <li>• <a href="#">Medicines Learning Portal</a></li> <li>• <a href="#">Specialist Pharmacy Service</a></li> </ul>
Pulse / GP Online / HSJ / NB Medical	<ul style="list-style-type: none"> <li>• <a href="#">GP Online</a></li> <li>• <a href="#">HSJ</a></li> <li>• <a href="#">Pulse Today</a></li> </ul>
Primary Care Update / PCC / PPP	<ul style="list-style-type: none"> <li>• <a href="#">Public Policy Projects News</a></li> <li>• <a href="#">Primary Care Bulletin</a></li> </ul>

*Continuation of News & Views*

Health Care Leaders Newsletters	
Kings Fund	<ul style="list-style-type: none"> <li>• <a href="#">The Kings Fund</a></li> </ul>
World Health Organisation	<ul style="list-style-type: none"> <li>• <a href="#">WHO</a></li> <li>• <a href="#">OpenWHO</a></li> </ul>
IHCT / CCG / STP / Healthier Futures	<ul style="list-style-type: none"> <li>• <a href="#">Black Country &amp; West Birmingham CCG</a></li> <li>• <a href="#">Dudley Integrated Health and Care</a></li> <li>• <a href="#">Home :: Black Country Healthcare NHS Foundation Trust</a></li> </ul>
NHSI / NHSE	
University / Student Nurses	
Medisa / Univadis / Geeky Medics / GP Notebook / Medscape	<ul style="list-style-type: none"> <li>• <a href="#">Medisa</a></li> <li>• <a href="#">Geeky Medics</a></li> <li>• <a href="#">Medscape Nurses</a></li> <li>• <a href="#">GP Notebook</a></li> </ul>
Nurse Guidelines	<ul style="list-style-type: none"> <li>• <a href="#">Guidelines in Practice – supporting implementation of best practice</a></li> </ul>
The Health Foundation	<ul style="list-style-type: none"> <li>• <a href="#">The Health Foundation</a></li> </ul>
The Health Care Leaders Update	<ul style="list-style-type: none"> <li>• <a href="#">Health Care Leader News</a></li> </ul>
Practice Index	
Innovation Agency	<ul style="list-style-type: none"> <li>• <a href="#">Innovation Agency Exchange</a></li> <li>• <a href="#">June 2022 newsletter (campaign-archive.com)</a></li> </ul>

*Continuation News & Views*

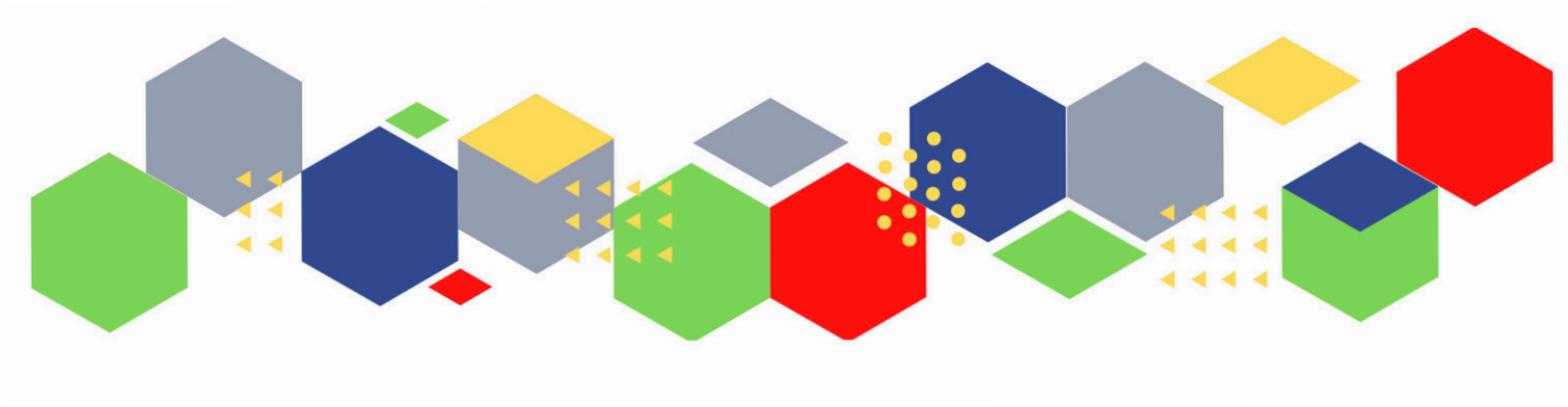
RCN	<ul style="list-style-type: none"> <li>• <a href="#">RCN</a></li> </ul>
Nursing in Practice / Nursing Standard / Independent Nurse	<ul style="list-style-type: none"> <li>• <a href="#">Nursing Times</a></li> <li>• <a href="#">Practice Nursing - Explore our brand new website</a></li> <li>• <a href="#">Journal of General Practice Nursing</a></li> <li>• <a href="#">Independent Nurse</a></li> </ul>
QNI	<ul style="list-style-type: none"> <li>• <a href="#">QNI</a></li> <li>• <a href="#">Talk To Us © – The Queen's Nursing Institute (qni.org.uk)</a></li> </ul>
NMC	<ul style="list-style-type: none"> <li>• <a href="#">NMC</a></li> <li>• <a href="#">New post-registration standards published; consultation on education standards (news-nmc.org.uk)</a></li> </ul>
CMO / CNO	
Nice	<ul style="list-style-type: none"> <li>• <a href="#">NICE</a></li> <li>• <a href="#">REMINDER: NICE News for Health and Social Care   July 2022 (mailchi.mp)</a></li> </ul>
RCGP / BMA / The Lancet	<ul style="list-style-type: none"> <li>• <a href="#">The Lancet</a></li> <li>• <a href="#">British Medical Journal</a></li> <li>• <a href="#">Royal College of General Practitioners</a></li> </ul>
Midlands Academic Health Science Network	<ul style="list-style-type: none"> <li>• <a href="#">WMAHSN Network</a></li> </ul>
Healthwatch	<ul style="list-style-type: none"> <li>• <a href="#">Healthwatch</a></li> </ul>
Other	<ul style="list-style-type: none"> <li>• <a href="#">Patients Association</a></li> <li>• <a href="#">UCLPartners Proactive Care Frameworks - Promoting CVD Prevention (mailchi.mp)</a></li> </ul>

Free Training / Webinars / Meetings / CPD	
Development / Information and Knowledge	<ul style="list-style-type: none"> <li>• <a href="#">Red Whale Training</a></li> <li>• <a href="#">Issues &amp; Answers</a></li> <li>• <a href="#">Issues &amp; Answers - Long Covid Broadcasts</a></li> <li>• <a href="#">Nursing Events</a></li> </ul>
Free to RCN	<ul style="list-style-type: none"> <li>• <a href="#">RCNi events   RCNi</a></li> </ul>
MIMMs Learning	
Future Proof Health Training	<ul style="list-style-type: none"> <li>• <a href="#">News &amp; Events</a></li> </ul>
BCWB Training Hub	
Evidence based care	
Eventbrite	
e-Learning for Health	
YouTube	<ul style="list-style-type: none"> <li>• <a href="#">NHS England</a></li> <li>• <a href="#">Black Country Healthcare - YouTube</a></li> </ul>
Blogs/Vlogs	
Area Bulletins	



*Continuation of Free Training / Webinars / Meetings / CPD*

Podcasts	<ul style="list-style-type: none"> <li>• <a href="#">The Nursing Handover Podcast</a></li> <li>• <a href="#">Nursing Standard Podcasts</a></li> <li>• <a href="#">Nursing Matters</a></li> <li>• <a href="#">Welcome to the BJN Podcast</a></li> <li>• <a href="#">Cygnet Health Care Podcast</a></li> <li>• <a href="#">EBN podcast</a></li> <li>• <a href="#">This Is Nursing</a></li> <li>• <a href="#">Teach me, I'm a Nurse</a></li> <li>• <a href="#">Past Caring</a></li> <li>• <a href="#">RCGP eLearning podcast</a></li> <li>• <a href="#">The BMJ Podcast</a></li> <li>• <a href="#">Primary Care Network podcasts</a></li> <li>• <a href="#">The Professional Support Unit's Pandemic Podcast</a></li> <li>• <a href="#">The Next GenCast</a></li> </ul>
Research	<ul style="list-style-type: none"> <li>• <a href="#">Science Daily</a></li> <li>• <a href="#">Multimorbidity / multiple long-term conditions (MLTC)</a></li> <li>• <a href="#">National Institute for Health and Care Research</a></li> <li>• <a href="#">Research England £8 billion investment in England's universities – UKRI</a></li> </ul>
Freebies	<ul style="list-style-type: none"> <li>• <a href="#">Blue Light Card</a></li> </ul>
Other	



Thank you for reading Future Proof Health's weekly news!

If you missed past issues, please click [here](#) to view them

More information can be found on our website, [here](#)

Don't forget to like us on [Facebook](#) & Follow us on [Twitter](#)

