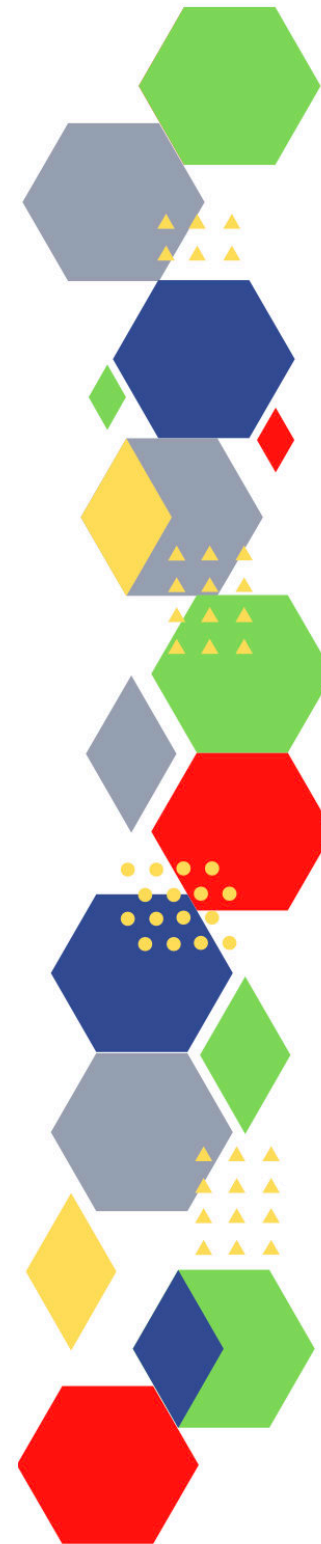


Future Proof Health Presents

Weekly News

16th September 2021



Communication	
Communication with Patients	
Communication within Teams	
People and Personal Development	
Personal / HR & People Development / Leadership	<ul style="list-style-type: none"> • Job Vacancies • Accountability and delegation in practice
Health, Safety & Security	
	<ul style="list-style-type: none"> • NPSA • CPD for nurses
CQC	<ul style="list-style-type: none"> • GP mythbusters • CQC update for adult social care providers • The devil is in the detail – preparing for CQC success
Vaccines & Medications	<ul style="list-style-type: none"> • Protocol for ordering, storing and handling vaccines
Drug / Device Alerts (MHRA)	<ul style="list-style-type: none"> • The use and regulation of pulse oximeters (information for healthcare professionals)
Antibiotic steward-ship / Anti-microbial resistance	<ul style="list-style-type: none"> • MRSA, MSSA, Gram-negative bacteraemia and CDI: quarterly report
Emergency Situations	<ul style="list-style-type: none"> • The updated National Early Warning Score and its use with suspected Sepsis • Resuscitation Council UK
Infection Control	<ul style="list-style-type: none"> • MRSA bacteraemia: monthly data by location of onset • MSSA bacteraemia: monthly data by location of onset • E. coli bacteraemia: monthly data by location of onset • P. aeruginosa bacteraemia: monthly data by location of onset • Klebsiella species bacteraemia: monthly data by location of onset • C. difficile infection: monthly data by prior trust exposure

Safe Guarding	<ul style="list-style-type: none"> • Female genital mutilation (FGM) • PREVENT • Child protection system in the UK • Safeguarding Adults • Safeguarding children: detailed information • Dudley Financial Abuse Alliance - September 2021
Practice Policies	
Audit	
Information Governance	<ul style="list-style-type: none"> • Guide to Data Protection
Quality & Service Improvement	
Quality & Service	<ul style="list-style-type: none"> • The PRSB • General Practice Assessment Questionnaire (GPAQ) • Healthwatch • NHS Five Year Forward View • General Practice Forward View • NMC • Dr Jon Griffiths • What are GPs actually doing?
Improvement	
New Roles in General Practice	<ul style="list-style-type: none"> • Standards for nursing associates
Personal Practice & Development	
NHS Self Care & Resilience	<ul style="list-style-type: none"> • Wellbeing support line for health and social care workers • Our Frontline • Staff mental health and wellbeing hubs
ICS / PCN	<ul style="list-style-type: none"> • DELIVERING TOGETHER FOR RESIDENTS – A JOINT SOLACE & NHS REPORT • Clinical and care professional leadership in integrated care systems
Leadership	

Personalised Care	
Personalised Care / Self Care	<ul style="list-style-type: none"> • Self care forum • Personalised Care Institute
Social Prescribing / Health Coaching	<ul style="list-style-type: none"> • Personalised care • National Academy for Social Prescribing • Regional Leadership for Personalised Care programme • Self Care Forum • Accelerating innovation in social prescribing
Group consultation	<ul style="list-style-type: none"> • Group Consultation Webinars
Working Differently	<ul style="list-style-type: none"> • Colne Valley Low Carb Diet Project • Working together for better lives: case studies
Equality & Diversity	
Equality & Diversity	<ul style="list-style-type: none"> • Public Health Profiles
Inclusion Health	
Poverty / Homelessness	<ul style="list-style-type: none"> • Crisis • The case for scaling up Housing First in England
Migrant Health	<ul style="list-style-type: none"> • Afghan relocation and resettlement schemes Advice for primary care
Thrive Into Work	
Health Inequalities	<ul style="list-style-type: none"> • RCGP Health Inequalities • Health Inequalities Webinar Series • Anchor institutions: using resources and influence to reduce health inequalities

Health & Well-Being	
Health & Well-Being	<ul style="list-style-type: none"> • Colne Valley Low Carb Diet Project
Assessment	
Obtaining samples	
QOF/PHOF/DES/LES	<ul style="list-style-type: none"> • Primary care network directed enhanced service
Management of Emergency Situations	
Management of Emergency Situations	<ul style="list-style-type: none"> • The updated National Early Warning Score and its use with suspected Sepsis
Red Flags	
Sepsis	<ul style="list-style-type: none"> • Sepsis: recognition, diagnosis and early management • Sepsis guidance implementation advice for adults • Sepsis in Children • Sepsis Trust • RCGP: Sepsis
Therapeutic Monitoring	
Syndromic surveillance	<ul style="list-style-type: none"> • Syndromic surveillance: systems and analyses
Role Specific	
Cervical Cytology	<ul style="list-style-type: none"> • Guide to the interim assessment
Ear Care	
Wound Management	<ul style="list-style-type: none"> • WOUNDEXPO2021
Minor Surgery	

Health Promotion / Health Screening	
Health Promotion / Population Health	<ul style="list-style-type: none"> • Better Health • EXi App • Campaign launched to help public get healthy this summer
Health Screening	
PHE	<ul style="list-style-type: none"> • Knowledge & Library Services • Campaign Resources • Public Health Profiles • Health Publications • Public health specialist capacity
NHS Health Check	<ul style="list-style-type: none"> • NHS Health Check
NOIDS / PHE Surveillance / Syndromic Surveillance	<ul style="list-style-type: none"> • Notifications of infectious diseases (NOIDs) • National norovirus and rotavirus bulletin: management information • COVID-19 vaccine surveillance reports • NHS Health Check quarterly statistics: April to June 2021 offers and uptake • Excess mortality in England: weekly reports • Excess mortality in English regions • Wider impacts of COVID-19 on health monitoring tool • Palliative and end of life care profiles: September 2021 data update • Dementia profile updates • Suicide prevention profile updates • MRSA, MSSA, Gram-negative bacteraemia and CDI: quarterly report • Weekly all-cause mortality surveillance: 2021 to 2022 • Syndromic surveillance: systems and analyses • Sexually transmitted infections (STIs): annual data tables
Addiction/Smoking	

Immunisation / Travel Health

- [Vaccinations and infections](#)
- [Joint Committee on Vaccination and Immunisation](#)
- [Immunisation against infectious disease](#)
- [West Midlands Immunisation Service](#)
- [Immunisation information for Health Care Services within the West Midlands area](#)
- [Vaccination of individuals with uncertain or incomplete immunisation status](#)

Flu	<ul style="list-style-type: none"> • Flu and flu vaccinations
Children	<ul style="list-style-type: none"> • Ensuring every child gets the best start in life – starting with vaccine protection
Adults	<ul style="list-style-type: none"> • Immunisation patient group direction (PGD) templates • Shingles immunisation programme: introduction of Shingrix® letter
Vaccine Update	<ul style="list-style-type: none"> • Vaccine update
Travel Health	<ul style="list-style-type: none"> • Travel Health Pro • Fit for Travel • Travel Health • Jane Chiodini
Covid Vaccine	<ul style="list-style-type: none"> • UK Not Seeing Any 'Major Breakdown' in COVID Vaccine Protection: Expert • COVID-19 vaccine surveillance reports • Consultation on mandatory vaccination for frontline health and care staff

Mental Health / Learning Disability / Disability	
Mental Health	<ul style="list-style-type: none"> • Mental Health • Mental Health UK • Mind • Place2b • Rethink Mental Illness • Young Minds • Every Mind Matters • Calm • Headspace • Suicide prevention profile updates
Learning Disability	<ul style="list-style-type: none"> • Learning Disabilities • Learning Disability England • Mencap • Bild • Autism • Home For Good: Successful community support for people with a learning disability, a mental health need and autistic people • QOF QI - implementation of 'care of people with learning disabilities' module • NHS appoints national director of learning disability and autism
Disability	<ul style="list-style-type: none"> • Disability Rights UK • Disability Matters
Family Planning & Sexual Health	
Family Planning	<ul style="list-style-type: none"> • NEXPLANON® contraception
Reproductive	<ul style="list-style-type: none"> • Tommys
Sexual Health	<ul style="list-style-type: none"> • Sexually transmitted infections (STIs): annual data tables • National chlamydia screening programme (NCSP): data tables • Sexual and Reproductive Health Profiles
Maternity / Neonate health	<ul style="list-style-type: none"> • Improving equity and equality in maternity and neonatal care • Prospective parents given more choice over when to start a family

From Cradle to...

<p>Infant Health</p>	<ul style="list-style-type: none"> • Tommys • First Steps Nutrition Trust • Bliss • Best start in life and beyond Improving public health outcomes for children, young people and families
<p>Child Health</p>	<ul style="list-style-type: none"> • Unicef • Health Professional Academy • Premature Babies • Child and Maternal Health • Women and Child First • Child Health Information Services • Place2b • Childhood eczema • Covid-19: Risks of severe illness in children shown to be very low • Using video consultations for children and young people • The impact of indoor air pollution
<p>Adolescent Health</p>	<ul style="list-style-type: none"> • Adolescent Health Programme • Society for Adolescent Health and Medicine • Young Minds • Schools asked to support survey on Smoking Drinking and Drug Use among young people in England
<p>Mens Health</p>	

Women's Health	<ul style="list-style-type: none"> • Well Spring • HRT and menopause in the 21st century • Trichomoniasis (in females)
Trans / Non-binary Health / LGBTQ+	<ul style="list-style-type: none"> • Supporting LGBT+ people around bereavement • GM LGBTQ+ COMMUNITY FUND
Veterans Health	<ul style="list-style-type: none"> • The first call for help takes courage
The Older Population	<ul style="list-style-type: none"> • BGS
Carers	<ul style="list-style-type: none"> • The Care Provider Alliance • Skills for Care • The Care Workers' Charity • Adult Social Care Update • Enhanced Health in Care Homes: primary care networks and community health • Build Back Better: Our Plan for Health and Social Care • Social care reform and what it means for our workforce • Social Care Reform - Stakeholder Folder • Making vaccination a condition of deployment in older adult care homes • REAL Centre Health and social care funding to 2024/25 • Vaccination as a condition of deployment • Record £36 billion investment to reform NHS and Social Care • Making vaccination a condition of deployment in the health and wider social care sector • How can I get involved on Social Care Day of Remembrance and Reflection? • Flu immunisation for social care staff
Complex Needs	

Care of Patients with Long Term Conditions

Care of Patients with Long Term Conditions	
LTC	
Diabetes & Pre-Diabetes	<ul style="list-style-type: none"> • AZ Medical and Educational Goods and Services in Diabetes • Mumoactive • The mySugr App
Respiratory	<ul style="list-style-type: none"> • Spirometry: step by step • ARTP • British Lung Foundation • The Primary Care Respiratory Society
COPD	<ul style="list-style-type: none"> • Right Breathe
Asthma	<ul style="list-style-type: none"> • FeNO - Fractional exhaled nitric oxide - for the diagnosis and management of Asthma • Asthma UK • Asthma: diagnosis, monitoring and chronic asthma management • GINA 2021: the missing pieces in the childhood asthma puzzle • GINA: Interim Guidance About COVID-19 & Asthma
Hypertension	<ul style="list-style-type: none"> • British Heart Foundation • Blood Pressure UK • Hypertension in adults: diagnosis and management • Hypertension in adults: diagnosis and treatment
CVD/AF	<ul style="list-style-type: none"> • QRISK®3-2018 risk calculator • Charity warns heart surgery waiting times could rise more than 40% by next spring without new funding • Heart Rhythm Alliance • CVD risk assessment and management • Health matters: preventing cardiovascular disease • Fast Five Quiz: Angina • Introducing innovation to the lipid pathway using a Population Health Management approach

<i>Continuation of Long Term Conditions</i>	
Heart Failure	<ul style="list-style-type: none"> • British Heart Foundation
Cancer / Oncology	<ul style="list-style-type: none"> • Surviving Thyroid Cancer • Help Us Help You - Lung Cancer Symptoms • Becca Breast Cancer Support App • Breast Cancer Now • MoleCare App
Chronic Kidney Disease	<ul style="list-style-type: none"> • Atypical haemolytic uraemic syndrome (HUS)
Liver Disease	<ul style="list-style-type: none"> • British Liver Trust
Neurological Conditions	<ul style="list-style-type: none"> • The Brain Tumour Charity
Musculoskeletal Conditions	<ul style="list-style-type: none"> • Rheumatology • National Axial Spondyloarthritis Society • Musculoskeletal health
Blood Disorders	<ul style="list-style-type: none"> • Blood Cancer • Thalassaemia • ITP • Haemophilia • UK MDS Forum • Save a life. Give plasma. • Diagnosis and management of pernicious anaemia • PERNICIOUS ANAEMIA SOCIETY
G.I	
ENT	
G.U	

Continuation of Long Term Conditions

<p>Endocrine Disorders / Metabolic Disorders</p>	<ul style="list-style-type: none"> • Endocrinology • Turner Syndrome Support Society • Thyroid Eye Disease • British Thyroid Foundation • Thyroid UK • Pituitary • Addisons Disease • Parathyroid UK • The Royal Osteoporosis Society • Metabolic Support UK • Diagnosing and managing Addison's disease in primary care • Conn's syndrome
<p>Frailty</p>	<ul style="list-style-type: none"> • Recognising frailty • Identifying frailty • CLINICAL FRAILTY SCALE
<p>Dementia</p>	<ul style="list-style-type: none"> • Dementia UK • Understanding dementia • Artificial intelligence brain scan trial will help clinicians diagnose dementia in a day • My House of Memories - NHS App • Dementia profile updates

Continuation of Long Term Conditions

Dermatology

- [British Association of Dermatologists](#)
- [Eczema](#)
- [The British Skin Foundation](#)
- [Acne vulgaris: management](#)
- [The Primary Care Dermatology Society](#)
- [Acne.org](#)
- [Allergy UK](#)
- [Urticaria](#)
- [Hives](#)
- [Sunburn](#)
- [Causes of cancer and reducing your risk](#)
- [What is Rosacea?](#)
- [Rosecea](#)
- [Herpes.org](#)
- [Shingles](#)
- [Fungal Skin Infection - Foot](#)
- [The Psoriasis Association](#)
- [Psoriasis](#)
- [Melanoma](#)
- [Skin Health Information](#)
- [British Association of Plastic Reconstructive and Aesthetic Surgeons](#)
- [Warts and verrucae](#)

<i>Continuation of Long Term Conditions</i>	
Allergy / Auto-immune / Genetic Conditions	<ul style="list-style-type: none"> • Allergy UK • Rheumatology • Addisons Disease • Cystinosis diagnosis and co-ordination of management
Obesity	<ul style="list-style-type: none"> • Obesity UK
Pain Management	<ul style="list-style-type: none"> • Pain Concern
Multi-Morbidity	<ul style="list-style-type: none"> • Multimorbidity • Multimorbidity / multiple long-term conditions (MLTC)
Minor Illness / First Contact Assessment	
Other	<ul style="list-style-type: none"> • Ultra Rare Disease Disorders And Disabilities Foundation • Atlas of Variation • MyCognition Home - NHS App
End of Life Care	
End of Life Care	<ul style="list-style-type: none"> • Palliative and End of Life Care Profiles
Covid-19	
Covid-19	<ul style="list-style-type: none"> • Covid Live • Coronavirus Statistics • Covid-19: Risks of severe illness in children shown to be very low • Wider impacts of COVID-19 on health monitoring tool
Long Covid	<ul style="list-style-type: none"> • Supporting your recovery after COVID-19 • Nursing in Practice Long Covid Special • Information to Support Your Covid Recovery • Your COVID recovery – Social Pack
Covid Response / Recovery	<ul style="list-style-type: none"> • Additional £5.4 billion for NHS COVID-19 response over next 6 months • Extra Funding for NHS to Clear COVID Backlog 'Must Be Followed Up' • The NHS Long Term Plan and COVID-19

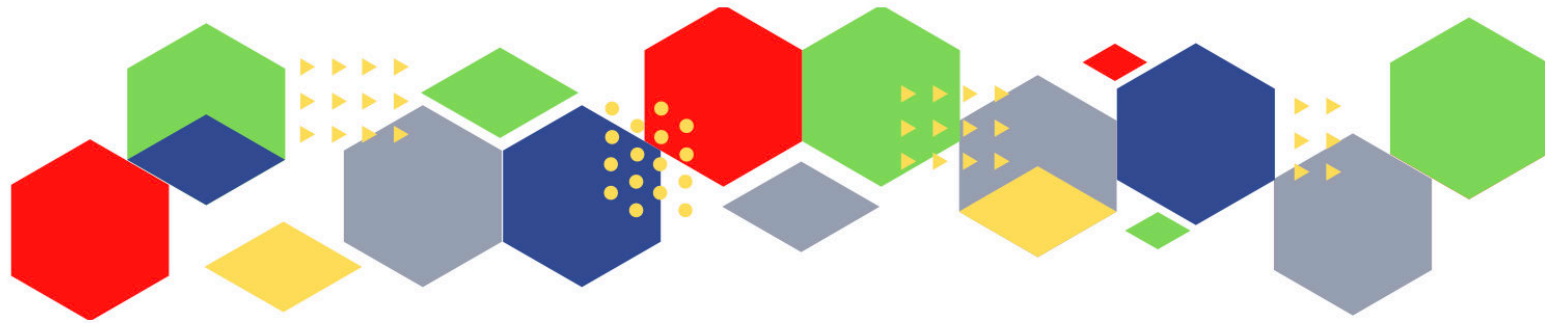
News & Views	
Digital News / Remote Consultations	<ul style="list-style-type: none"> • Digital Health News Webinars • Digital Health News • The Digital Health Autumn Leadership Summit • COVID-19 and the digital divide • Innovation and new technology to help reduce NHS waiting lists
PSNC News	<ul style="list-style-type: none"> • 10th September • 14th September
60 Second GP / Pulse / GP Online / HSJ	<ul style="list-style-type: none"> • 60 Second GP • GP Online • HSJ • Pulse Today
Primary Care Update / PCC	<ul style="list-style-type: none"> • Primary Care Bulletin
Kings Fund	Weekly News / Health Management and Policy Alert / Health and Well Being Bulletin / Digital Health Digest / Events Update
World Health Organisation	<ul style="list-style-type: none"> • WHO
Midlands Academic Health Science Network	
Healthwatch	<ul style="list-style-type: none"> • Healthwatch • COVID-19: What can pharmacists learn from people's experiences of services?
Black Country Bulletins	

<i>Continuation News & Views</i>	
IHCT / CCG / STP / Healthier Futures	<ul style="list-style-type: none"> • Healthier Futures • Black Country & West Birmingham CCG • Dudley Integrated Health and Care
University / Student Nurses	
Medisa / Univadis / Geeky Medics / GP Notebook / Medscape	<ul style="list-style-type: none"> • Univadis Newsletter • Univadis Nurses Headlines • Medisa • Geeky Medics • Medscape Nurses
MIMS	<ul style="list-style-type: none"> • Latest MIMS news
The Health Foundation	<ul style="list-style-type: none"> • The Health Foundation • We are what we eat: Food, health and inequality – with Anna Taylor and Sarah Hickey
The Health Care Leaders Update	<ul style="list-style-type: none"> • Health Care Leader News
PHE	
Innovation Agency	<ul style="list-style-type: none"> • Innovation Agency Exchange
RCN	<ul style="list-style-type: none"> • RCN • RCN Congress 2021 to be held exclusively online • Making sure our College is working on your behalf • Pay campaign latest: members host silent protests over paltry NHS pay deal • RCN Congress: event to focus on nursing education programme • Carol Webley-Brown elected to represent London members on RCN Council • ‘The bill as it stands will not address nursing workforce shortages’ • Why the RCN Forums matter

Continuation News & Views

Nursing in Practice / Nursing Standard / Independent Nurse	<ul style="list-style-type: none"> • Nursing in Practice Bulletin • Practice Nursing Newsletter • Independent News • GPN Bulletin • CPD for nurses
QNI	<ul style="list-style-type: none"> • QNI
NMC	<ul style="list-style-type: none"> • NMC
CMO / CNO	<ul style="list-style-type: none"> • Social care reform and what it means for our workforce
Nice	<ul style="list-style-type: none"> • NICE
RCGP / BMA / The Lancet	<ul style="list-style-type: none"> • The Lancet • British Medical Journal • Royal College of General Practitioners • QOF QI hub • Sexism in medicine • BMA Update
Midlands Academic Health Science Network	<ul style="list-style-type: none"> • WMAHSN Network • Wessex Academic Health Science Network Funding Newsletter • August News Update

Free Training / Webinars / Meetings / CPD	
Development / Information and Knowledge	<ul style="list-style-type: none"> • RCN Events - West Midlands • MIMS Learning Live • THE BEST PRACTICE SHOW – 13-14 October 2021 • FREE Cancer Screening Webinar • Wound Expo • QOF QI - implementation of the 'early cancer diagnosis' module • Continual Professional Development • Virtual Conference 2021 • Inaugural Broadcasts 2021
Area Bulletins	<ul style="list-style-type: none"> • Dudley • Sandwell • Wolverhampton
BCWB Training Hub	<ul style="list-style-type: none"> • Black Country and West Birmingham Training Hub
Research	<ul style="list-style-type: none"> • Science Daily • UK Research and Innovation
Freebies	<ul style="list-style-type: none"> • Blue Light Card
Other	<ul style="list-style-type: none"> • G20 Ministerial Health Declaration published



Thank you for reading Future Proof Health's weekly news!
If you missed past issues, please click [here](#) to view them

More information can be found on our website, [here](#)

Don't forget to like us on [Facebook](#) & Follow us on [Twitter](#)

