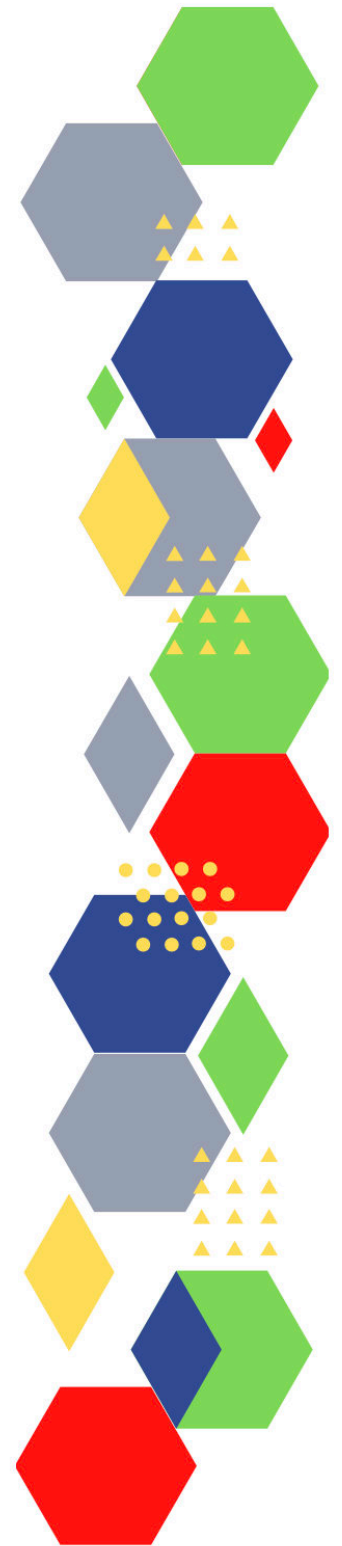
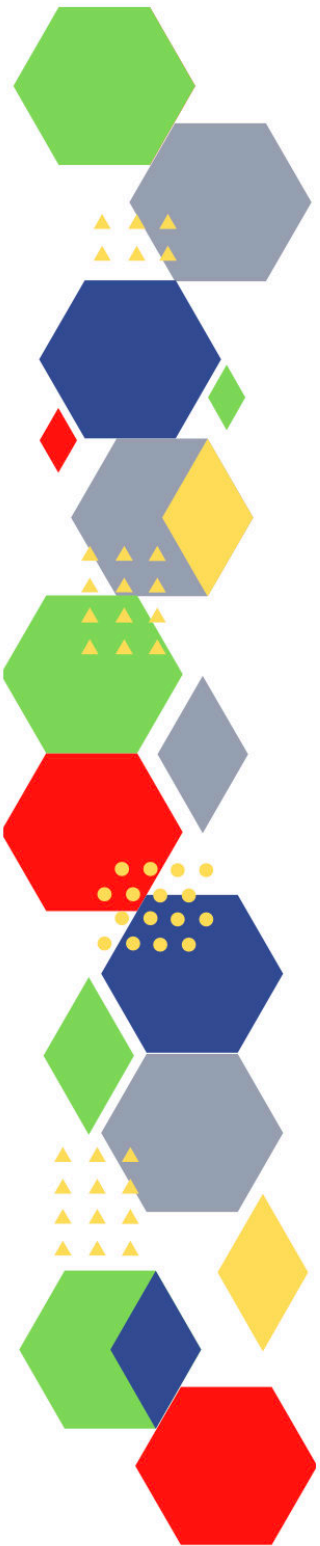




Future Proof Health Presents

Weekly News

8th April 2022



Communication	
Communication with Patients	
Communication within Teams	
Consent	<ul style="list-style-type: none"> • Gillick competency and Fraser guidelines • CONSENT POLICY • ReSPECT for healthcare professionals
People and Personal Development	
Personal / People Development / Leadership	<ul style="list-style-type: none"> • Accountability and delegation in practice
NHS Employers / HR / NHS Pension	<ul style="list-style-type: none"> • NHS Employers • Pensions Online
Health, Safety & Security	
<ul style="list-style-type: none"> • NPSA • Control of Substances Hazardous to Health (COSHH) • HSE Weekly Digest eBulletin 	
Gov UK - NHS	
CQC	<ul style="list-style-type: none"> • GP mythbusters • Examples of outstanding practice for GPs • CQC update for primary medical and dental services • CQC update for adult social care providers
MIMS	<ul style="list-style-type: none"> • Prescribing Update
Antibiotic steward-ship / Anti-microbial resistance	
Drug / Device Alerts (MHRA)	

Vaccines / Medications / Prescribing	<ul style="list-style-type: none"> • Protocol for ordering, storing and handling vaccines • A Competency Framework for all Prescribers • Non-medical prescribing • The Human Medicines Regulations 2012 • RCN - Non-medical prescribers • Royal Pharmaceutical Society • Standards for prescribing • Clinical Negligence Scheme for General Practice • RCP and British Pharmacological Society report calls for personalised testing for safety and effectiveness of common medicines to be offered throughout the NHS
Emergency Situations	<ul style="list-style-type: none"> • The updated National Early Warning Score and its use with suspected Sepsis • Resuscitation Council UK
Infection Control / Infection Statics	
Safe Guarding	<ul style="list-style-type: none"> • Female genital mutilation (FGM) • PREVENT • Child protection system in the UK • Safeguarding Adults • Safeguarding children: detailed information
Practice Policies	
Audit	
Information Governance / Record Keeping	<ul style="list-style-type: none"> • Guide to Data Protection • Supporting general practice – Medical record keeping
Quality & Service Improvement	
Quality, Service & Improvement	<ul style="list-style-type: none"> • The PRSB • General Practice Assessment Questionnaire (GPAQ) • Healthwatch • NHS Five Year Forward View • General Practice Forward View • NMC • Dr Jon Griffiths • NHS Confed

Roles in General Practice	<ul style="list-style-type: none"> • Standards for nursing associates • GP mythbuster 57: Health Care Assistants in General Practice
Revalidation	
Personal Practice & Development	
Practice Management	<ul style="list-style-type: none"> • Institute of General Practice Management • Practice Index
NHS Self Care & Resilience	<ul style="list-style-type: none"> • Samaritans • Mental Health at work • Calm • Supporting our NHS people • The Hub :: Black Country Healthcare NHS Foundation Trust • How to cope with anxious moments RCN Magazines • Interactive results and dashboards • Ramadan & Eid Guidance
Practice Transformation	
Future of NHS / General Practice	<ul style="list-style-type: none"> • NHS England » Implementing the 2022/23 GP Contract: changes to personal medical services and alternative provider medical services contracts • CHE Research Paper 185 - Centre for Health Economics, University of York • UCLPartners Proactive Care Frameworks - Promoting CVD Prevention • Public satisfaction with the NHS and social care in 2021 • Health and Social Care Levy to raise billions for NHS and social care • £500 million to develop the adult social care workforce
ICS / PCN	<ul style="list-style-type: none"> • Integrated care communications toolkit
QOF / PHOF / DES / LES / NHS Contract / CQRS / CQUIN	<ul style="list-style-type: none"> • NHS England » Primary care networks: network contract directed enhanced service from April 2022 – cover note • NHS England » GP Contract • NHS England » 2022/23 CQUIN • General practice contract arrangements in 2022/23
Leadership	<ul style="list-style-type: none"> • Leadership Academy

Personalised Care	
Personalised Care / Self Care / Social Prescribing / Health Coaching	<ul style="list-style-type: none"> • Self Care forum • Personalised Care Institute • Personalised care • Social Prescribing Academy • Self Care Forum Newsletter
Group consultation	
Working Differently	
Shared Decision Making	
Equality & Diversity	
Equality & Diversity	<ul style="list-style-type: none"> • Public Health Profiles
Inclusion Health	<ul style="list-style-type: none"> • Health Creation Academic Network • INCLUSION HEALTH SELF ASSESSMENT TOOL • GP ACCESS CARDS
Poverty / Homelessness	<ul style="list-style-type: none"> • Crisis • This is Poverty
Population Health / Health Communities	<ul style="list-style-type: none"> • New review launched into vitamin D intake to help tackle health disparities
Thrive Into Work	<ul style="list-style-type: none"> • Thrive into Work • Thrive into Work Referral form
Health Inequalities	
Trans / Non-binary Health / LGBTQ+	<ul style="list-style-type: none"> • LGBT Foundation • NHS population screening: information for trans and non-binary people • Cervical screening for trans men and/or non-binary people

Migrant / Refugee Health	<ul style="list-style-type: none"> • THE REFUGEE & MIGRANT CENTRE • TRANSLATED HEALTH INFORMATION FOR PATIENTS • SAFE SURGERIES QI PROJECT FOR GP TRAINEES • Entitlements to Primary HealthCare • RESOURCES AND TRAINING • Ukraine: migrant health guide
Traveller / Gypsy / Romany Health	
Veterans Health	<ul style="list-style-type: none"> • The first call for help takes courage
Management of Emergency Situations	
Management of Emergency Situations	<ul style="list-style-type: none"> • The updated National Early Warning Score and its use with suspected Sepsis
111	
Red Flags	<ul style="list-style-type: none"> • Supporting general practice – Common pitfalls
Sepsis	<ul style="list-style-type: none"> • Sepsis: recognition, diagnosis and early management • Sepsis guidance implementation advice for adults • Sepsis in Children • Sepsis Trust • RCGP: Sepsis • quick SEPSIS RELATED ORGAN FAILURE ASSESSMENT
Therapeutic Monitoring	
OSCE	<ul style="list-style-type: none"> • Geeky Medics • Abdominal Examination - Demonstration - YouTube • Cardiovascular Examination - Demonstration - YouTube • Respiratory Examination - Demonstration - YouTube • Physical Diagnosis Skills - University of Washington School of Medicine • Mythbuster: 'I've got my usual cough – it's gone to my chest with green phlegm, so I need antibiotics'

Role Specific	
Cervical Cytology	<ul style="list-style-type: none"> • Guide to the interim assessment • British Association for Cytopathology • Lab Tests Online • Cervical Screening campaign Campaign Resource Centre
Ear Care	<ul style="list-style-type: none"> • Ear Care Centre • RNID
Wound Management	<ul style="list-style-type: none"> • Microworld • Tissue Viability Society • The BLS • Wounds on Thursdays
Minor Surgery	
Obtaining Samples / Results	<ul style="list-style-type: none"> • Lab Tests Online
Health Promotion / Health Screening	
Health Promotion / Population Health	<ul style="list-style-type: none"> • Better Health • EXi App • A matter of life and death - The Health Foundation
Health Screening	<ul style="list-style-type: none"> • PHE Screening
PHE/OHID	<ul style="list-style-type: none"> • Knowledge & Library Services • Campaign Resources • Public Health Profiles • Health Publications • Health Profile for England 2021
NHS Health Check	<ul style="list-style-type: none"> • NHS Health Check
NOIDS / PHE Surveillance / Syndromic Surveillance	<ul style="list-style-type: none"> • Notifications of infectious diseases (NOIDs)

Addiction/Smoking	<ul style="list-style-type: none"> • Drink Coach • Stop smoking interventions and services • Trending Clinical Topic: Alcohol
Immunisation / Travel Health	
<ul style="list-style-type: none"> • Vaccinations and infections • Joint Committee on Vaccination and Immunisation • Immunisation against infectious disease • West Midlands Immunisation Service • Immunisation information for Health Care Services within the West Midlands area • Vaccination of individuals with uncertain or incomplete immunisation status • WHO vaccine-preventable diseases: monitoring system. 2020 global summary • The Foundations of Immunization: What, Who, When and Why? • Winter Vaccination - Prime phase: Social Media content calendar and assets - 2021 • Measles outbreak training • Vaccine Safety Basics • HPV vaccination: guidance for healthcare practitioners • HPV vaccination programme for men who have sex with men (MSM) • Changing to a 2 dose NHS HPV vaccination schedule letter 	
Flu	<ul style="list-style-type: none"> • Flu and flu vaccinations • The national influenza immunisation programme 2021 to 2022 • Flu vaccines for the 2021 to 2022 season poster • Appendix C: Flu vaccinator competency assessment tool • Healthcare assistants and flu vaccinations • Flu Campaign Resources 2021/22 • National flu and COVID-19 surveillance reports published

Continuation of Immunisation / Travel Health

Covid Vaccine	<ul style="list-style-type: none"> • Greenbook COVID-19 chapter 14a • Updates made to the COVID-19 vaccination elearning programme • HEE e-LfH COVID-19 vaccination programme launches hit 2 million • COVID-19 Vaccine Moderna e-learning now available • GP COVID-19 vaccine dashboard • Coronavirus (COVID-19) vaccines adverse reactions • COVID-19 vaccination: resources for children and young people aged 12 to 17 years • The Covid-19 vaccination programme • A guide to the spring booster for those aged 75 years and older and older residents in care homes • Coronavirus » Supporting COVID-19 vaccine uptake during Ramadan • Vaccine Confidence Toolkit - Doctors of the World
Children	<ul style="list-style-type: none"> • Cover of vaccination evaluated rapidly (COVER) programme 2021 to 2022: quarterly data
Adults	<ul style="list-style-type: none"> • Immunisation patient group direction (PGD) templates • Shingles immunisation programme: introduction of Shingrix® letter • Training and Resources – ZOSTAVAX®
Vaccine Update	<ul style="list-style-type: none"> • Vaccine update • Vaccine Update Index
PGD	
Travel Health	<ul style="list-style-type: none"> • Travel Health Pro • Fit for Travel • Travel Health • Jane Chiodini • Corona.Help

Mental Health / Learning Disability / Disability	
Mental Health	<ul style="list-style-type: none"> • Mental Health • Mental Health UK • Mind • Place2b • Rethink Mental Illness • Young Minds • Every Mind Matters • Calm • Headspace • We Can Talk • Get Your Mind Plan • Feeling low? • Better Health - Every Mind Matters - Resources • ZSA Training • Psychiatry - Medscape • Screening for depression in primary care • NHS England » Assurance Engagement of the Mental Health Investment Standard – briefing for clinical commissioning groups • Government must take effective action to prevent poor mental health among young Black men, says new Centre for Mental Health report
Learning Disability	<ul style="list-style-type: none"> • Learning Disabilities • Learning Disability England • Mencap • Bild • Autism • NHS England » An early integrated pathway for autism
Disability	<ul style="list-style-type: none"> • Disability Rights UK • Disability Matters

From Cradle to...

<p>Infant Health</p>	<ul style="list-style-type: none"> • Tommys • First Steps Nutrition Trust • Bliss • NHS App - Baby Buddy • NHS App - Peanut • ICON Toolkit • NHS England » NHS develops world-first bedside genetic test to prevent babies going deaf
<p>Child Health</p>	<ul style="list-style-type: none"> • Unicef • Health Professional Academy • Premature Babies • Child and Maternal Health • Women and Child First • Child Health Information Services • Place2b • Childhood eczema • Childhood asthma • Paediatrics Research & Reports • The World Health Organisation has created <u>guidance for the management of common conditions which primary health care providers encounter when they care for children and adolescents</u>. It also includes information on conditions generally managed by specialists so that primary health care providers can coordinate the routine care of children and adolescents with complex or chronic conditions.
<p>Adolescent Health</p>	<ul style="list-style-type: none"> • Adolescent Health Programme • Society for Adolescent Health and Medicine • Young Minds

Mens Health	<ul style="list-style-type: none"> • Mens Health Forum • Mens Health Month • Mens health.org • Mens Health UK • Men and mental health • Men's Mental Health Awareness • Prostate Cancer UK • Orchid Fighting Male Cancer • Prostate Cancer UK Facebook Page • Men's Voices Event • Movember
Women's Health	<ul style="list-style-type: none"> • Womens Health Concern • Well Being of Women • Coppa Feel • Menopause Matters • The Menopause Charity • Royal College of Obstetricians and Gynaecologists - Guidelines • Pelvic Partnership • CRUK - Womens Cancer • Breast Cancer Now • Foundation for Women's Cancer • Eve Appeal • Ovarian.Org • Jo's Trust • Well Spring • Expert webinar - IOTOD • Managing vulval and vaginal health
The Older Population	<ul style="list-style-type: none"> • BGS • Ageing Better • Government failing to ensure a decent life for older people as pensioner poverty spirals
Young Carers	
Complex Needs	

Carers / Social Care / Care Homes	<ul style="list-style-type: none"> • The Care Provider Alliance • Skills for Care • The Care Workers' Charity • Supporting Adult Carers • Health and Social Care Levy to raise billions for NHS and social care • Adult Social Care Update
Family Planning & Sexual Health	
Family Planning	<ul style="list-style-type: none"> • Faculty of Sexual and Reproductive Healthcare Education and Training
Reproductive	<ul style="list-style-type: none"> • Tommys • Paternal metformin prior to conception increases the risk of birth defects
Sexual Health / Sexual Abuse	<ul style="list-style-type: none"> • Sexual and Reproductive Health Profiles • FSRH Education & Training
Maternity / Neonate health	
Care of Patients with Long Term Conditions	
LTC	<ul style="list-style-type: none"> • Chronic Conditions On Demand
Diabetes & Pre-Diabetes	<ul style="list-style-type: none"> • AZ Medical and Educational Goods and Services in Diabetes • Mumoactive • The mySugr App • Foot Check • Higher risk of poor health in those diagnosed with type 2 diabetes • 2022: 18th National Conference of the Primary Care Diabetes Society • GPnotebook focus on diabetes (contains promotional information) • SGLT2 inhibitors in type 2 diabetes: Recommendations within updated NICE guideline NG28 • New treatment for CKD associated with diabetes • NHS England » NHS runs world-first test into 'sci-fi like' artificial pancreases • Ramadan Compendium British Islamic Medical Association • Stay healthy during Ramadan • NHS England » Lifechanging technology to be rolled out to all type 1 diabetes patients
COPD	<ul style="list-style-type: none"> • Right Breathe

Continuation of Long Term Conditions

Respiratory	<ul style="list-style-type: none"> • Spirometry: step by step • ARTP • British Lung Foundation • The Primary Care Respiratory Society • Lung health care after COVID-19
Asthma	<ul style="list-style-type: none"> • FeNO - Fractional exhaled nitric oxide - for the diagnosis and management of Asthma • Asthma UK • Asthma: diagnosis, monitoring and chronic asthma management • GINA 2021: the missing pieces in the childhood asthma puzzle • GINA: Interim Guidance About COVID-19 & Asthma
Hypertension	<ul style="list-style-type: none"> • British Heart Foundation • Blood Pressure UK • Hypertension in adults: diagnosis and management • Hypertension in adults: diagnosis and treatment • NICE updates hypertension guidance
CVD/AF	<ul style="list-style-type: none"> • QRISK®3-2018 risk calculator • Heart Rhythm Alliance • CVD risk assessment and management • Health matters: preventing cardiovascular disease • Cardiovascular disease: risk assessment and reduction, including lipid modification • The Joint British Societies recommendations on the prevention of Cardiovascular Disease (JBS3) • Lipids, Familial Hypercholesterolaemia (FH) and PCSK9i Guide for EMIS • Subendothelial lipoprotein retention as the initiating process in atherosclerosis: update and therapeutic implications • Tabas I et al. Circulation. 2007 • Inflammation in atherosclerosis • Health matters: preventing cardiovascular disease • Atherosclerosis: The Road Ahead • Glass and Witztum. Cell. 2001 • Davignon, J. (2004) Beneficial Cardiovascular Pleiotropic Effects of Statins. Circulation, 109, III-39-III-43. - References - Scientific Research Publishing • A definition of advanced types of atherosclerotic lesions and a histological classification of atherosclerosis. A report from the Committee on Vascular Lesions of the Council on Arteriosclerosis, American Heart Association • Stary, et al. Circulation. 1995

Continuation of Long Term Conditions

CVD/AF continued	<ul style="list-style-type: none"> • Association Between Lowering LDL-C and Cardiovascular Risk Reduction Among Different Therapeutic Interventions: A Systematic Review and Meta-analysis • Lipid Management Pathway • European Cardiovascular Disease Statistics 2017
Heart Failure	<ul style="list-style-type: none"> • British Heart Foundation • British Society Guidelines • NHS England » Primary care network offers extra support for high-risk group with heart failure and social isolation
Cancer / Oncology	<ul style="list-style-type: none"> • Surviving Thyroid Cancer • Help Us Help You - Lung Cancer Symptoms • Becca Breast Cancer Support App • Breast Cancer Now • MoleCare App • Macmillian • Lack of 'serious effort' on cancer workforce shortages risks reversal of survival rates
Chronic Kidney Disease	<ul style="list-style-type: none"> • Kidney.Org • Kidney Quality Improvement Partnership • NICE guidance - dapagliflozin for treating chronic kidney disease
Liver Disease	<ul style="list-style-type: none"> • British Liver Trust • Liver Research • BRITISH ASSOCIATION FOR THE STUDY OF THE LIVER • LIVErNORTH • LIVER DISEASE AND CIRRHOSIS
Blood Disorders	<ul style="list-style-type: none"> • Blood Cancer • Thalassaemia • ITP • Haemophilia • UK MDS Forum • Save a life. Give plasma. • Diagnosis and management of pernicious anaemia • Haemochromatosis UK
G.I	<ul style="list-style-type: none"> • GIST Cancer UK • Overview PredictSURE IBD and IBDX to guide treatment of Crohn's disease
ENT	

Continuation of Long Term Conditions

G.U	
Neurological Conditions	<ul style="list-style-type: none"> • The Brain Tumour Charity • Narcolepsy.Org • ACNR • NHS England » Headache busting balloons among pioneering treatments rolled out on NHS • Neurology - Medscape
Musculoskeletal Conditions	<ul style="list-style-type: none"> • Rheumatology • National Axial Spondyloarthritis Society • Musculoskeletal health • Musculoskeletal health: 5 year prevention strategic framework • Faculty of Occupational Medicine • Thousands of people set to benefit from first new treatment for osteoporosis for over a decade • Stronger My Way
Endocrine Disorders / Metabolic Disorders	<ul style="list-style-type: none"> • Endocrinology • Turner Syndrome Support Society • Thyroid Eye Disease • British Thyroid Foundation • Thyroid UK • Pituitary • Addisons Disease • Parathyroid UK • The Royal Osteoporosis Society • Metabolic Support UK
Frailty	<ul style="list-style-type: none"> • Recognising frailty • Identifying frailty • CLINICAL FRAILITY SCALE
Dementia	<ul style="list-style-type: none"> • Dementia UK • Understanding dementia • My House of Memories - NHS App • Dementia profile updates • Caring for Carers Dementia Support Group (Tuesdays) • Delirium Champions • Guide to continuing healthcare (CHC) funding - Dementia UK

Continuation of Long Term Conditions

Dermatology	<ul style="list-style-type: none"> • British Association of Dermatologists • Eczema • The British Skin Foundation • Acne vulgaris: management • The Primary Care Dermatology Society • Acne.org • Allergy UK • Urticaria • Hives • Sunburn • Causes of cancer and reducing your risk • What is Rosacea? • Rosecea • Herpes.org • Shingles • Fungal Skin Infection - Foot • The Psoriasis Association • Psoriasis • Melanoma • Skin Health Information • British Association of Plastic Reconstructive and Aesthetic Surgeons • Warts and verrucae
Allergy / Auto-immune / Genetic Conditions	<ul style="list-style-type: none"> • Allergy UK • Rheumatology • Addisons Disease • Primary hypothyroidism – issues in diagnosis and management
Obesity	<ul style="list-style-type: none"> • Obesity UK
Pain Management	<ul style="list-style-type: none"> • Pain Concern • UK career framework for pain nurses
Genomics	
Multi-Morbidity	<ul style="list-style-type: none"> • Multimorbidity • Multimorbidity / multiple long-term conditions (MLTC)

<i>Continuation of Long Term Conditions</i>	
Minor Illness / First Contact Assessment / OSCE	<ul style="list-style-type: none"> • Management of acute otitis media in primary care • OSCE Prep Resources & Lots More
Other / Case Studies	<ul style="list-style-type: none"> • Ultra Rare Disease Disorders And Disabilities Foundation • MyCognition Home - NHS App • The Cold Weather Plan for England
End of Life Care	
End of Life Care	<ul style="list-style-type: none"> • ReSPECT for healthcare professionals • Hospice UK • The 'Special Rules': how the benefit system supports people nearing the end of life
Covid-19	
Covid-19	<ul style="list-style-type: none"> • Covid Live • Coronavirus Statistics • Living with COVID-19 – testing update • NHS expands Covid symptoms list to include runny nose, sore throat and headache • Antibody testing for COVID-19 (SARS-CoV-2 infection) • Government sets out next steps for living with COVID
Long Covid	<ul style="list-style-type: none"> • Supporting your recovery after COVID-19 • Long Covid Toolkit • Long term effects of COVID (Long COVID) • Post-COVID Syndrome (Long COVID) • COVID-19 Yorkshire Rehabilitation Screening Tool • FOM Guidance • Lung health care after COVID-19 • Learning module: treating patients with long Covid
Covid Response / Recovery	

News & Views

Digital News / Remote Consultations	<ul style="list-style-type: none"> • Digital Health News Webinars • Digital Health News • NHS Digital • Digital Boards Two Years On • NHS Accelerated Access Collaborative » The MedTech funding mandate
PSNC News / Pharmacy	<ul style="list-style-type: none"> • National Pharmacy Association • Royal Pharmaceutical Society • PSNC Concessions Announcement • 1st April • 4th April • 6th April
60 Second GP / Pulse / GP Online / HSJ / NB Medical	<ul style="list-style-type: none"> • 60 Second GP • GP Online • HSJ • Pulse Today
Primary Care Update / PCC / PPP	<ul style="list-style-type: none"> • Primary Care Bulletin • Public Policy Projects News
Health Care Leaders Newsletters	
Kings Fund	<ul style="list-style-type: none"> • The Kings Fund • Weekly News / Health Management and Policy Alert / Health and Well Being Bulletin / Digital Health Digest • Ideas that change health and care • Integrated care in practice Learning from the Covid-19 vaccination programme
World Health Organisation	<ul style="list-style-type: none"> • WHO • OpenWHO
IHCT / CCG / STP / Healthier Futures	<ul style="list-style-type: none"> • Healthier Futures • Black Country & West Birmingham CCG • Dudley Integrated Health and Care • Home :: Black Country Healthcare NHS Foundation Trust

Continuation News & Views

NHSI / NHSE	
University / Student Nurses	
Medisa / Univadis / Geeky Medics / GP Notebook / Medscape	<ul style="list-style-type: none"> • Univadis Newsletter • Univadis Nurses Headlines • Medisa • Geeky Medics • Medscape Nurses • GP Notebook • Latest podcast episodes from GPnotebook • GPnotebook quick update • Latest videos on GPnotebook TV • Psychiatry - Medscape
The Health Foundation	<ul style="list-style-type: none"> • The Health Foundation • Funding available for new research programme: Emotional Support for Young People • Newsletter: Spring forward – new beginnings and new challenges
The Health Care Leaders Update	<ul style="list-style-type: none"> • Health Care Leader News
Practice Index	
Innovation Agency	<ul style="list-style-type: none"> • Innovation Agency Exchange
RCN	<ul style="list-style-type: none"> • RCN • How to cope with anxious moments • Winning the long game • Flexible working • Can you help find the 14,000? • Taking first steps into nursing research • How are governments deciding NHS pay? • Urgent review of NHS mileage rates needed now, insists RCN • RCN welcomes continued free COVID testing for NHS nursing staff in England • RCN re-joins International Council of Nurses • Staffing crisis jeopardising safe care, says RCN in response to NHS survey findings

<i>Continuation News & Views</i>	
RCN Continued	<ul style="list-style-type: none"> • Government fails to stand up for patients in vote on law change • A seat at the table: how RCN forums can influence health policy • 'Every rep had their views listened to' • 'I wanted to be an agent for change' • RCN Congress 2022: booking now open with exciting agenda • RCN members talk, health secretary listens
Nursing in Practice / Nursing Standard / Independent Nurse	<ul style="list-style-type: none"> • Nursing Times • Independent Nurse Magazine • Practice Nursing • Practice Nursing Bulletin • Practice Nursing Community Bulletin
QNI	<ul style="list-style-type: none"> • QNI • QNI publishes Impact Report for 2021 – The Queen's Nursing Institute
NMC	<ul style="list-style-type: none"> • NMC
CMO / CNO	
Nice	<ul style="list-style-type: none"> • NICE • NICE News March 2022
RCGP / BMA / The Lancet	<ul style="list-style-type: none"> • The Lancet • British Medical Journal • Royal College of General Practitioners • QOF QI hub • BMA Update • FREE eLearning: Secure environments • Refugee doctors NHS outsourcing: our analysis a new life in retirement
Midlands Academic Health Science Network	<ul style="list-style-type: none"> • WMAHSN Network
Healthwatch	<ul style="list-style-type: none"> • Healthwatch
Other	

Free Training / Webinars / Meetings / CPD

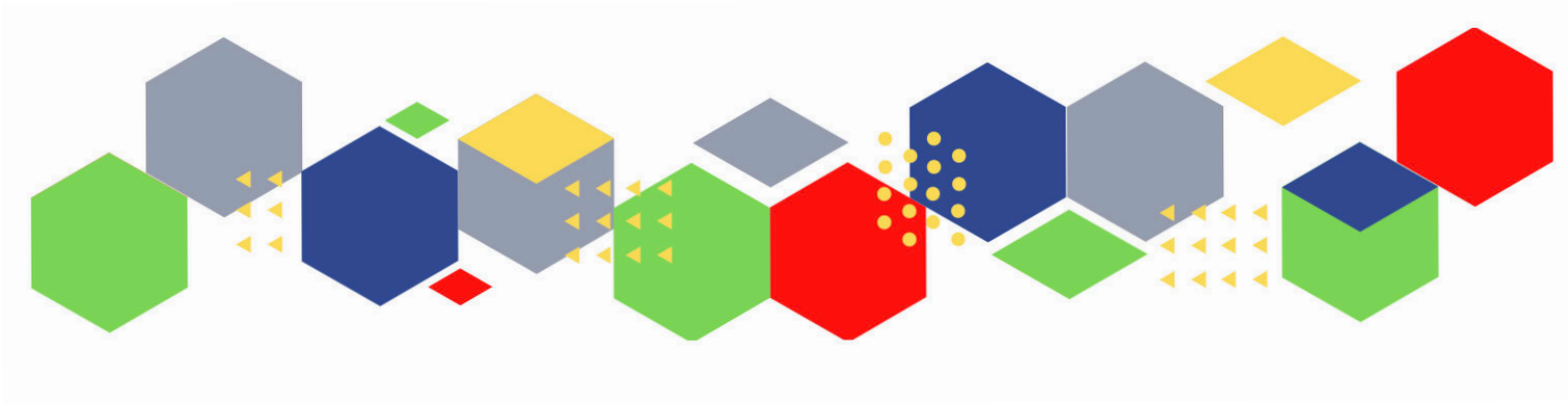
e-Learning for Health	<ul style="list-style-type: none"> • New elearning session highlights dermatological side effects of COVID-19 • New COVID-19 community contact tracing programme now available • Staff Recovery Resources for critical care and the wider health workforce recovering from the COVID-19 pandemic • MindEd infographic highlights programme's success during COVID-19 • Long COVID elearning session available • The Changing Story of Cancer programme • Updates to the Flu Immunisation elearning programme for the 2021/22 flu season • Flu Immunisation programme - elearning • Foundation elearning programme update September 2021
Eventbrite	<ul style="list-style-type: none"> • Acute Behavioural Crisis in CAMHS Registration, Multiple Dates Eventbrite • Palliative & end of life care for people experiencing homelessness (2-day) Tickets, Thu 5 May 2022 at 09:00 Eventbrite • Adult Minor Illness Course Tickets, Tue 26 Apr 2022 at 09:30 Eventbrite • Paediatric Triage Course Tickets, Thu 28 Apr 2022 at 09:30 Eventbrite • Diabetes Education Update: 9 Care Processes and 3 Treatment Targets • Emerging models in menopause – 13th April, 12:30-13:30 - https://www.eventbrite.co.uk/e/250122080877 • Spreading VGCs at scale: Learnings from 2021 – 25th May, 12:30-13:45 - https://www.eventbrite.co.uk/e/250120606467 • Emerging models in diabetes – 14th June, 12:30-13:30 - https://www.eventbrite.co.uk/e/250128078817 • Supporting families and children through VGCs – 13th July, 12:30-13:30 - https://www.eventbrite.co.uk/e/250133545167
YouTube	<ul style="list-style-type: none"> • NHS England
Blogs/Vlogs	<ul style="list-style-type: none"> • How well do vaccines protect against Omicron? What the data shows • A career in science - past, present and future • Changing the COVID-19 Case Definition • Reporting the vital statistics - how data management has been central to the handling of the pandemic - UK Health Security Agency • Reflecting on a year responding to COVID-19 • Let's talk about ethics review - Health Research Authority • Monitoring the Mental Health Act in 2020/21 by Care Quality Commission

Continuation of Free Training / Webinars / Meetings / CPD

Area Bulletins	
BCWB Training Hub	<ul style="list-style-type: none"> • Black Country and West Birmingham Training Hub • Latest news from the Black Country and West Birmingham Training Hub
Evidence based care	
Development / Information and Knowledge	<ul style="list-style-type: none"> • FutureProof Health Training & Events • Inaugural Broadcasts 2021 • Red Whale Training • LATEST WEBINARS FROM ISSUES & ANSWERS • Nursing Events • Hot Topics Migrant and Refugee Health Clinic - Tuesday 26th April 2022 • FREE Hot Topics Safeguarding Clinic • Just launched: General practice in-person conference • Getting ready for patients to have access to their future data • Online workshop: Patient, professional and public activation • Inclusive Pharmacy Practice: Population Health Management Webinar for system pharmacy professionals • Online workshop: Getting Unstuck • Looking after our primary care people – Health and wellbeing engagement event • General Practice Webinar • Your invitation to: GP's, what's your role in the management of cow's milk protein allergy (CMPA)? Helping you navigate the CMPA consultation - 21st April, 7pm • Chronic Conditions Month 2022 • The Digital Healthcare Show, part of Health Plus Care - 18th/19th May • Nursing in Practice Birmingham - 9th June • 2022: 18th National Conference of the Primary Care Diabetes Society

Continuation of Free Training / Webinars / Meetings / CPD

Free to RCN	<ul style="list-style-type: none"> • 13 Apr - RCN Birmingham East, North and Solihull branch meeting • 20 Apr - RCN South Staffordshire Learning Event: An introduction to genomics in health care - how relevant is it to nursing? • 20 Apr - RCN North Staffordshire Learning Event: Adapting and adopting – the Staff Support & Counselling Service • 27 Apr - RCN Birmingham East, North and Solihull Learning Event: When health, safety and patient care crosses into the Coroner's Court process • 18 May - RCN North Staffordshire Learning Event: A wound care update and the WAPU app
Podcasts	<ul style="list-style-type: none"> • The Nursing Handover Podcast • Nursing Standard Podcasts • What Makes a Nurse? • The MedicsPro Podcast • Nursing Matters • Welcome to the BJN Podcast • Why we care • EBN podcast • This Is Nursing • Maroon Mindset • Teach me, I'm a Nurse • Past Caring • RCGP eLearning podcast • The BMJ Podcast • Primary Care Network podcasts • The Professional Support Unit's Pandemic Podcast • How can public health nurses help deliver the Healthy Child Programme this winter? • Talking GP
Research	<ul style="list-style-type: none"> • Science Daily • Multimorbidity / multiple long-term conditions (MLTC) • Funding bodies launch consultation on future research assessment
Freebies	<ul style="list-style-type: none"> • Blue Light Card
Other	



Thank you for reading Future Proof Health's weekly news!

If you missed past issues, please click [here](#) to view them

More information can be found on our website, [here](#)

Don't forget to like us on [Facebook](#) & Follow us on [Twitter](#)

