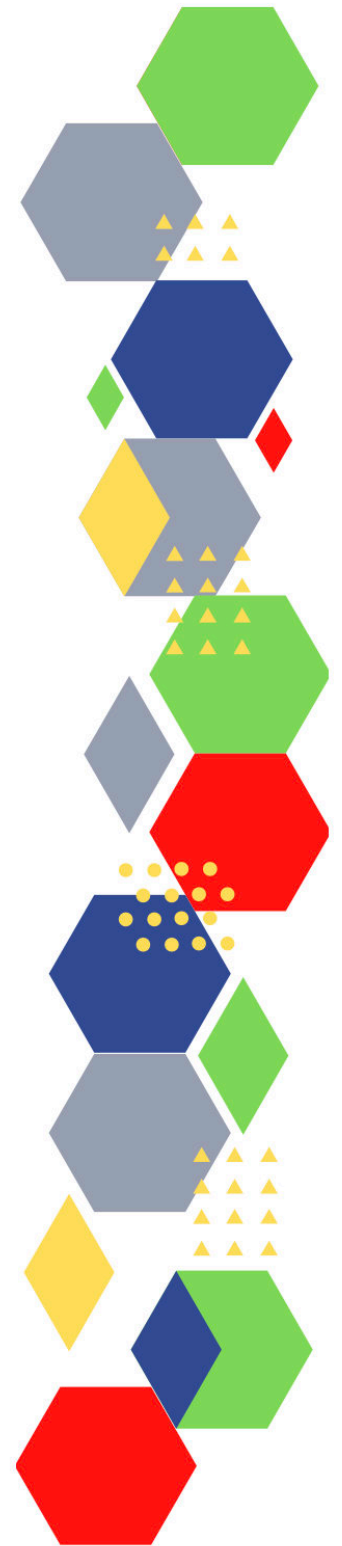
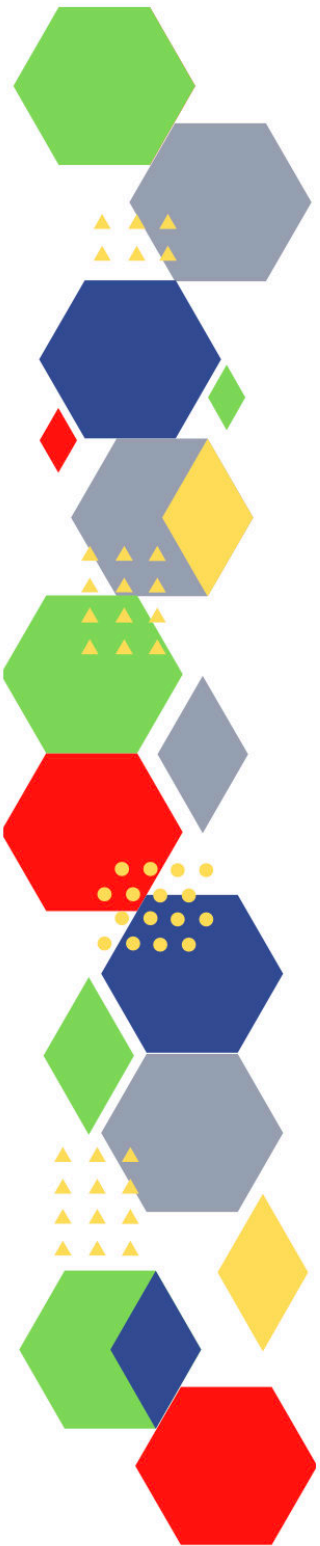




Future Proof Health Presents

Weekly News

31st March 2022



Communication	
Communication with Patients	
Communication within Teams	
Consent	<ul style="list-style-type: none"> • Gillick competency and Fraser guidelines • CONSENT POLICY • ReSPECT for healthcare professionals
People and Personal Development	
Personal / People Development / Leadership	<ul style="list-style-type: none"> • Accountability and delegation in practice
NHS Employers / HR / NHS Pension	<ul style="list-style-type: none"> • NHS Employers • Pensions Online
Health, Safety & Security	
	<ul style="list-style-type: none"> • NPSA • Control of Substances Hazardous to Health (COSHH) • HSE Weekly Digest eBulletin
Gov UK - NHS	
CQC	<ul style="list-style-type: none"> • GP mythbusters • Examples of outstanding practice for GPs • CQC Newsletter
MIMS	<ul style="list-style-type: none"> • Prescribing Update
Antibiotic steward-ship / Anti-microbial resistance	<ul style="list-style-type: none"> • Antibiotics in sore throat
Drug / Device Alerts (MHRA)	

Vaccines / Medications / Prescribing	<ul style="list-style-type: none"> • Protocol for ordering, storing and handling vaccines • A Competency Framework for all Prescribers • Non-medical prescribing • The Human Medicines Regulations 2012 • RCN - Non-medical prescribers • Royal Pharmaceutical Society • Standards for prescribing • Clinical Negligence Scheme for General Practice • Use of a DOAC in cancer • PPI use and hearing problems in type 2 diabetes
Emergency Situations	<ul style="list-style-type: none"> • The updated National Early Warning Score and its use with suspected Sepsis • Resuscitation Council UK
Infection Control / Infection Statics	
Safe Guarding	<ul style="list-style-type: none"> • Female genital mutilation (FGM) • PREVENT • Child protection system in the UK • Safeguarding Adults • Safeguarding children: detailed information • Hot Topics Safeguarding Clinic - Tuesday 5th April 2022
Practice Policies	
Audit	
Information Governance / Record Keeping	<ul style="list-style-type: none"> • Guide to Data Protection • Supporting general practice – Medical record keeping
Quality & Service Improvement	
Quality, Service & Improvement	<ul style="list-style-type: none"> • The PRSB • General Practice Assessment Questionnaire (GPAQ) • Healthwatch • NHS Five Year Forward View • General Practice Forward View • NMC • Dr Jon Griffiths • NHS Confed • Using the Friends and Family Test to improve patient experience

Roles in General Practice	<ul style="list-style-type: none"> • Standards for nursing associates • GP mythbuster 57: Health Care Assistants in General Practice
Revalidation	
Personal Practice & Development	
Practice Management	<ul style="list-style-type: none"> • Institute of General Practice Management • Practice Index
NHS Self Care & Resilience	<ul style="list-style-type: none"> • Samaritans • Mental Health at work • Calm • Supporting our NHS people • The Hub :: Black Country Healthcare NHS Foundation Trust • NHS England » Looking after you: confidential coaching and support for the primary care workforce • NHS England » Health and wellbeing programmes • Looking after our primary care people – Health and wellbeing engagement event
Practice Transformation	<ul style="list-style-type: none"> • Roadmaps to Practice
Future of NHS / General Practice	<ul style="list-style-type: none"> • Public perceptions of the NHS and social care: performance, policy and expectations • NHS Discharge Forum 2022 • NHS England » GP Contract • NHS Long Term Plan » Online version of the NHS Long Term Plan • Young people are the future: how can recruiters encourage more of them to join the NHS workforce? • My Planned Care NHS • Coronavirus » Delivery plan for tackling the COVID-19 backlog of elective care • Pandemic is a wake-up call: Lords Committee calls for new approach to resilience and wellbeing • NHS Backlogs and waiting times
ICS / PCN	<ul style="list-style-type: none"> • Integrated care partnerships: engagement findings • Integrated care in practice Learning from the Covid-19 vaccination programme • Integrated care communications toolkit

QOF / PHOF / DES / LES	<ul style="list-style-type: none"> • NHS England » 2022/23 NHS Standard Contract
Leadership	<ul style="list-style-type: none"> • Leadership Academy
Personalised Care	
Personalised Care / Self Care / Social Prescribing / Health Coaching	<ul style="list-style-type: none"> • Self Care forum • Personalised Care Institute • Personalised care • Social Prescribing Academy • Self Care Forum Newsletter
Group consultation	
Working Differently	
Shared Decision Making	
Equality & Diversity	
Equality & Diversity	<ul style="list-style-type: none"> • Public Health Profiles
Inclusion Health	<ul style="list-style-type: none"> • Health Creation Academic Network
Poverty / Homelessness	<ul style="list-style-type: none"> • Crisis • This is Poverty
Population Health / Health Communities	<ul style="list-style-type: none"> • Healthy communities together – embarking on a journey of partnership working
Thrive Into Work	<ul style="list-style-type: none"> • Thrive into Work • Thrive into Work Referral form
Health Inequalities	<ul style="list-style-type: none"> • Building public understanding of health and health inequalities

Trans / Non-binary Health / LGBTQ+	<ul style="list-style-type: none"> • LGBT Foundation • NHS population screening: information for trans and non-binary people • Cervical screening for trans men and/or non-binary people
Migrant / Refugee Health	<ul style="list-style-type: none"> • THE REFUGEE & MIGRANT CENTRE • Hot Topics Migrant and Refugee Health Clinic - Tuesday 26th April 2022
Traveller / Gypsy / Romany Health	
Veterans Health	<ul style="list-style-type: none"> • The first call for help takes courage • Mental health support for veterans, service leavers and reservists
Management of Emergency Situations	
Management of Emergency Situations	<ul style="list-style-type: none"> • The updated National Early Warning Score and its use with suspected Sepsis
111	
Red Flags	<ul style="list-style-type: none"> • Supporting general practice – Common pitfalls
Sepsis	<ul style="list-style-type: none"> • Sepsis: recognition, diagnosis and early management • Sepsis guidance implementation advice for adults • Sepsis in Children • Sepsis Trust • RCGP: Sepsis • quick SEPSIS RELATED ORGAN FAILURE ASSESSMENT
Therapeutic Monitoring	
OSCE	<ul style="list-style-type: none"> • Geeky Medics • Abdominal Examination - Demonstration - YouTube • Cardiovascular Examination - Demonstration - YouTube • Respiratory Examination - Demonstration - YouTube • Physical Diagnosis Skills - University of Washington School of Medicine

Role Specific	
Cervical Cytology	<ul style="list-style-type: none"> • Guide to the interim assessment • British Association for Cytopathology • Lab Tests Online
Ear Care	<ul style="list-style-type: none"> • Ear Care Centre • RNID
Wound Management	<ul style="list-style-type: none"> • Microworld • Tissue Viability Society • The BLS • Wounds on Thursdays •
Minor Surgery	
Obtaining Samples / Results	<ul style="list-style-type: none"> • Lab Tests Online
Health Promotion / Health Screening	
Health Promotion / Population Health	<ul style="list-style-type: none"> • Better Health • EXi App • Improving population health on the frontline – Jane's story • NHS England » Primary care network offers extra support for high-risk group with heart failure and social isolation • NHS England » Population Health and the Population Health Management Programme
Health Screening	<ul style="list-style-type: none"> • PHE Screening
PHE/OHID	<ul style="list-style-type: none"> • Knowledge & Library Services • Campaign Resources • Public Health Profiles • Health Publications • Health Profile for England 2021
NHS Health Check	<ul style="list-style-type: none"> • NHS Health Check

NOIDS / PHE Surveillance / Syndromic Surveillance	<ul style="list-style-type: none"> • Notifications of infectious diseases (NOIDs)
Addiction/Smoking	<ul style="list-style-type: none"> • Drink Coach • Stop smoking interventions and services • IOTOD - EXPERT WEBINAR
Immunisation / Travel Health	
<ul style="list-style-type: none"> • Vaccinations and infections • Joint Committee on Vaccination and Immunisation • Immunisation against infectious disease • West Midlands Immunisation Service • Immunisation information for Health Care Services within the West Midlands area • Vaccination of individuals with uncertain or incomplete immunisation status • WHO vaccine-preventable diseases: monitoring system. 2020 global summary • The Foundations of Immunization: What, Who, When and Why? • Winter Vaccination - Prime phase: Social Media content calendar and assets - 2021 • Measles outbreak training • Vaccine Safety Basics • HPV vaccination: guidance for healthcare practitioners • HPV vaccination programme for men who have sex with men (MSM) • Changing to a 2 dose NHS HPV vaccination schedule letter 	
Flu	<ul style="list-style-type: none"> • Flu and flu vaccinations • The national influenza immunisation programme 2021 to 2022 • Flu vaccines for the 2021 to 2022 season poster • Appendix C: Flu vaccinator competency assessment tool • Healthcare assistants and flu vaccinations • Flu Campaign Resources 2021/22 • National flu and COVID-19 surveillance reports published

Continuation of Immunisation / Travel Health

Covid Vaccine	<ul style="list-style-type: none"> • Greenbook COVID-19 chapter 14a • Updates made to the COVID-19 vaccination elearning programme • HEE e-LfH COVID-19 vaccination programme launches hit 2 million • COVID-19 Vaccine Moderna e-learning now available • GP COVID-19 vaccine dashboard • Coronavirus (COVID-19) vaccines adverse reactions • COVID-19 vaccination: resources for children and young people aged 12 to 17 years • The Covid-19 vaccination programme • JCVI updates advice on vaccinations for 5 to 11 age group • A guide to the spring booster for those aged 75 years and older and older residents in care homes
Children	
Adults	<ul style="list-style-type: none"> • Immunisation patient group direction (PGD) templates • Shingles immunisation programme: introduction of Shingrix® letter
Vaccine Update	<ul style="list-style-type: none"> • Vaccine update • Vaccine Update Index
PGD	
Travel Health	<ul style="list-style-type: none"> • Travel Health Pro • Fit for Travel • Travel Health • Jane Chiodini • Corona.Help

Mental Health / Learning Disability / Disability	
Mental Health	<ul style="list-style-type: none"> • Mental Health • Mental Health UK • Mind • Place2b • Rethink Mental Illness • Young Minds • Every Mind Matters • Calm • Headspace • We Can Talk • Get Your Mind Plan • Feeling low? • Better Health - Every Mind Matters - Resources • ZSA Training • Psychiatry - Medscape • Restraint, segregation and seclusion review: Progress report (March 2022)
Learning Disability	<ul style="list-style-type: none"> • Learning Disabilities • Learning Disability England • Mencap • Bild • Autism • NHS England » Five-year NHS autism research strategy for England
Disability	<ul style="list-style-type: none"> • Disability Rights UK • Disability Matters

From Cradle to...

<p>Infant Health</p>	<ul style="list-style-type: none"> • Tommys • First Steps Nutrition Trust • Bliss • NHS App - Baby Buddy • NHS App - Peanut • ICON Toolkit
<p>Child Health</p>	<ul style="list-style-type: none"> • Unicef • Health Professional Academy • Premature Babies • Child and Maternal Health • Women and Child First • Child Health Information Services • Place2b • Childhood eczema • Childhood asthma • Childrens Commissioner - The Big Answer • Suicide in Children and Young People • Children and young people's mental health: government response • New report confirms fluoridation can reduce tooth decay among children • MSD Chickenpox Resources - Nursing in Practice • Paediatric focus from GPn
<p>Adolescent Health</p>	<ul style="list-style-type: none"> • Adolescent Health Programme • Society for Adolescent Health and Medicine • Young Minds • CPD: Depression in young people - Nursing in Practice

Mens Health	<ul style="list-style-type: none"> • Mens Health Forum • Mens Health Month • Mens health.org • Mens Health UK • Men and mental health • Men's Mental Health Awareness • Prostate Cancer UK • Orchid Fighting Male Cancer • Prostate Cancer UK Facebook Page • Men's Voices Event • Movember
Women's Health	<ul style="list-style-type: none"> • Womens Health Concern • Well Being of Women • Coppa Feel • Menopause Matters • The Menopause Charity • Royal College of Obstetricians and Gynaecologists - Guidelines • Pelvic Partnership • CRUK - Womens Cancer • Breast Cancer Now • Foundation for Women's Cancer • Eve Appeal • Ovarian.Org • Jo's Trust • Well Spring
The Older Population	<ul style="list-style-type: none"> • BGS • Ageing Better • Government failing to ensure a decent life for older people as pensioner poverty spirals
Young Carers	
Complex Needs	

Carers / Social Care / Care Homes	<ul style="list-style-type: none"> • The Care Provider Alliance • Skills for Care • The Care Workers' Charity • Supporting Adult Carers • Care providers to receive fairer costs for providing care • Local Authorities announced as trailblazers for social care charging reform • Adult Social Care Update • Market sustainability and fair cost of care fund 2022 to 2023: guidance
Family Planning & Sexual Health	
Family Planning	<ul style="list-style-type: none"> • Faculty of Sexual and Reproductive Healthcare Education and Training
Reproductive	<ul style="list-style-type: none"> • Tommys
Sexual Health / Sexual Abuse	<ul style="list-style-type: none"> • Sexual and Reproductive Health Profiles • FSRH Education & Training
Maternity / Neonate health	
Care of Patients with Long Term Conditions	
LTC	<ul style="list-style-type: none"> • Chronic Conditions On Demand
Diabetes & Pre-Diabetes	<ul style="list-style-type: none"> • AZ Medical and Educational Goods and Services in Diabetes • Mumoactive • The mySugr App • Foot Check • Diabetes Education Update: 9 Care Processes and 3 Treatment Targets • NHS England » NHS Prevention Programme cuts chances of Type 2 diabetes for thousands • Type 1 diabetes in adults: diagnosis and management [NG17]
Respiratory	<ul style="list-style-type: none"> • Spirometry: step by step • ARTP • British Lung Foundation • The Primary Care Respiratory Society • New carbon footprint table from MIMS supports greener inhaler prescribing • Shape the future of COPD care • COVID-19 respiratory equipment

Continuation of Long Term Conditions

COPD	<ul style="list-style-type: none"> • Right Breathe
Asthma	<ul style="list-style-type: none"> • FeNO - Fractional exhaled nitric oxide - for the diagnosis and management of Asthma • Asthma UK • Asthma: diagnosis, monitoring and chronic asthma management • GINA 2021: the missing pieces in the childhood asthma puzzle • GINA: Interim Guidance About COVID-19 & Asthma • Thunderstorm asthma and public health – looking back to move forward
Hypertension	<ul style="list-style-type: none"> • British Heart Foundation • Blood Pressure UK • Hypertension in adults: diagnosis and management • Hypertension in adults: diagnosis and treatment • NICE updates hypertension guidance • Obesity and hypertension - General Practice Notebook
CVD/AF	<ul style="list-style-type: none"> • QRISK®3-2018 risk calculator • Heart Rhythm Alliance • CVD risk assessment and management • Health matters: preventing cardiovascular disease • NHS England » National service model for an integrated community stroke service • Atrial fibrillation: diagnosis and management [NG196] • Antiemetics linked to increased risk of stroke • Assessment and examination of the cardiovascular system • Updates in cardiovascular medicine from GPnotebook
Heart Failure	<ul style="list-style-type: none"> • British Heart Foundation • British Society Guidelines • NHS England » Primary care network offers extra support for high-risk group with heart failure and social isolation • HOCM - General Practice Notebook

Continuation of Long Term Conditions

Cancer / Oncology	<ul style="list-style-type: none"> • Surviving Thyroid Cancer • Help Us Help You - Lung Cancer Symptoms • Becca Breast Cancer Support App • Breast Cancer Now • MoleCare App • Macmillian • NHS England » Celebrities join forces with the NHS to encourage cancer checks
Chronic Kidney Disease	<ul style="list-style-type: none"> • Kidney.Org • Kidney Quality Improvement Partnership
Liver Disease	<ul style="list-style-type: none"> • British Liver Trust • Liver Research • BRITISH ASSOCIATION FOR THE STUDY OF THE LIVER • LIVErNORTH • LIVER DISEASE AND CIRRHOSIS
Blood Disorders	<ul style="list-style-type: none"> • Blood Cancer • Thalassaemia • ITP • Haemophilia • UK MDS Forum • Save a life. Give plasma. • Diagnosis and management of pernicious anaemia • Haemochromatosis UK
G.I	<ul style="list-style-type: none"> • GIST Cancer UK • Overview PredictSURE IBD and IBDX to guide treatment of Crohn's disease
ENT	
G.U	
Neurological Conditions	<ul style="list-style-type: none"> • The Brain Tumour Charity • Narcolepsy.Org • ACNR • NHS England » Headache busting balloons among pioneering treatments rolled out on NHS • Neurology - Medscape

Continuation of Long Term Conditions

Musculoskeletal Conditions	<ul style="list-style-type: none"> • Rheumatology • National Axial Spondyloarthritis Society • Musculoskeletal health • Musculoskeletal health: 5 year prevention strategic framework • Faculty of Occupational Medicine • Guide to embedding your first contact physiotherapy service
Endocrine Disorders / Metabolic Disorders	<ul style="list-style-type: none"> • Endocrinology • Turner Syndrome Support Society • Thyroid Eye Disease • British Thyroid Foundation • Thyroid UK • Pituitary • Addisons Disease • Parathyroid UK • The Royal Osteoporosis Society • Metabolic Support UK
Frailty	<ul style="list-style-type: none"> • Recognising frailty • Identifying frailty • CLINICAL FRAILTY SCALE
Dementia	<ul style="list-style-type: none"> • Dementia UK • Understanding dementia • My House of Memories - NHS App • Dementia profile updates • Caring for Carers Dementia Support Group (Tuesdays) • Delirium Champions • Guide to continuing healthcare (CHC) funding - Dementia UK
Allergy / Auto-immune / Genetic Conditions	<ul style="list-style-type: none"> • Allergy UK • Rheumatology • Addisons Disease • Primary hypothyroidism – issues in diagnosis and management

Continuation of Long Term Conditions

Dermatology	<ul style="list-style-type: none"> • British Association of Dermatologists • Eczema • The British Skin Foundation • Acne vulgaris: management • The Primary Care Dermatology Society • Acne.org • Allergy UK • Urticaria • Hives • Sunburn • Causes of cancer and reducing your risk • What is Rosacea? • Rosecea • Herpes.org • Shingles • Fungal Skin Infection - Foot • The Psoriasis Association • Psoriasis • Melanoma • Skin Health Information • British Association of Plastic Reconstructive and Aesthetic Surgeons • Warts and verrucae
Obesity	<ul style="list-style-type: none"> • Obesity UK • Obesity and hypertension - General Practice Notebook
Pain Management	<ul style="list-style-type: none"> • Pain Concern • UK career framework for pain nurses
Genomics	
Multi-Morbidity	<ul style="list-style-type: none"> • Multimorbidity • Multimorbidity / multiple long-term conditions (MLTC)

<i>Continuation of Long Term Conditions</i>	
Minor Illness / First Contact Assessment	<ul style="list-style-type: none"> • Urinary Tract Infections: Pathologies and Challenges
Other / Case Studies	<ul style="list-style-type: none"> • Ultra Rare Disease Disorders And Disabilities Foundation • MyCognition Home - NHS App • The Cold Weather Plan for England
End of Life Care	
End of Life Care	<ul style="list-style-type: none"> • ReSPECT for healthcare professionals • Hospice UK
Covid-19	
Covid-19	<ul style="list-style-type: none"> • Covid Live • Coronavirus Statistics • COVID-19: Simple and effective ways to protect yourself and others
Long Covid	<ul style="list-style-type: none"> • Supporting your recovery after COVID-19 • Long Covid Toolkit • Long term effects of COVID (Long COVID) • Post-COVID Syndrome (Long COVID) • COVID-19 Yorkshire Rehabilitation Screening Tool • FOM Guidance • Supporting colleagues affected by Long COVID
Covid Response / Recovery	

News & Views

Digital News / Remote Consultations	<ul style="list-style-type: none"> • Digital Health News Webinars • Digital Health News • NHS Digital • Digital Boards Two Years On
PSNC News / Pharmacy	<ul style="list-style-type: none"> • National Pharmacy Association • Royal Pharmaceutical Society • PSNC Concessions Announcement • 28th March • 30th March
60 Second GP / Pulse / GP Online / HSJ / NB Medical	<ul style="list-style-type: none"> • 60 Second GP • GP Online • HSJ • Pulse Today
Primary Care Update / PCC / PPP	<ul style="list-style-type: none"> • Primary Care Bulletin • Public Policy Projects News
Practice Index	
Kings Fund	<ul style="list-style-type: none"> • The Kings Fund • Weekly News / Health Management and Policy Alert / Health and Well Being Bulletin / Digital Health Digest • Ideas that change health and care • Integrated care in practice Learning from the Covid-19 vaccination programme
IHCT / CCG / STP / Healthier Futures	<ul style="list-style-type: none"> • Healthier Futures • Black Country & West Birmingham CCG • Dudley Integrated Health and Care • Home :: Black Country Healthcare NHS Foundation Trust

Continuation News & Views

NHSI / NHSE	
University / Student Nurses	
Medisa / Univadis / Geeky Medics / GP Notebook / Medscape	<ul style="list-style-type: none"> • Univadis Newsletter • Univadis Nurses Headlines • Medisa • Geeky Medics • Medscape Nurses • GP Notebook • Practice-changing updates from GPnotebook: March 2022 • Latest podcast episodes from GPnotebook • Urinary Tract Infections: Pathologies and Challenges • GPnotebook quick update
The Health Foundation	<ul style="list-style-type: none"> • The Health Foundation • Building public understanding of health and health inequalities • Analysis finds 10% of patient care requests indicate a preference for face-to-face GP consultation
The Health Care Leaders Update	<ul style="list-style-type: none"> • Health Care Leader News
Innovation Agency	<ul style="list-style-type: none"> • Innovation Agency Exchange
RCN	<ul style="list-style-type: none"> • RCN • Develop an app to support children and young people's mental health • Standing up for nursing in challenging times • Congress Royal College of Nursing • Cut in fuel duty not enough to help cash-strapped community nursing staff • Can you help find the 14,000? RCN Magazines • Apply now for funding (rcnfoundation.org.uk)

<i>Continuation News & Views</i>	
Nursing in Practice / Nursing Standard / Independent Nurse	<ul style="list-style-type: none"> • Nursing Times • Independent Nurse Magazine • Practice Nursing • Practice Nursing Bulletin • Practice Nursing Community Bulletin
QNI	<ul style="list-style-type: none"> • QNI • Wound Care Service Models in Community Nursing Registration. Mon 4 Apr 2022 at 13:30 • Innovation Projects 2022 – The Queen's Nursing Institute • Community of Advanced Practice in Mental Health • Wound care service models in community nursing How can lower limb wound care service models provide help for an overstretched community workforce? Training 4th April
NMC	<ul style="list-style-type: none"> • NMC • Thank you
CMO / CNO	
World Health Organisation	<ul style="list-style-type: none"> • WHO • OpenWHO • OpenWHO Monthly Newsletter • #NoExcuse #StopSEAH webinar series • OpenWHO course catalogues
Nice	<ul style="list-style-type: none"> • NICE • NICE News March 2022
RCGP / BMA / The Lancet	<ul style="list-style-type: none"> • The Lancet • British Medical Journal • Royal College of General Practitioners • QOF QI hub • BMA Update • FREE eLearning on Diabetes
Midlands Academic Health Science Network	<ul style="list-style-type: none"> • WMAHSN Network

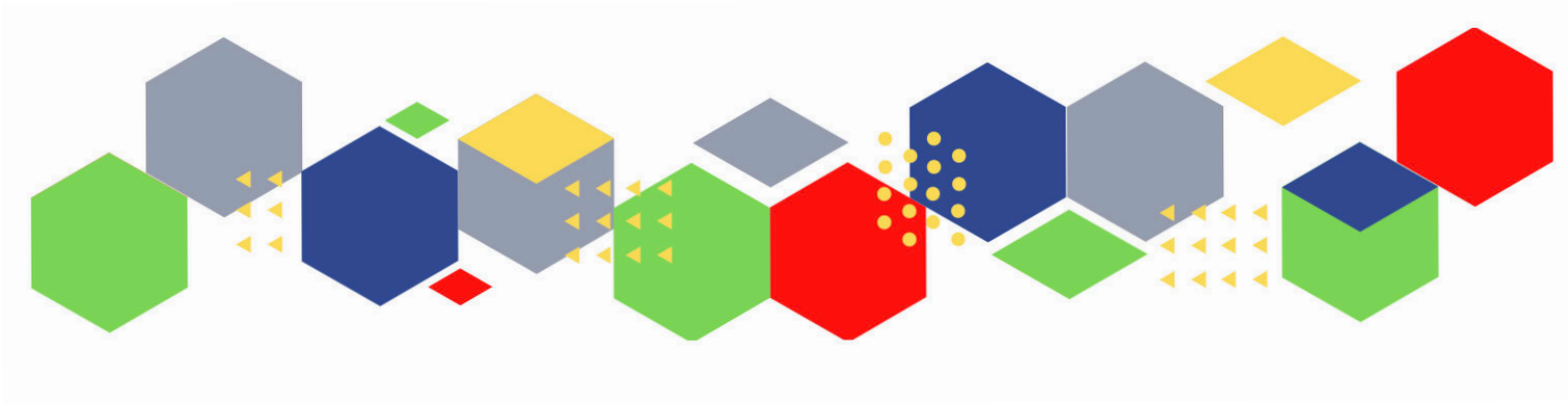
Free Training / Webinars / Meetings / CPD	
Healthwatch	<ul style="list-style-type: none"> • Healthwatch
Other	
e-Learning for Health	<ul style="list-style-type: none"> • New elearning session highlights dermatological side effects of COVID-19 • New COVID-19 community contact tracing programme now available • Staff Recovery Resources for critical care and the wider health workforce recovering from the COVID-19 pandemic • MindEd infographic highlights programme's success during COVID-19 • Long COVID elearning session available • The Changing Story of Cancer programme • Updates to the Flu Immunisation elearning programme for the 2021/22 flu season • Flu Immunisation programme - elearning • Foundation elearning programme update September 2021
Eventbrite	<ul style="list-style-type: none"> • Acute Behavioural Crisis in CAMHS Registration, Multiple Dates Eventbrite • Palliative & end of life care for people experiencing homelessness (2-day) Tickets, Thu 5 May 2022 at 09:00 Eventbrite • Adult Minor Illness Course Tickets, Tue 26 Apr 2022 at 09:30 Eventbrite • Paediatric Triage Course Tickets, Thu 28 Apr 2022 at 09:30 Eventbrite • Diabetes Education Update: 9 Care Processes and 3 Treatment Targets
YouTube	<ul style="list-style-type: none"> • NHS England
Blogs/Vlogs	<ul style="list-style-type: none"> • How well do vaccines protect against Omicron? What the data shows • A career in science - past, present and future • Changing the COVID-19 Case Definition • Reporting the vital statistics - how data management has been central to the handling of the pandemic - UK Health Security Agency • Reflecting on a year responding to COVID-19 • Let's talk about ethics review - Health Research Authority • Monitoring the Mental Health Act in 2020/21 by Care Quality Commission

Continuation of Free Training / Webinars / Meetings / CPD

Area Bulletins	
BCWB Training Hub	<ul style="list-style-type: none"> • Black Country and West Birmingham Training Hub
Evidence based care	
Development / Information and Knowledge	<ul style="list-style-type: none"> • FutureProof Health Training & Events • RCN Events - West Midlands • Inaugural Broadcasts 2021 • Red Whale Training • LATEST WEBINARS FROM ISSUES & ANSWERS • Nursing Events • Hot Topics Clinic - Prostate Cancer UK - Live Webinar - Tuesday 22nd March 2022 • Hot Topics Safeguarding Clinic - Tuesday 5th April 2022 • Hot Topics Migrant and Refugee Health Clinic - Tuesday 26th April 2022 • FREE Hot Topics Safeguarding Clinic • Just launched: General practice in-person conference • Getting ready for patients to have access to their future data • Online workshop: Patient, professional and public activation • Inclusive Pharmacy Practice: Population Health Management Webinar for system pharmacy professionals • Online workshop: Getting Unstuck • Looking after our primary care people – Health and wellbeing engagement event • General Practice Webinar
Free to RCN	

Continuation of Free Training / Webinars / Meetings / CPD

Podcasts	<ul style="list-style-type: none"> • The Nursing Handover Podcast • Nursing Standard Podcasts • What Makes a Nurse? • The MedicsPro Podcast • Nursing Matters • Welcome to the BJN Podcast • Why we care • EBN podcast • This Is Nursing • Maroon Mindset • Teach me, I'm a Nurse • Past Caring • RCGP eLearning podcast • The BMJ Podcast • Primary Care Network podcasts • The Professional Support Unit's Pandemic Podcast • How can public health nurses help deliver the Healthy Child Programme this winter? • Talking GP
Research	<ul style="list-style-type: none"> • Science Daily • Multimorbidity / multiple long-term conditions (MLTC) • Funding bodies launch consultation on future research assessment
Freebies	<ul style="list-style-type: none"> • Blue Light Card
Other	



Thank you for reading Future Proof Health's weekly news!

If you missed past issues, please click [here](#) to view them

More information can be found on our website, [here](#)

Don't forget to like us on [Facebook](#) & Follow us on [Twitter](#)

