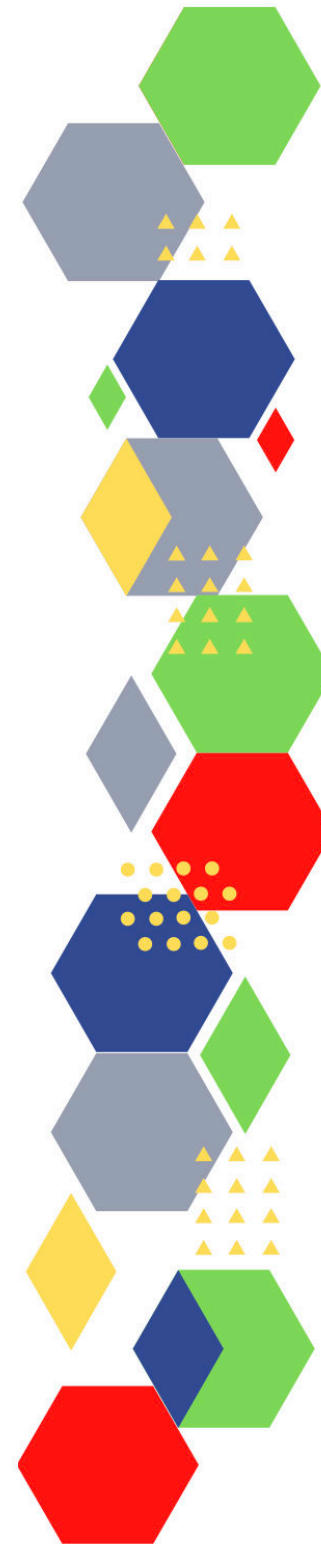


Future Proof Health Presents

Weekly News

9th September 2021



| | |
|---|--|
| Communication | |
| Communication with Patients | |
| Communication within Teams | |
| People and Personal Development | |
| Personal / HR & People Development / Leadership | <ul style="list-style-type: none"> • Job Vacancies • Accountability and delegation in practice |
| Health, Safety & Security | |
| • NPSA | |
| CQC | <ul style="list-style-type: none"> • CQC on behalf of DHSC Adult Social Care update • An update on how we're implementing our new strategy |
| Vaccines & Medications | <ul style="list-style-type: none"> • Protocol for ordering, storing and handling vaccines • NHS cholesterol-busting jab to save thousands of lives |
| Drug / Device Alerts (MHRA) | • The use and regulation of pulse oximeters (information for healthcare professionals) |
| Emergency Situations | <ul style="list-style-type: none"> • The updated National Early Warning Score and its use with suspected Sepsis • Resuscitation Council UK |
| Infection Control | • Are you aware of the new National Standards of Healthcare Cleanliness? NHS England says you should be! |
| Safe Guarding | <ul style="list-style-type: none"> • Female genital mutilation (FGM) • PREVENT • Child protection system in the UK • Safeguarding Adults • Safeguarding children: detailed information • Wolverhampton Safeguarding Together |
| Practice Policies | • Inevitable online future for GP patient registrations? |
| Audit | |
| Information Governance | <ul style="list-style-type: none"> • Guide to Data Protection • Policy statement on information security and governance |

| Quality & Service Improvement | |
|--------------------------------------|---|
| Quality & Service | <ul style="list-style-type: none"> • The PRSB • General Practice Assessment Questionnaire (GPAQ) • Healthwatch • NHS Five Year Forward View • General Practice Forward View • NMC • Practice Index Weekly • NHS General Practice Multidisciplinary Team Resources • Access to general practice communications toolkit – Midlands |
| Improvement | |
| New Roles in General Practice | <ul style="list-style-type: none"> • Standards for nursing associates |
| Personal Practice & Development | |
| NHS Self Care & Resilience | <ul style="list-style-type: none"> • Wellbeing support line for health and social care workers • Our Frontline • Staff mental health and wellbeing hubs |
| ICS / PCN | |
| Leadership | |
| Personalised Care | |
| Personalised Care / Self Care | <ul style="list-style-type: none"> • Self care forum • Personalised Care Institute |
| Social Prescribing / Health Coaching | <ul style="list-style-type: none"> • Personalised care • National Academy for Social Prescribing • Regional Leadership for Personalised Care programme • Self Care Forum |
| Group consultation | <ul style="list-style-type: none"> • Group Consultation Webinars |

| Equality & Diversity | |
|------------------------------------|---|
| Equality & Diversity | • Public Health Profiles |
| Inclusion Health | |
| Poverty / Homelessness | • ACCESS CARDS COMMS TOOLKIT |
| Health Inequalities | • Chart of the week: How does patient experience of general practice vary with deprivation? • Charities unite to tackle health inequalities |
| Migrant Health | |
| Thrive Into Work | • Referral Form • Social Media Posts |
| Management of Emergency Situations | |
| Management of Emergency Situations | • The updated National Early Warning Score and its use with suspected Sepsis |
| Red Flags | |
| Sepsis | • Sepsis: recognition, diagnosis and early management • Sepsis guidance implementation advice for adults • Sepsis in Children • Sepsis Trust • RCGP: Sepsis |
| Therapeutic Monitoring | |
| Syndromic surveillance | • Syndromic surveillance: systems and analyses |
| Health & Well-Being | |
| Health & Well-Being | |
| Assessment | |
| Obtaining samples | • Becton Dickinson Blood Specimen Collection Portfolio – supply disruption |
| QOF/PHOF | • Public Health Outcomes Framework: August 2021 data update |

| Role Specific | |
|--------------------------------------|--|
| Cervical Cytology | • Guide to the interim assessment |
| Ear Care | |
| Wound Management | • WOUNDEXPO2021 |
| Minor Surgery | |
| Health Promotion / Health Screening | |
| Health Promotion / Population Health | <ul style="list-style-type: none"> • Better Health • EXi App • Adult Obesity - Partner Toolkit |
| Health Screening | <ul style="list-style-type: none"> • Help Us Help You - Lung Cancer Symptoms • Stephen Fry joins NHS campaign urging people to come forward for cancer checks • Help Us Help You - Abdominal and Urological Symptoms of Cancer |
| PHE | <ul style="list-style-type: none"> • Knowledge & Library Services • Campaign Resources • Public Health Profiles • Health Publications • Public health specialist capacity • Apprenticeships that support public health careers |
| NHS Health Check | • NHS Health Check |
| NOIDS | • Notifications of infectious diseases (NOIDs) |
| Addiction/Smoking | |

Immunisation / Travel Health

- [Vaccinations and infections](#)
- [Joint Committee on Vaccination and Immunisation](#)
- [Immunisation against infectious disease](#)
- [West Midlands Immunisation Service](#)
- [Immunisation information for Health Care Services within the West Midlands area](#)

| | |
|----------------|---|
| Flu | <ul style="list-style-type: none"> • Flu and flu vaccinations |
| Children | <ul style="list-style-type: none"> • Ensuring every child gets the best start in life – starting with vaccine protection |
| Adults | <ul style="list-style-type: none"> • Immunisation patient group direction (PGD) templates Shingles immunisation programme: introduction of Shingrix® letter • Pertussis vaccination programme for pregnant women update: Vaccine coverage in England, April to June 2021 |
| Vaccine Update | <ul style="list-style-type: none"> • Vaccine update |
| Travel Health | <ul style="list-style-type: none"> • Travel Health Pro • Fit for Travel • Travel Health • Jane Chiodini |
| Covid Vaccine | <ul style="list-style-type: none"> • JCVI Advises Third COVID Jab for Severely Immunosuppressed Over-12s • UKHSA launches study to better understand COVID-19 vaccine response • COVID-19 vaccine surveillance reports • Five reasons to get the COVID-19 vaccine if you're pregnant • Who can get vaccinated? • Covid-19 Vaccine Toolkit • Health and Social Care Workers Winter Vaccinations 2021 • Helping others NHS App guide • Half of all 16 and 17-year-olds receive life-saving COVID vaccine • New study to test third COVID-19 vaccine for people with weakened immune systems • JCVI issues advice on third dose vaccination for severely immunosuppressed |

| Family Planning & Sexual Health | |
|--|---|
| Family Planning | |
| Reproductive | <ul style="list-style-type: none"> • Tommys • Life-saving world-first NHS test for pregnant women |
| Sexual Health | |
| Mental Health / Learning Disability / Disability | |
| Mental Health | <ul style="list-style-type: none"> • Mental Health • Mental Health UK • Mind • Place2b • Rethink Mental Illness • Young Minds • Free Members' Webinar: The mental health digital playbook webinar • Covid-19 Loneliness Fund • Research report August 2021 Untapped? Understanding the mental health clinical support workforce • Severe mental illness (SMI) profile: August 2021 update • Reaching the tipping point • Veterans' mental health services to receive £2.7 million boost • Communications toolkit Op COURAGE: The Veteran Mental Health and Wellbeing Service • Consensus statement for information sharing and suicide prevention |
| Learning Disability | <ul style="list-style-type: none"> • Learning Disabilities • Learning Disability England • Mencap • Bild • Autism • Learning disability newsletter: Issue 13 |
| Disability | <ul style="list-style-type: none"> • Disability Rights UK • Disability Matters |

From Cradle to...

| | |
|-------------------|--|
| Infant Health | <ul style="list-style-type: none"> • Tommys • First Steps Nutrition Trust • Bliss • Best start in life and beyond Improving public health outcomes for children, young people and families |
| Child Health | <ul style="list-style-type: none"> • Unicef • Health Professional Academy • Premature Babies • Child and Maternal Health • Women and Child First • Child Health Information Services • Place2b • Childhood eczema • Gastro-oesophageal reflux disease (GORD) in infancy • CAMHS Information • The health effects of universal early childhood interventions: evidence from Sure Start • Lifesaving hepatitis C treatment for children on the NHS • Positive healthcare experience for babies, children and young people essential to their wellbeing • RSV Toolkit • |
| Adolescent Health | <ul style="list-style-type: none"> • Adolescent Health Programme • Society for Adolescent Health and Medicine • Young Minds • Schools asked to support survey on Smoking Drinking and Drug Use among young people in England |
| Mens Health | |

| | |
|------------------------------------|--|
| Women's Health | <ul style="list-style-type: none">• Well Spring• HRT and menopause in the 21st century |
| Trans / Non-binary Health / LGBTQ+ | <ul style="list-style-type: none">• Pride in the NHS Week and NHS Virtual Pride |
| Veterans Health | <ul style="list-style-type: none">• The first call for help takes courage• Communications toolkit Op COURAGE: The Veteran Mental Health and Wellbeing Service |
| The Older Population | <ul style="list-style-type: none">• BGS |
| Carers | <ul style="list-style-type: none">• Skills For Care• Adult Social Care Update |
| Complex Needs | |

Care of Patients with Long Term Conditions

| Care of Patients with Long Term Conditions | |
|--|---|
| LTC | |
| Diabetes & Pre-Diabetes | <ul style="list-style-type: none"> • AZ Medical and Educational Goods and Services in Diabetes • Mumoactive • The mySugr App • Diabetes Toolkit • NHS to diagnose thousands of people with rare diabetes • T2Discussions: Trending Topics |
| Respiratory | <ul style="list-style-type: none"> • Spirometry: step by step • ARTP • British Lung Foundation • The Primary Care Respiratory Society • Tuberculosis in England: quarterly reports • Post-American Thoracic Society (ATS) Congress update 2021 • National flu and COVID-19 surveillance reports: 2021 to 2022 season • The use and regulation of pulse oximeters (information for healthcare professionals) |
| COPD | <ul style="list-style-type: none"> • Right Breathe |
| Asthma | <ul style="list-style-type: none"> • FeNO - Fractional exhaled nitric oxide - for the diagnosis and management of Asthma • Asthma UK • Asthma: diagnosis, monitoring and chronic asthma management • GINA 2021: the missing pieces in the childhood asthma puzzle • GINA: Interim Guidance About COVID-19 & Asthma • Diagnosis and management: Asthma • Short-Acting Beta Agonist Overuse 'a Global Public Health Issue' |

Continuation of Long Term Conditions

| | |
|------------------------|--|
| Hypertension | <ul style="list-style-type: none"> • British Heart Foundation • Blood Pressure UK • Hypertension in adults: diagnosis and management • Hypertension in adults: diagnosis and treatment • Irbesartan batches recalled over contamination • Know Your Numbers! Week 2021 • Self-Monitoring of Blood Pressure in Hypertension: A UK Primary Care Survey |
| CVD/AF | <ul style="list-style-type: none"> • QRISK®3-2018 risk calculator • Charity warns heart surgery waiting times could rise more than 40% by next spring without new funding • Heart Rhythm Alliance • CVD risk assessment and management • Health matters: preventing cardiovascular disease • Inflammation and Heart Disease • NICE to approve 'game changer' twice-yearly cholesterol-lowering injection • NHS England to routinely offer novel cholesterol-lowering jab |
| Heart Failure | <ul style="list-style-type: none"> • British Heart Foundation |
| Cancer / Oncology | <ul style="list-style-type: none"> • Surviving Thyroid Cancer • Help Us Help You - Lung Cancer Symptoms • Becca Breast Cancer Support App • Breast Cancer Now • MoleCare App • Help Us Help You - Abdominal and Urological Symptoms of Cancer • Conflicting relationship between obesity and cancer risk |
| Chronic Kidney Disease | <ul style="list-style-type: none"> • Atypical haemolytic uraemic syndrome (HUS) |

Continuation of Long Term Conditions

| | |
|----------------------------|---|
| Liver Disease | <ul style="list-style-type: none"> • British Liver Trust |
| Neurological Conditions | <ul style="list-style-type: none"> • The Brain Tumour Charity |
| Musculoskeletal Conditions | <ul style="list-style-type: none"> • Rheumatology • National Axial Spondyloarthritis Society • Hip OA: What's the Best First Option? |
| Blood Disorders | <ul style="list-style-type: none"> • Blood Cancer • Thalassaemia • ITP • Haemophilia • UK MDS Forum • Save a life. Give plasma. • Diagnosis and management of pernicious anaemia • PERNICIOUS ANAEMIA SOCIETY |
| G.I | <ul style="list-style-type: none"> • Gastro-oesophageal reflux disease (GORD) in infancy |
| ENT | |
| G.U | <ul style="list-style-type: none"> • Help Us Help You - Abdominal and Urological Symptoms of Cancer |

Continuation of Long Term Conditions

| | |
|--|--|
| <p>Endocrine Disorders / Metabolic Disorders</p> | <ul style="list-style-type: none"> • Endocrinology • Turner Syndrome Support Society • Thyroid Eye Disease • British Thyroid Foundation • Thyroid UK • Pituitary • Addisons Disease • Parathyroid UK • The Royal Osteoporosis Society • Metabolic Support UK • Diagnosing and managing Addison's disease in primary care • Conn's syndrome |
| <p>Frailty</p> | <ul style="list-style-type: none"> • Recognising frailty • Identifying frailty • CLINICAL FRAILITY SCALE |
| <p>Dementia</p> | <ul style="list-style-type: none"> • Dementia UK • Understanding dementia • Artificial intelligence brain scan trial will help clinicians diagnose dementia in a day • Dementia profile updates |

Continuation of Long Term Conditions

Dermatology

- [British Association of Dermatologists](#)
- [Eczema](#)
- [The British Skin Foundation](#)
- [Acne vulgaris: management](#)
- [The Primary Care Dermatology Society](#)
- [Acne.org](#)
- [Allergy UK](#)
- [Urticaria](#)
- [Hives](#)
- [Sunburn](#)
- [Causes of cancer and reducing your risk](#)
- [What is Rosacea?](#)
- [Rosecea](#)
- [Herpes.org](#)
- [Shingles](#)
- [Fungal Skin Infection - Foot](#)
- [The Psoriasis Association](#)
- [Psoriasis](#)
- [Melanoma](#)
- [Skin Health Information](#)
- [British Association of Plastic Reconstructive and Aesthetic Surgeons](#)
- [Warts and verrucae](#)

Continuation of Long Term Conditions

| | |
|--|---|
| Allergy / Auto-immune / Genetic Conditions | <ul style="list-style-type: none"> • Allergy UK • Rheumatology • Addisons Disease • Cystinosis diagnosis and co-ordination of management |
| Obesity | <ul style="list-style-type: none"> • Obesity UK • Adult Obesity - Partner Toolkit • Conflicting relationship between obesity and cancer risk |
| Pain Management | <ul style="list-style-type: none"> • Pain Concern |
| Multi-Morbidity | <ul style="list-style-type: none"> • Multimorbidity • Multimorbidity / multiple long-term conditions (MLTC) |
| Minor Illness / First Contact | <ul style="list-style-type: none"> • NHS 111 Online - August 2021 Resources |
| Assessment | |
| Other | <ul style="list-style-type: none"> • Ultra Rare Disease Disorders And Disabilities Foundation • Atlas of Variation • Delayed diagnosis of bowel cancer • Remote consultations and delayed diagnosis • Complaint from the family of a deceased patient • Assessing capacity for COVID vaccine • Patient's refusal to wear a face mask |

| End of Life Care | |
|------------------|---|
| End of Life Care | |
| Covid-19 | |
| Covid-19 | <ul style="list-style-type: none"> • Covid Live • Coronavirus Statistics • A reckoning: the continuing cost of COVID-19 • When to self-isolate and what to do • Larger Risk of Hospitalisation With COVID-19 Delta Variant, Study Suggests • Access to general practice communications toolkit – Midlands • Patients admitted to hospital • COVID-19 admission risk tools should include multiethnic age structures, multimorbidity and deprivation metrics for air pollution, household overcrowding, housing quality and adult skills • Campaign resources • What parents and carers need to know about early years providers, schools and colleges during COVID-19 • COVID-19 Schools Infection Survey, England: Round 6, June 2021 |
| Long Covid | <ul style="list-style-type: none"> • Supporting your recovery after COVID-19 • Nursing in Practice Long Covid Special • Information to Support Your Covid Recovery • Your COVID recovery – Social Pack |

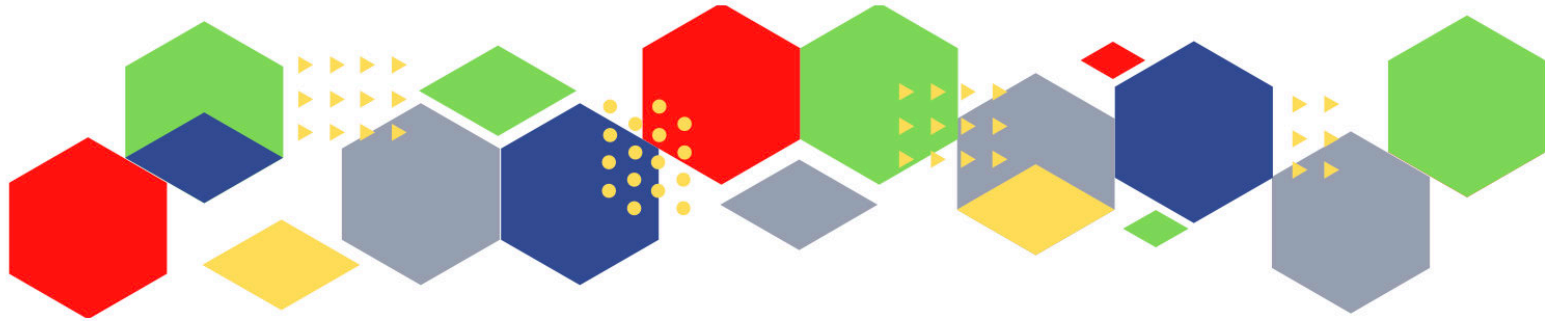
| News & Views | |
|--|---|
| Digital News / Remote Consultations | <ul style="list-style-type: none"> • Digital Health News Webinars • Digital Health News • The Digital Health Autumn Leadership Summit • COVID-19 and the digital divide |
| PSNC News | <ul style="list-style-type: none"> • 3rd September • 7th September |
| 60 Second GP / Pulse / GP Online / HSJ | <ul style="list-style-type: none"> • 60 Second GP • GP Online • HSJ • Pulse Today |
| Primary Care Update / PCC | <ul style="list-style-type: none"> • Primary Care Bulletin |
| Kings Fund | Weekly News / Health Management and Policy Alert / Health and Well Being Bulletin / Digital Health Digest / Events Update |
| World Health Organisation | <ul style="list-style-type: none"> • WHO |
| Midlands Academic Health Science Network | |
| Healthwatch | <ul style="list-style-type: none"> • Healthwatch |
| Black Country Bulletins | |

Continuation News & Views

| | |
|---|---|
| IHCT / CCG / STP / Healthier Futures | <ul style="list-style-type: none"> • Healthier Futures • Black Country & West Birmingham CCG • Dudley Integrated Health and Care |
| University / Student Nurses | |
| Medisa / Univadis / Geeky Medics / GP Notebook / Medscape | <ul style="list-style-type: none"> • Univadis Newsletter • Univadis Nurses Headlines • Medisa • Geeky Medics • Medscape Nurses |
| MIMS | <ul style="list-style-type: none"> • Latest MIMS news |
| The Health Foundation | <ul style="list-style-type: none"> • The Health Foundation |
| The Health Care Leaders Update | <ul style="list-style-type: none"> • Health Care Leader News |
| PHE | |
| Innovation Agency | <ul style="list-style-type: none"> • Innovation Agency Exchange |
| RCN | <ul style="list-style-type: none"> • RCN+ • RCN Events • RCN • RCN Congress 2021 to be held exclusively online • A reckoning: the continuing cost of COVID-19 • Transforming the RCN: an independent review into the organisational culture of the RCN • RCN Magazines • What next for NHS pay • RCN launches new phone lines to support members affected by sexual harassment • RCN Nursing Awards |

| <i>Continuation News & Views</i> | |
|--|---|
| Nursing in Practice / Nursing Standard / Independent Nurse | <ul style="list-style-type: none"> • Nursing in Practice Clinical • Nursing in Practice Bulletin • Practice Nursing Newsletter • Independent News • GPN Bulletin |
| QNI | <ul style="list-style-type: none"> • QNI • QNI Annual Conference 2021 • Applications are open for the NGS Elsie Wagg (Innovation) Scholarship Programme |
| NMC | <ul style="list-style-type: none"> • NMC |
| CNO | <ul style="list-style-type: none"> • Message from the Chief Medical Officer |
| Nice | <ul style="list-style-type: none"> • NICE • NICE News August • Venous thromboembolism in adults |
| RCGP / BMA / The Lancet | <ul style="list-style-type: none"> • The Lancet • British Medical Journal • Royal College of General Practitioners • QOF QI hub • Sexism in medicine • BMA Update |
| Midlands Academic Health Science Network | <ul style="list-style-type: none"> • WMAHSN Network • Wessex Academic Health Science Network Funding Newsletter • August News Update |

| Free Training / Webinars / Meetings / CPD | |
|---|--|
| Development / Information and Knowledge | <ul style="list-style-type: none"> • RCN Events - West Midlands • MIMS Learning Live • THE BEST PRACTICE SHOW – 13-14 October 2021 • FREE Cancer Screening Webinar • Wound Expo • QOF QI - implementation of the 'early cancer diagnosis' module • Continual Professional Development • Virtual Conference 2021 • Inaugural Broadcasts 2021 |
| Area Bulletins | <ul style="list-style-type: none"> • Dudley • Sandwell • Wolverhampton |
| BCWB Training Hub | <ul style="list-style-type: none"> • Black Country and West Birmingham Training Hub |
| Research | <ul style="list-style-type: none"> • Science Daily • UK Research and Innovation |
| Freebies | <ul style="list-style-type: none"> • Blue Light Card |



Thank you for reading Future Proof Health's weekly news!
If you missed past issues, please click [here](#) to view them

More information can be found on our website, [here](#)

Don't forget to like us on [Facebook](#) & Follow us on [Twitter](#)

