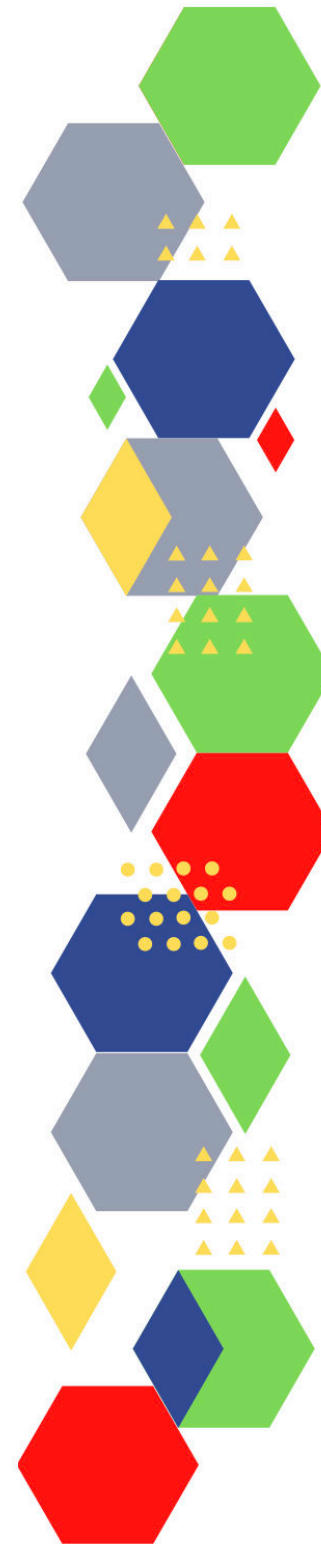


Future Proof Health Presents

Weekly News

28th October 2021



Communication	
Communication with Patients	
Communication within Teams	
Consent	<ul style="list-style-type: none"> • Gillick competency and Fraser guidelines • CONSENT POLICY • ReSPECT for healthcare professionals
People and Personal Development	
Personal / HR & People Development / Leadership	<ul style="list-style-type: none"> • Accountability and delegation in practice • Looking after your career
Health, Safety & Security	
	<ul style="list-style-type: none"> • NPSA • Control of Substances Hazardous to Health (COSHH) • HSE Weekly Bulletin
Gov UK - Health Security	<ul style="list-style-type: none"> • UK Health Security Agency: Addressing the impact of health threats on the nation
CQC	<ul style="list-style-type: none"> • GP mythbusters • Examples of outstanding practice for GPs • CQC update for adult social care providers • An update on how we're implementing our new strategy • State of Care
Vaccines / Medications / Prescribing	<ul style="list-style-type: none"> • Protocol for ordering, storing and handling vaccines • A Competency Framework for all Prescribers • Non-medical prescribing • The Human Medicines Regulations 2012 • RCN - Non-medical prescribers • Royal Pharmaceutical Society • Standards for prescribing • Clinical Negligence Scheme for General Practice • Specialist Pharmacy Service - Guidance • DAPB4013: Medicine and Allergy/Intolerance Data Transfer

Drug / Device Alerts (MHRA)	<ul style="list-style-type: none"> • Launching BIA-MHRA Joint Conference 2021: Register today - 8th December 2021 • Drug Safety Update
Antibiotic steward-ship / Anti-microbial resistance	<ul style="list-style-type: none"> • Antibiotic awareness: toolkit for healthcare professionals in England
Emergency Situations	<ul style="list-style-type: none"> • The updated National Early Warning Score and its use with suspected Sepsis • Resuscitation Council UK
Infection Control / Infection Statics	
Safe Guarding	<ul style="list-style-type: none"> • Female genital mutilation (FGM) • PREVENT • Child protection system in the UK • Safeguarding Adults • Safeguarding children: detailed information
Practice Policies	
Audit	
Information Governance	<ul style="list-style-type: none"> • Guide to Data Protection • Supporting general practice – Medical record keeping
Quality & Service Improvement	
Quality, Service & Improvement	<ul style="list-style-type: none"> • The PRSB • General Practice Assessment Questionnaire (GPAQ) • Healthwatch • NHS Five Year Forward View • General Practice Forward View • NMC • Dr Jon Griffiths • NHS Confed • Proactive Care Bulletin • 40 community diagnostic centres launching across England • Our plan for improving access for patients and supporting general practice • NHS COVID Pass winter 2021 campaign • Myth-busting: GP referrals to the NHS Community Pharmacist Consultation Service (CPCS) (England) • NHS System Oversight Framework 2021/22

New Roles in General Practice	<ul style="list-style-type: none"> • Standards for nursing associates • GP mythbuster 57: Health Care Assistants in General Practice
Revalidation	
Personal Practice & Development	
Practice Management	<ul style="list-style-type: none"> • Institute of General Practice Management • Practice Index
NHS Self Care & Resilience	<ul style="list-style-type: none"> • Samaritans • Mental Health at work • Calm • Supporting our NHS people
ICS / PCN	<ul style="list-style-type: none"> • BUILDING FRONTIERS
Leadership	<ul style="list-style-type: none"> • Leadership Academy
Personalised Care	
Personalised Care / Self Care / Social Prescribing / Health Coaching	<ul style="list-style-type: none"> • Self Care forum • Personalised Care Institute • Personalised care • Social Prescribing Academy • Having safe and effective wellbeing conversations
Group consultation	
Working Differently	

Equality & Diversity	
Equality & Diversity	<ul style="list-style-type: none"> • Public Health Profiles • Equality, diversity and inclusion training
Inclusion Health	<ul style="list-style-type: none"> • Health Creation Academic Network
Poverty / Homelessness	<ul style="list-style-type: none"> • Crisis
Thrive Into Work	<ul style="list-style-type: none"> • Thrive into Work • Thrive into Work Referral form
Health Inequalities	<ul style="list-style-type: none"> • Reducing health inequalities in your local area: a toolkit for clinicians
Health & Well-Being	
Health & Well-Being	
Assessment	
Obtaining samples	<ul style="list-style-type: none"> • Lab Tests Online
QOF/PHOF/DES/LES	
Role Specific	
Cervical Cytology	<ul style="list-style-type: none"> • Guide to the interim assessment • British Association for Cytopathology • Lab Tests Online
Ear Care	<ul style="list-style-type: none"> • Ear Care Centre • RNID
Wound Management	<ul style="list-style-type: none"> • Microworld • Tissue Viability Society • Best Practice, Leadership, Support • Wounds Week - 6th-10th December
Minor Surgery	<ul style="list-style-type: none"> • Supporting general practice – Consent

Management of Emergency Situations	
Management of Emergency Situations	<ul style="list-style-type: none"> • The updated National Early Warning Score and its use with suspected Sepsis • Surviving cardiac arrest: how the GoodSAM app is helping NHS ambulance services to save lives
111	
Red Flags	<ul style="list-style-type: none"> • Supporting general practice – Common pitfalls
Sepsis	<ul style="list-style-type: none"> • Sepsis: recognition, diagnosis and early management • Sepsis guidance implementation advice for adults • Sepsis in Children • Sepsis Trust • RCGP: Sepsis • World Sepsis Day 2021- HEE launches new Sepsis Awareness Resource video
Therapeutic Monitoring	
Health Promotion / Health Screening	
Health Promotion / Population Health	<ul style="list-style-type: none"> • Better Health • EXi App
Health Screening	<ul style="list-style-type: none"> • PHE Screening
PHE/OHID	<ul style="list-style-type: none"> • Knowledge & Library Services • Campaign Resources • Public Health Profiles • Health Publications • Health Profile for England 2021
NHS Health Check	<ul style="list-style-type: none"> • NHS Health Check
NOIDS / PHE Surveillance / Syndromic Surveillance	<ul style="list-style-type: none"> • Notifications of infectious diseases (NOIDs) • Syndromic surveillance: systems and analyses
Addiction/Smoking	<ul style="list-style-type: none"> • Drink Coach • Stop smoking interventions and services

Immunisation / Travel Health

- [Vaccinations and infections](#)
- [Joint Committee on Vaccination and Immunisation](#)
- [Immunisation against infectious disease](#)
- [West Midlands Immunisation Service](#)
- [Immunisation information for Health Care Services within the West Midlands area](#)
- [Vaccination of individuals with uncertain or incomplete immunisation status](#)
- [WHO vaccine-preventable diseases: monitoring system. 2020 global summary](#)
- [The Foundations of Immunization: What, Who, When and Why?](#)
- [Winter Vaccination - Prime phase: Social Media content calendar and assets - 2021](#)

Flu

- [Flu and flu vaccinations](#)
- [The national influenza immunisation programme 2021 to 2022](#)
- [Flu vaccines for the 2021 to 2022 season poster](#)
- [Appendix C: Flu vaccinator competency assessment tool](#)
- [Healthcare assistants and flu vaccinations](#)
- [Flu Campaign Resources 2021/22](#)
- [Updates to the Flu Immunisation elearning programme for the 2021/22 flu season](#)
- [Flu Immunisation programme - elearning](#)
- [Foundation elearning programme update September 2021](#)
- [Accessing government-secured flu vaccines: guidance for primary care 2021 to 2022](#)

Continuation of Immunisation / Travel Health

Covid Vaccine	<ul style="list-style-type: none"> • Greenbook COVID-19 chapter 14a • Key questions on the children and young people's COVID-19 vaccination programme • COVID-19 vaccinations received overseas • New film launched urging public to get flu and COVID-19 vaccines • A joint letter to parents of secondary school and college students in England on Covid-19 testing and vaccines from the Secretaries of State for Education and for Health and Social Care • Updates made to the COVID-19 vaccination elearning programme • HEE e-LfH COVID-19 vaccination programme launches hit 2 million • COVID-19 Vaccine Moderna e-learning now available • COVID-19 vaccination deployment next steps for 12 to 15-year-old vaccination
Children	<ul style="list-style-type: none"> • COVID-19: impact on childhood vaccinations: data to August 2021
Adults	<ul style="list-style-type: none"> • Immunisation patient group direction (PGD) templates • Shingles immunisation programme: introduction of Shingrix® letter
Vaccine Update	<ul style="list-style-type: none"> • Vaccine update • Vaccine Update Index
PGD	
Travel Health	<ul style="list-style-type: none"> • Travel Health Pro • Fit for Travel • Travel Health • Jane Chiodini • Corona.Help

Mental Health / Learning Disability / Disability	
Mental Health	<ul style="list-style-type: none">• Mental Health• Mental Health UK• Mind• Place2b• Rethink Mental Illness• Young Minds• Every Mind Matters• Calm• Headspace• We Can Talk• Get Your Mind Plan• Feeling low?• Better Health - Every Mind Matters - Resources• ZSA Training
Learning Disability	<ul style="list-style-type: none">• Learning Disabilities• Learning Disability England• Mencap• Bild• Autism• Learning Disability Practice Webinar 2021 - 3rd November
Disability	<ul style="list-style-type: none">• Disability Rights UK• Disability Matters

From Cradle to...

<p>Infant Health</p>	<ul style="list-style-type: none"> • Tommys • First Steps Nutrition Trust • Bliss • NHS App - Baby Buddy • NHS App - Peanut • ICON Toolkit
<p>Child Health</p>	<ul style="list-style-type: none"> • Unicef • Health Professional Academy • Premature Babies • Child and Maternal Health • Women and Child First • Child Health Information Services • Place2b • Childhood eczema • Childhood asthma • Childrens Commissioner - The Big Answer • Suicide in Children and Young People
<p>Adolescent Health</p>	<ul style="list-style-type: none"> • Adolescent Health Programme • Society for Adolescent Health and Medicine • Young Minds
<p>Mens Health</p>	<ul style="list-style-type: none"> • Mens Health Forum • Mens Health Month • Mens health.org • Mens Health UK • Men and mental health • Men's Mental Health Awareness • Prostate Cancer UK • Orchid Fighting Male Cancer • Prostate Cancer UK Facebook Page • Male Urology Learning Month 2021 - November • Prostate cancer care - Building on change: Lessons learned during the pandemic

Women's Health	<ul style="list-style-type: none"> • Womens Health Concern • Well Being of Women • Coppa Feel • Menopause Matters • The Menopause Charity • Royal College of Obstetricians and Gynaecologists - Guidelines • Pelvic Partnership • CRUK - Womens Cancer • Breast Cancer Now • Foundation for Women's Cancer • Eve Appeal • Ovarian.Org • Jo's Trust • Well Spring
Trans / Non-binary Health / LGBTQ+	<ul style="list-style-type: none"> • LGBT Foundation • NHS population screening: information for trans and non-binary people • Cervical screening for trans men and/or non-binary people
Veterans Health	<ul style="list-style-type: none"> • The first call for help takes courage
Traveller / Gypsy Health	
The Older Population	<ul style="list-style-type: none"> • BGS • Ageing Better
Carers	<ul style="list-style-type: none"> • The Care Provider Alliance • Skills for Care • The Care Workers' Charity • Supporting Adult Carers • Adult Social Care Update • CQC - State of Care
Complex Needs	

Family Planning & Sexual Health	
Family Planning	<ul style="list-style-type: none"> • Faculty of Sexual and Reproductive Healthcare Education and Training
Reproductive	<ul style="list-style-type: none"> • Tommys
Sexual Health	<ul style="list-style-type: none"> • Sexual and Reproductive Health Profiles • FSRH Education & Training
Maternity / Neonate health	<ul style="list-style-type: none"> • Impact of SARS-CoV-2 variant on the severity of maternal infection and perinatal outcomes: Data from the UK Obstetric Surveillance System national cohort. • Covid-19 vaccines and fertility
Care of Patients with Long Term Conditions	
LTC	<ul style="list-style-type: none"> • Chronic Conditions On Demand
Diabetes & Pre-Diabetes	<ul style="list-style-type: none"> • AZ Medical and Educational Goods and Services in Diabetes • Mumoactive • The mySugr App • Foot Check • Diabetes resources for healthcare professionals • PCDS Question Time – COVID-19 backlog and beyond - 4th November • COVID-19 and type 2 diabetes in adults: Assessing ongoing learnings and examining where our focus should be moving forward - 3rd November
Respiratory	<ul style="list-style-type: none"> • Spirometry: step by step • ARTP • British Lung Foundation • The Primary Care Respiratory Society • Respiratory Syncytial Virus (RSV) comms toolkit
COPD	<ul style="list-style-type: none"> • Right Breathe • Meeting the Challenge: Addressing the mortality risk in patients with COPD and Cardiovascular disease

Continuation of Long Term Conditions

Asthma	<ul style="list-style-type: none"> • FeNO - Fractional exhaled nitric oxide - for the diagnosis and management of Asthma • Asthma UK • Asthma: diagnosis, monitoring and chronic asthma management • GINA 2021: the missing pieces in the childhood asthma puzzle • GINA: Interim Guidance About COVID-19 & Asthma
Hypertension	<ul style="list-style-type: none"> • British Heart Foundation • Blood Pressure UK • Hypertension in adults: diagnosis and management • Hypertension in adults: diagnosis and treatment
CVD/AF	<ul style="list-style-type: none"> • QRISK®3-2018 risk calculator • Heart Rhythm Alliance • CVD risk assessment and management • Health matters: preventing cardiovascular disease • NICE impact cardiovascular disease prevention • Cholesterol Now
Heart Failure	<ul style="list-style-type: none"> • British Heat Foundation • British Society Guidelines
Cancer / Oncology	<ul style="list-style-type: none"> • Surviving Thyroid Cancer • Help Us Help You - Lung Cancer Symptoms • Becca Breast Cancer Support App • Breast Cancer Now • MoleCare App • Macmillian • The Changing Story of Cancer programme • Risk of cancer: what role for non-specific markers in primary care? • Should we be screening for ovarian cancer? Results from the UKCTOCS
Chronic Kidney Disease	<ul style="list-style-type: none"> • Kidney.Org • Kidney Quality Improvement Partnership

Continuation of Long Term Conditions

Liver Disease	<ul style="list-style-type: none"> • British Liver Trust • Liver Research • BRITISH ASSOCIATION FOR THE STUDY OF THE LIVER • LIVERnORTH • LIVER DISEASE AND CIRRHOSIS
Blood Disorders	<ul style="list-style-type: none"> • Blood Cancer • Thalassaemia • ITP • Haemophilia • UK MDS Forum • Save a life. Give plasma. • Diagnosis and management of pernicious anaemia
G.I	<ul style="list-style-type: none"> • GIST Cancer UK
ENT	
G.U	
Neurological Conditions	<ul style="list-style-type: none"> • The Brain Tumour Charity • Narcolepsy.Org • ACNR
Musculoskeletal Conditions	<ul style="list-style-type: none"> • Rheumatology • National Axial Spondyloarthritis Society • Musculoskeletal health • Musculoskeletal health: 5 year prevention strategic framework • Faculty of Occupational Medicine

Continuation of Long Term Conditions

Endocrine Disorders / Metabolic Disorders	<ul style="list-style-type: none">• Endocrinology• Turner Syndrome Support Society• Thyroid Eye Disease• British Thyroid Foundation• Thyroid UK• Pituitary• Addisons Disease• Parathyroid UK• The Royal Osteoporosis Society• Metabolic Support UK
Frailty	<ul style="list-style-type: none">• Recognising frailty• Identifying frailty• CLINICAL FRAILTY SCALE
Dementia	<ul style="list-style-type: none">• Dementia UK• Understanding dementia• My House of Memories - NHS App• Dementia profile updates• Antipsychotics in people living with dementia: NICE KTT7

Continuation of Long Term Conditions

Dermatology	<ul style="list-style-type: none"> • British Association of Dermatologists • Eczema • The British Skin Foundation • Acne vulgaris: management • The Primary Care Dermatology Society • Acne.org • Allergy UK • Urticaria • Hives • Sunburn • Causes of cancer and reducing your risk • What is Rosacea? • Rosecea • Herpes.org • Shingles • Fungal Skin Infection - Foot • The Psoriasis Association • Psoriasis • Melanoma • Skin Health Information • British Association of Plastic Reconstructive and Aesthetic Surgeons • Warts and verrucae
Allergy / Auto-immune / Genetic Conditions	<ul style="list-style-type: none"> • Allergy UK • Rheumatology • Addisons Disease
Obesity	<ul style="list-style-type: none"> • Obesity UK • Once-weekly subcutaneous semaglutide in overweight and obese adults without diabetes

<i>Continuation of Long Term Conditions</i>	
Pain Management	<ul style="list-style-type: none"> • Pain Concern • UK career framework for pain nurses
Genomics	
Multi-Morbidity	<ul style="list-style-type: none"> • Multimorbidity • Multimorbidity / multiple long-term conditions (MLTC)
Minor Illness / First Contact Assessment	
Other	<ul style="list-style-type: none"> • Ultra Rare Disease Disorders And Disabilities Foundation • MyCognition Home - NHS App • Cold weather plan: action cards for cold weather alert service • NICE announces next steps for publication of its guideline on ME/CFS
End of Life Care	
End of Life Care	<ul style="list-style-type: none"> • ReSPECT for healthcare professionals

Covid-19	
Covid-19	<ul style="list-style-type: none"> • Covid Live • Coronavirus Statistics • New elearning session highlights dermatological side effects of COVID-19 • New COVID-19 community contact tracing programme now available • Staff Recovery Resources for critical care and the wider health workforce recovering from the COVID-19 pandemic • MindEd infographic highlights programme's success during COVID-19 • What has been the impact of Covid-19 across the UK countries? • UK government secures groundbreaking COVID-19 antivirals
Long Covid	<ul style="list-style-type: none"> • Supporting your recovery after COVID-19 • Long Covid Toolkit • Long term effects of COVID (Long COVID) • Post-COVID Syndrome (Long COVID) • COVID-19 Yorkshire Rehabilitation Screening Tool • FOM Guidance • Assessing long-term rehabilitation needs in COVID-19 survivors using a telephone screening tool (C19-YRS tool) • Long COVID elearning session available
Covid Response / Recovery	

News & Views	
Digital News / Remote Consultations	<ul style="list-style-type: none"> • Digital Health News Webinars • Digital Health News • NHS Digital
PSNC News	<ul style="list-style-type: none"> • 22nd October • 25th October • 27th October • Concessions Announcement
60 Second GP / Pulse / GP Online / HSJ	<ul style="list-style-type: none"> • 60 Second GP • GP Online • HSJ • Pulse Today
Primary Care Update / PCC / PPP	<ul style="list-style-type: none"> • Primary Care Bulletin • Public Policy Projects News
Practice Index	<ul style="list-style-type: none"> • Practice Index Weekly
Kings Fund	<ul style="list-style-type: none"> • The Kings Fund • Weekly News / Health Management and Policy Alert / Health and Well Being Bulletin / Digital Health Digest / Events Update
World Health Organisation	<ul style="list-style-type: none"> • WHO • OpenWHO
IHCT / CCG / STP / Healthier Futures	<ul style="list-style-type: none"> • Healthier Futures • Black Country & West Birmingham CCG • Dudley Integrated Health and Care • Integrated Care Systems October Update
NHSI / NHSE	
University / Student Nurses	<ul style="list-style-type: none"> • Trust Newsletter

<i>Continuation News & Views</i>	
Medisa / Univadis / Geeky Medics / GP Notebook / Medscape	<ul style="list-style-type: none"> • Univadis Newsletter • Univadis Nurses Headlines • Medisa • Geeky Medics • Medscape Nurses • Clinical Guidelines. Real-World Perspectives. • FAST FIVE QUIZZES
MIMS	<ul style="list-style-type: none"> • Latest MIMS news
The Health Foundation	<ul style="list-style-type: none"> • The Health Foundation • Going green: what do the public think about the NHS and climate change?
The Health Care Leaders Update	<ul style="list-style-type: none"> • Health Care Leader News
Innovation Agency	<ul style="list-style-type: none"> • Innovation Agency Exchange
RCN	<ul style="list-style-type: none"> • RCN • Learning Disability Practice Webinar 2021 - 3rd November • Education Grants • It has never been more important to value our nursing staff
Nursing in Practice / Nursing Standard / Independent Nurse	<ul style="list-style-type: none"> • Nursing in Practice Bulletin • Nursing in Practice Clinical • Nursing in Practice Community Bulletin • GPN Bulletin • Independent Nurse Magazine • Practice Nursing

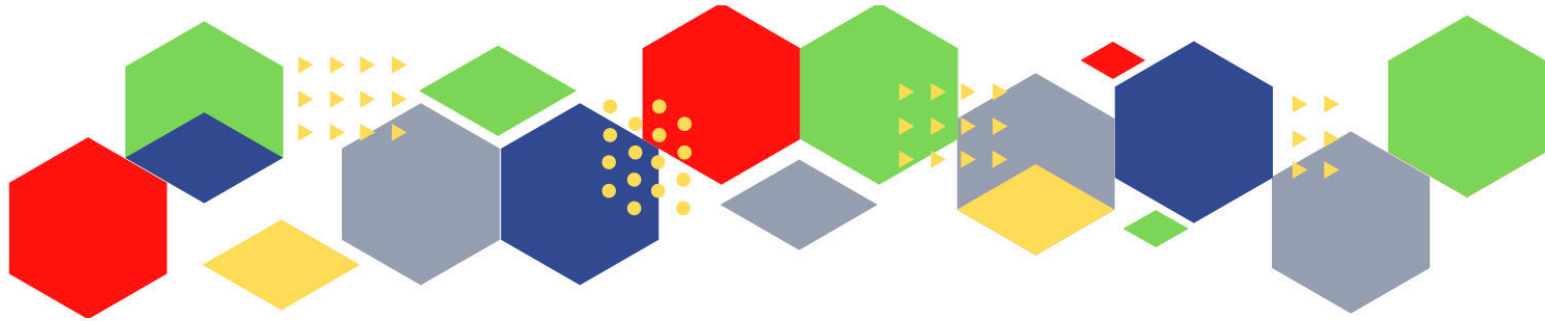
<i>Continuation News & Views</i>	
QNI	• QNI
NMC	• NMC
CMO / CNO	
Nice	<ul style="list-style-type: none"> • NICE • NICE announces next steps for publication of its guideline on ME/CFS
RCGP / BMA / The Lancet	<ul style="list-style-type: none"> • The Lancet • British Medical Journal • Royal College of General Practitioners • QOF QI hub • BMA Update • RCGP News Updates
Midlands Academic Health Science Network	• WMAHSN Network
Healthwatch	• Healthwatch
Other	

Free Training / Webinars / Meetings / CPD

Development / Information and Knowledge	<ul style="list-style-type: none"> • FutureProof Health Training & Events • RCN Events - West Midlands • 16th November - MIMS Learning Live • Inaugural Broadcasts 2021 • 24th March 2022 - RCN Clinical Research Nursing Conference 2022 • Menopause Training • RCGP Learning • Deep Dive on DPP-4 Inhibitors • ISSUES & ANSWERS CONFERENCE SERIES 2021 • Bringing people together to share knowledge - Virtual Conferences • 2nd, 3rd & 4th November - Eye health commissioning (primary care) – an introduction to contract management • ADVANCE CARE PLANNING • IDENTIFYING & MANAGING A DYING PATIENT • 2nd - 4th November - Diabetes uk helping patients get active conference 2021 • 3rd November - COVID-19 and type 2 diabetes in adults • 6th - 10th December - Wounds Week • Primary care virtual conference - 4th November • Monthly RCGP Post-Covid Syndrome (Long Covid) Training Session • Diabetes Professional Care is happening on 10-11 November 2021! • Demand and Capacity Interactive learning series starting 4 November 2021 from 12:00 to 13:30 • FREE eLearning on influenza • A radical new vision for social care - 2nd November
YouTube	<ul style="list-style-type: none"> • NHS England
Blogs/Vlogs	<ul style="list-style-type: none"> • What does the Health and Care Bill mean for NHS staff?
Area Bulletins	
BCWB Training Hub	<ul style="list-style-type: none"> • Black Country and West Birmingham Training Hub

Continuation of Free Training / Webinars / Meetings / CPD

Podcasts	<ul style="list-style-type: none"> • The Nursing Handover Podcast • Nursing Standard Podcasts • What Makes a Nurse? • The MedicsPro Podcast • Nursing Matters • Welcome to the BJN Podcast • Why we care • EBN podcast • This Is Nursing • Maroon Mindset • Teach me, I'm a Nurse • Past Caring • RCGP eLearning podcast • The BMJ Podcast • Primary Care Network podcasts • The Professional Support Unit's Pandemic Podcast • How can public health nurses help deliver the Healthy Child Programme this winter? • Talking GP
Research	<ul style="list-style-type: none"> • Science Daily • Multimorbidity / multiple long-term conditions (MLTC)
Freebies	<ul style="list-style-type: none"> • Blue Light Card
Other	



Thank you for reading Future Proof Health's weekly news!
If you missed past issues, please click [here](#) to view them

More information can be found on our website, [here](#)

Don't forget to like us on [Facebook](#) & Follow us on [Twitter](#)

